

RIVERHOMES

**Riverside Court
Nine Elms SW8**

**£2,878 per month
Unfurnished**



Riverside Court Nine Elms SW8

Set on the second floor of Riverside Court, this one-bedroom apartment offers expansive views across the River Thames and a rare sense of calm within the city. Measuring approximately 720 sq ft (67 sq m), the space unfolds across a series of light-filled interiors, opening onto a private balcony.

A contemporary kitchen and bathroom have been thoughtfully modernised, while the generous bedroom features integrated wardrobe space. The apartment benefits from secure underground parking, an on-site porter, and inclusive heating and hot water.

Riverside Court is central to local amenities, restaurants, cafes and supermarkets and is within a short walk of the shopping centre at Battersea Power Station. The development sits a short walk from Vauxhall National Rail and Underground Station (Victoria Line and National Rail), and Nine Elms Underground (northern line) as well as numerous bus routes allowing easy access around the city, this apartment is exceptionally well located. River boat services are available from neighbouring St George Wharf.

KEY FEATURES

1 double bedroom

1 bathroom

Balcony

Lift access

Ample storage

Onsite porter

Secure underground parking

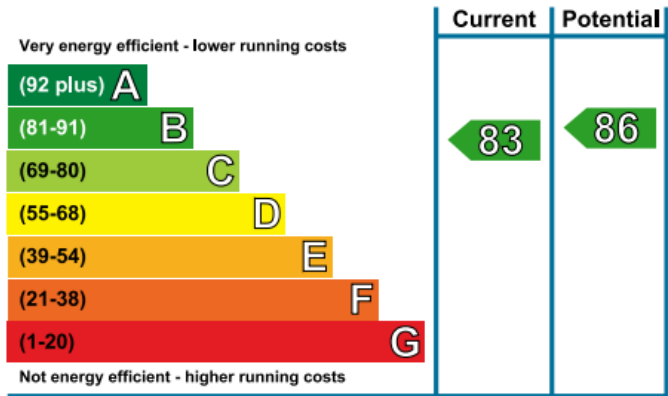
Conveniently located close to restaurants, shops and public transport





ENERGY PERFORMANCE CERTIFICATE

Energy Efficiency Rating



KEY INFORMATION

Local authority: Local Authority of Wandsworth

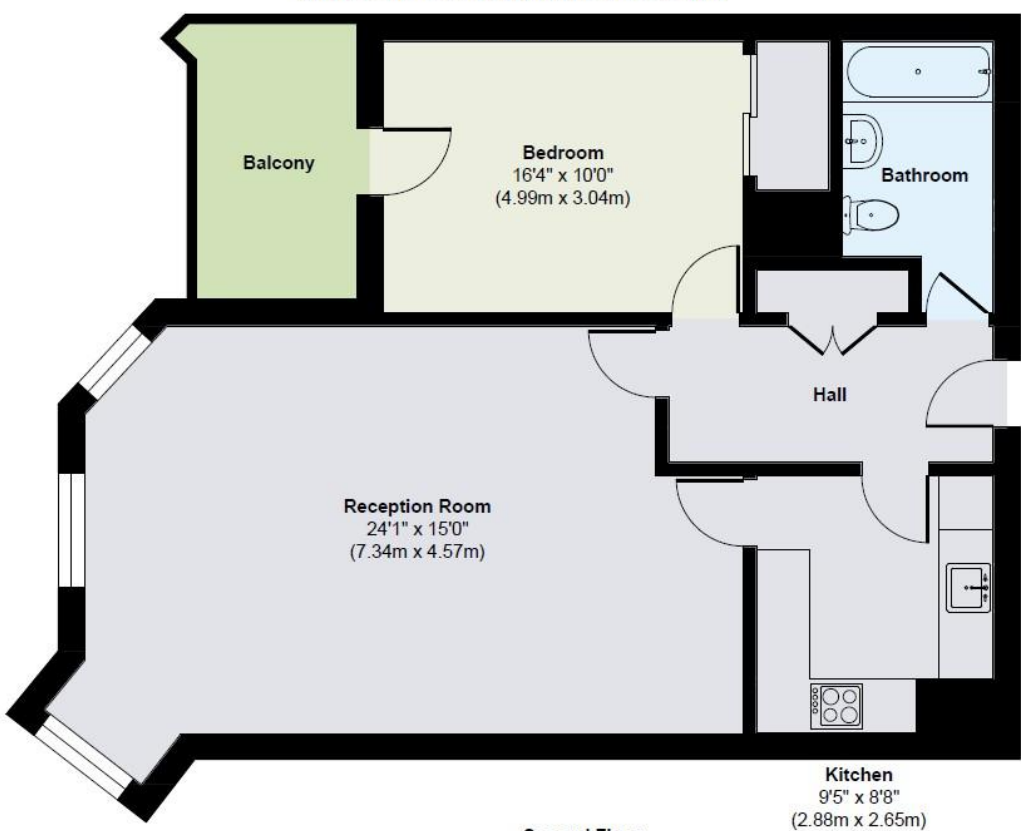
Internal area: 732 sq. ft. / 68 sq. m.

Garden area: Balcony

No. of bedrooms: 1

Council tax: Band E

RIVERSIDE COURT, NINE ELMS SW8



Second Floor

Approx. Gross Internal Floor Area 732 sq. ft / 68.00 sq. m

Illustration for identification purposes only. measurements are approximate, not to scale.