

RIVERHOMES

Trig Lane
City of London EC4V

£3,680 per month
Furnished



Trig Lane City of London EC4V

Set on the north bank of the Thames, just east of Millennium Bridge, this one-bedroom apartment in Norfolk House sits at the water's edge. Floor-to-ceiling windows frame south-facing views towards Tate Modern, Shakespeare's Globe and the curve of the Southbank.

Light moves across the space from morning to evening, reflected off the river below, creating an ever-changing play of light and shadows. From the balcony, you can hear the water lap gently against the banks and the call of birds between the soft hum of passing boats. It's a home for slow mornings with coffee as the sun rises over the Thames, and quiet evenings watching the skyline turn gold as the city lights flicker across the water.

Around 637 sq. ft, the apartment is arranged with calm simplicity. The living space flows onto the balcony, while a separate modern kitchen keeps the room uncluttered. The double bedroom is a peaceful retreat, finished in soft tones with generous storage and views east towards the Shard.

Residents enjoy lift access, a concierge and secure entry within a well-kept riverside setting.

Set directly on the Thames Path, Norfolk House is moments from St Paul's Cathedral, Borough Market and the cultural landmarks of the Southbank. A serene riverside home where London's rhythm meets the flow of the tide.

KEY FEATURES

1 double bedroom apartment

Private balcony

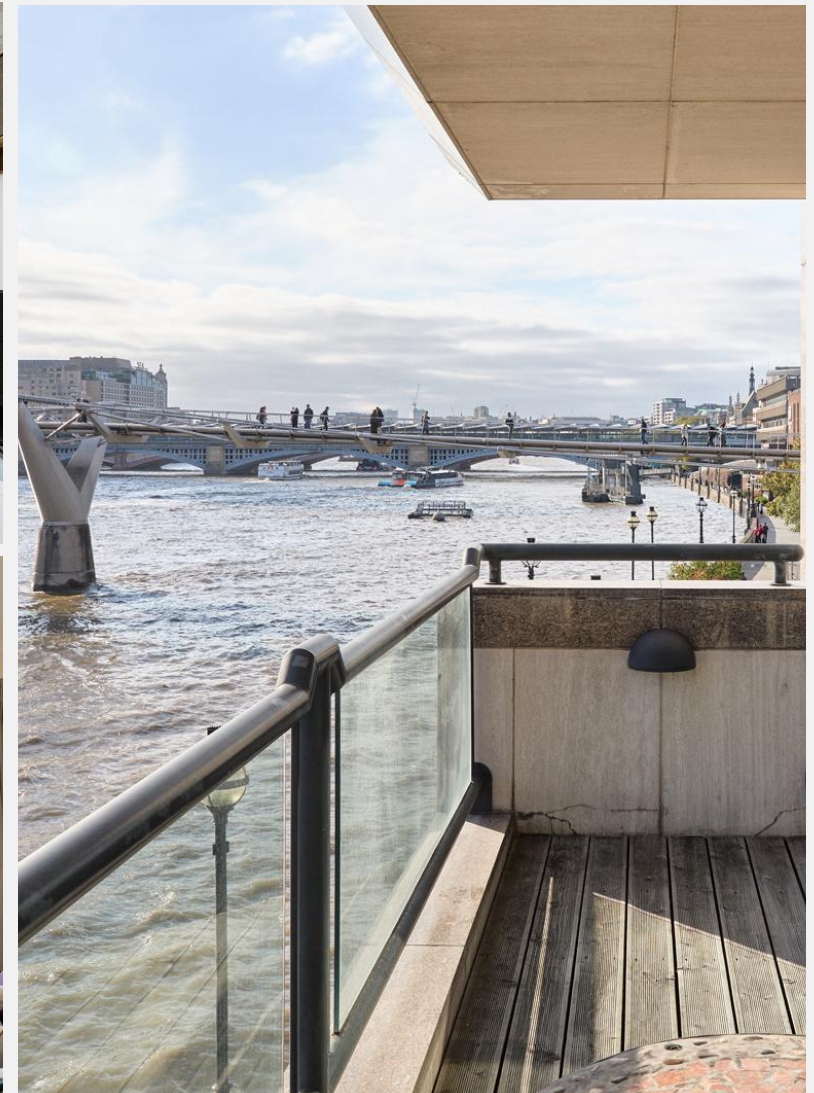
Floor-to-ceiling windows

Separate modern kitchen

Ample storage

Lift access

Conveniently located close to shops, restaurants and public transport





ENERGY PERFORMANCE CERTIFICATE

Score	Energy rating	Current	Potential
92+	A		
81-91	B		
69-80	C	78 C	78 C
55-68	D		
39-54	E		
21-38	F		
1-20	G		

KEY INFORMATION

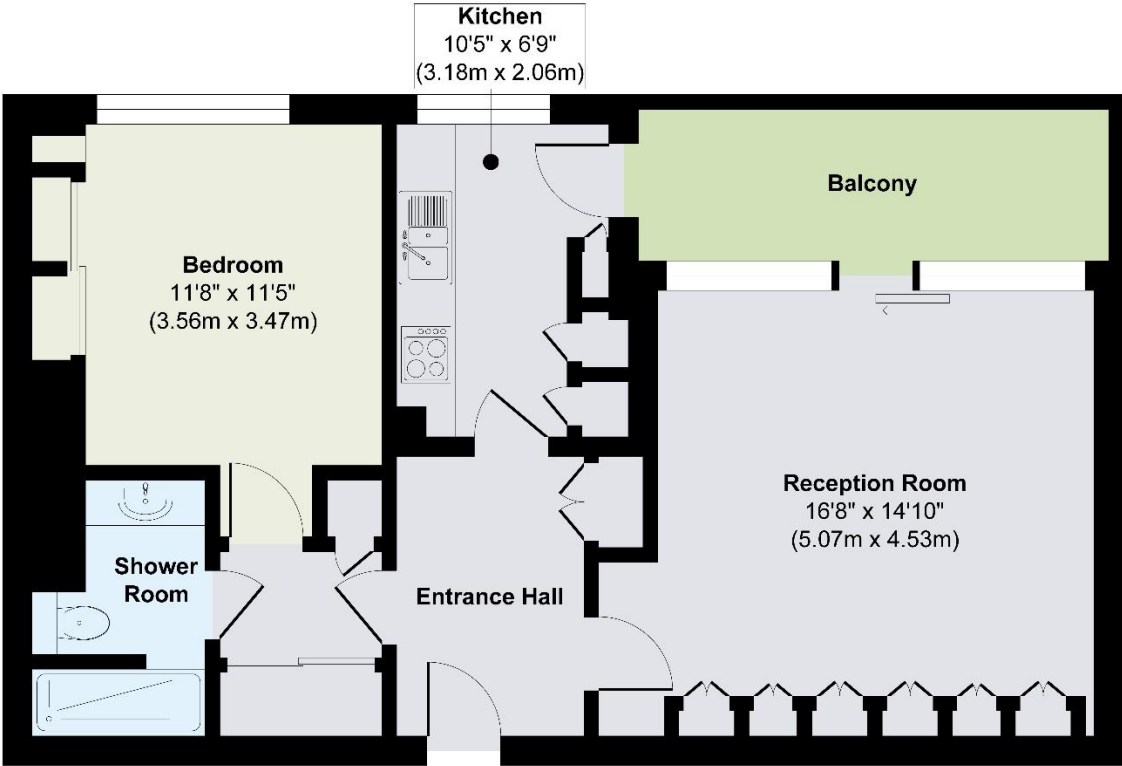
Local authority: City of London

Internal area: 637 sq. ft. / 59.18 sq. m.

Garden area: Balcony

No. of bedrooms: 1

NORFOLK HOUSE, TRIG LANE EC4G



Second Floor

Approx. Gross Internal Floor Area 637 sq. ft / 59.18 sq. m
Illustration for identification purposes only, measurements are approximate, not to scale.