

# RIVERHOMES

Lower Richmond Road  
Putney SW15

£39,500 per year  
Commercial





## Lower Richmond Road Putney SW15

Occupying over 1,500 sq. ft on the banks of the River Thames, this versatile commercial space is situated within a handsome period building on Putney's historic riverfront. Currently arranged as a flexible workspace, the interior lends itself equally well to a variety of uses, including as a boutique fitness studio or creative studio environment.

There is a generous open-plan area with wood floors and good ceiling height. A series of complementary spaces –a glazed meeting room, an eat-in kitchen, and WCs.

Star and Garter Mansions is immediate to the shops, bars and restaurants of Putney and ideally situated for the start of the famous Boat Race. For green space, enjoy a walk along the River Thames or through nearby Leaders Gardens or Wandsworth Park. Transport links include the Riverboat services from Putney pier, Putney Bridge (District line) and Putney station (National Rail) on the High Street.

### KEY FEATURES

**Commercial space over 1,500 sq. m.**

**Period building near riverfront**

**Generous open-plan area**

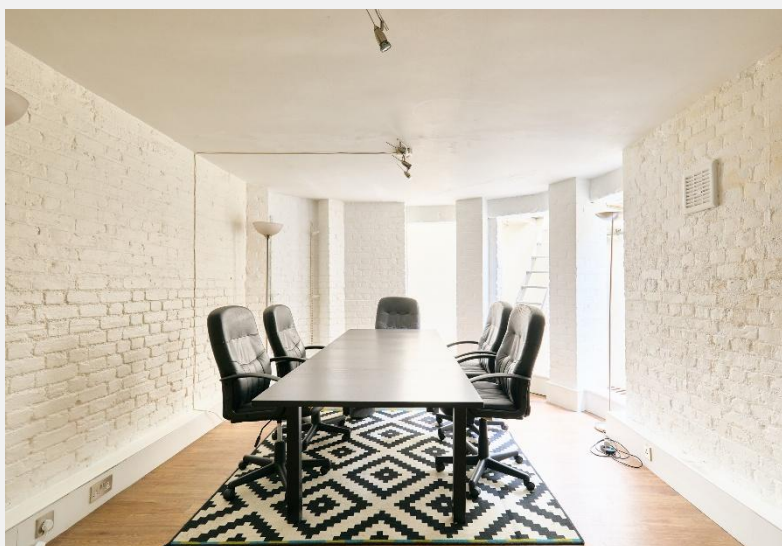
**Wood floors**

**Good ceiling height**

**Meeting room**

**Eat-in kitchen**

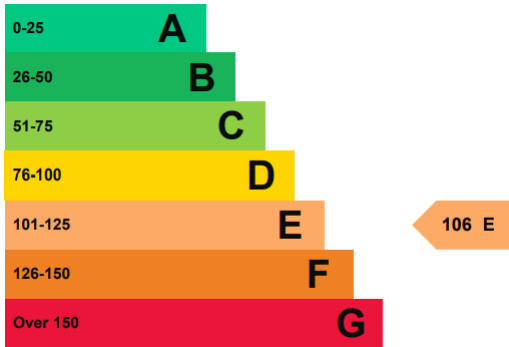
**Convenient located close to shops,  
restaurants and public transport**







ENERGY PERFORMANCE CERTIFICATE



KEY INFORMATION

**Local authority:** London Borough of Wandsworth

**Internal area:** 1,529 sq. ft. / 142.08 sq. m.

LOWER RICHMOND ROAD, PUTNEY SW15



Lower Ground Floor

Approx. Gross Internal Floor Area 1529 sq. ft / 142.08 sq. m

Illustration for identification purposes only, measurements are approximate, not to scale.