

RIVERHOMES

1408, 4b Merchant Square
London

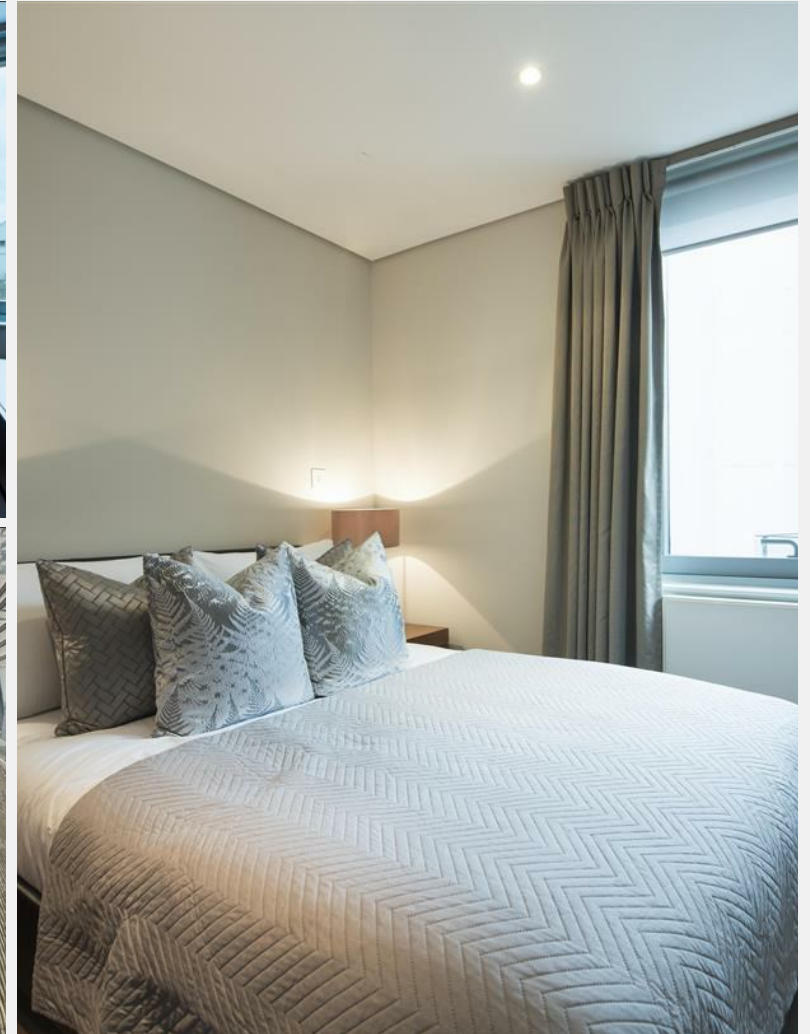
£7,150 Per Month

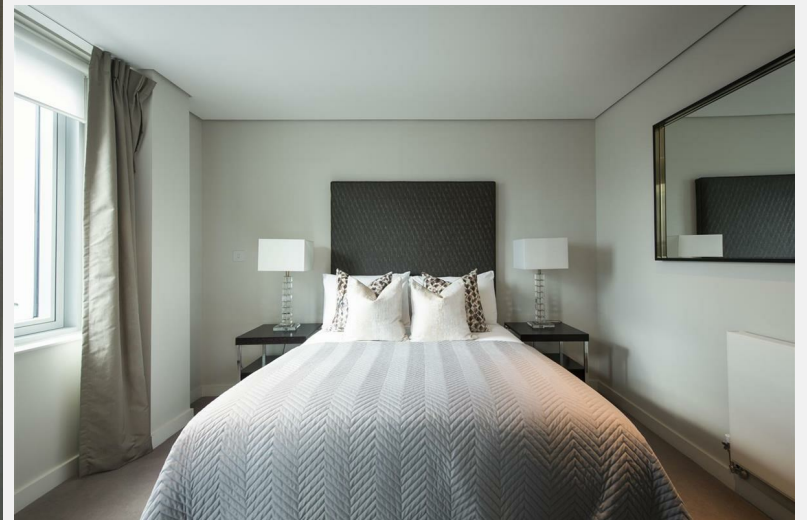


1408, 4b Merchant Square London

KEY FEATURES

- River Views
- Balcony
- Concierge
- On-Site Building Manager
- Pet Friendly
- Comfort Cooling
- Central Location



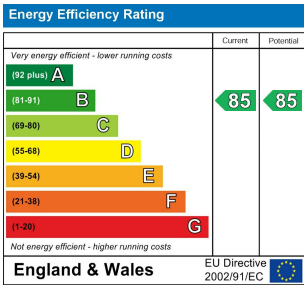


1408, 4b Merchant Square
London

South West & Central London Branch
1 - 3 Lower Richmond Road
London
SW15 1EJ

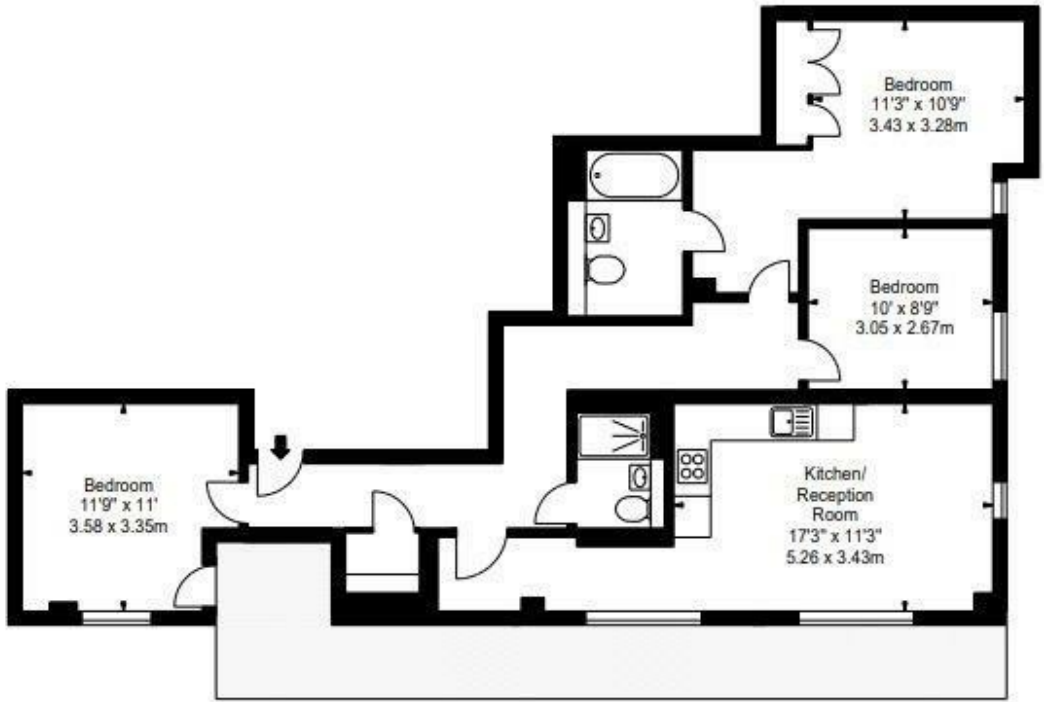
020 8788 6000
www.riverhomes.co.uk

ENERGY PERFORMANCE CERTIFICATE

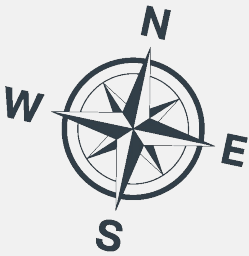


KEY INFORMATION

Local Authority: Westminster City
Internal Area: sq ft
Garden Area: acre(s)
No of Bedrooms: 3



Fourteenth floor



World Waterside Ltd trading as riverhomes for themselves and its clients give notice that 1: They are not authorised to make or give any representations or warranties in relation to the property either here or elsewhere, either on their own behalf or on behalf of their client or otherwise. 2: These particulars do not form part of any offer or contract and must not be relied upon as statements or representations of fact. Any areas, measurements or distances are approximate. The text, photographs and plans are for guidance only and are not necessarily comprehensive. 3: It should not be assumed that the property has all necessary planning, building regulation or other consents and any services, equipment or facilities have not been tested. 4: Lease details, service charges, ground rent (where applicable) and council tax are given as a guide only and should be checked and confirmed by your Solicitor prior to exchange of contracts. 5: They assume no responsibility and any intending purchasers or tenants must satisfy themselves by inspection or otherwise as to the correctness of each of the statements contained within these particulars. If you require clarification of any points please contact us.