

# RIVERHOMES

**Fountain House  
Fulham SW6**

**£3,000 per month  
Furnished**





## Fountain House Fulham SW6

Contemporary two double bedroom apartment located on facilities including Imperial Wharf's Overground station. the 7th floor of Fountain House. Fountain House is part of Residents of Imperial Wharf enjoy the use of landscaped Imperial Wharf which is one of London's premier riverside gardens, a wide range of restaurants, bars and shops and developments. Recently re decorated to a high standard easy access to the Thames River path. for the forthcoming tenancy the apartment is awash with natural light.

The accommodation comprises two double bedrooms, two bathrooms one of which is en suite to the master, a generous reception room (from which a private balcony can be accessed) and a separate well-appointed kitchen. Further benefits include a helpful 24-hour concierge team, residents gym and easy access to local public transport

### KEY FEATURES

**Two bedrooms**

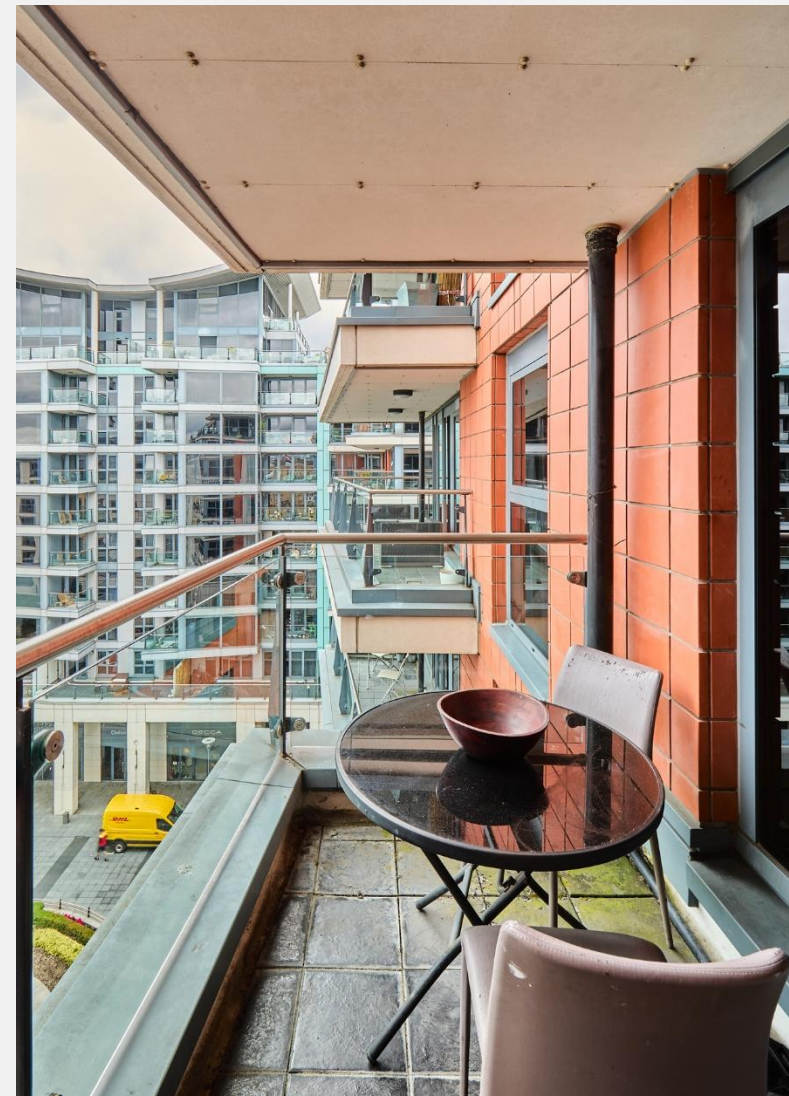
**Riverside Development**

**Concierge**

**Residents Gym**

**Balcony**

**Parking available at cost**







ENERGY PERFORMANCE CERTIFICATE

Score	Energy rating	Current	Potential
92+	A		
81-91	B		84 B
69-80	C	80 C	
55-68	D		
39-54	E		
21-38	F		
1-20	G		

KEY INFORMATION

Local authority:	London Borough of Hammersmith and Fulham
Internal area:	759 sq. ft. / 70.51 sq. m.
Garden area:	Private balcony
No. of bedrooms:	2
Council tax:	Band G



World Waterside Ltd trading as riverhomes for themselves and its clients give notice that 1: They are not authorised to make or give any representations or warranties in relation to the property either here or elsewhere, either on their own behalf or on behalf of their client or otherwise. 2: These particulars do not form part of any offer or contract and must not be relied upon as statements or representations of fact. Any areas, measurements or distances are approximate. The text, photographs and plans are for guidance only and are not necessarily comprehensive. 3: It should not be assumed that the property has all necessary planning, building regulation or other consents and any services, equipment or facilities have not been tested. 4: Lease details, service charges, ground rent (where applicable) and council tax are given as a guide only and should be checked and confirmed by your Solicitor prior to exchange of contracts. 5: They assume no responsibility and any intending purchasers or tenants must satisfy themselves by inspection or otherwise as to the correctness of each of the statements contained within these particulars. If you require clarification of any points please contact us.