

# RIVERHOMES

Adam Walk  
Fulham SW6

£1,395,000  
Leasehold





## Adam Walk Fulham SW6

Tucked along a quiet stretch of the Thames Path, this elegant three-bedroom townhouse captures the essence of refined riverside living. Arranged over three light-filled floors and offering over 1,100 sq. ft. of beautifully considered space, the home blends timeless style with uninterrupted views across the water to the wild beauty of the Barnes Wetlands.

At its heart, a generous eat-in kitchen opens onto a private, south-west facing terrace- an idyllic setting for sunset suppers and morning coffee by the river. Upstairs, the top-floor reception is bathed in natural light and enhanced by Velux Cabrio balconies, creating a seamless connection to the ever-changing river below.

The accommodation is both luxurious and practical, featuring three double bedrooms, two en suite shower rooms, and a family bathroom, all impeccably finished. Set within the boutique riverside enclave of Adams Walk, the home is moments from Bishop's Park and a short stroll to the iconic River Café, with a string of riverside pubs and eateries close at hand.

Transport links are excellent, with swift connections via Barons Court (District & Piccadilly) and nearby bus routes to Hammersmith and Putney.

### KEY FEATURES

**3 luxurious double bedrooms**

**3 bathrooms**

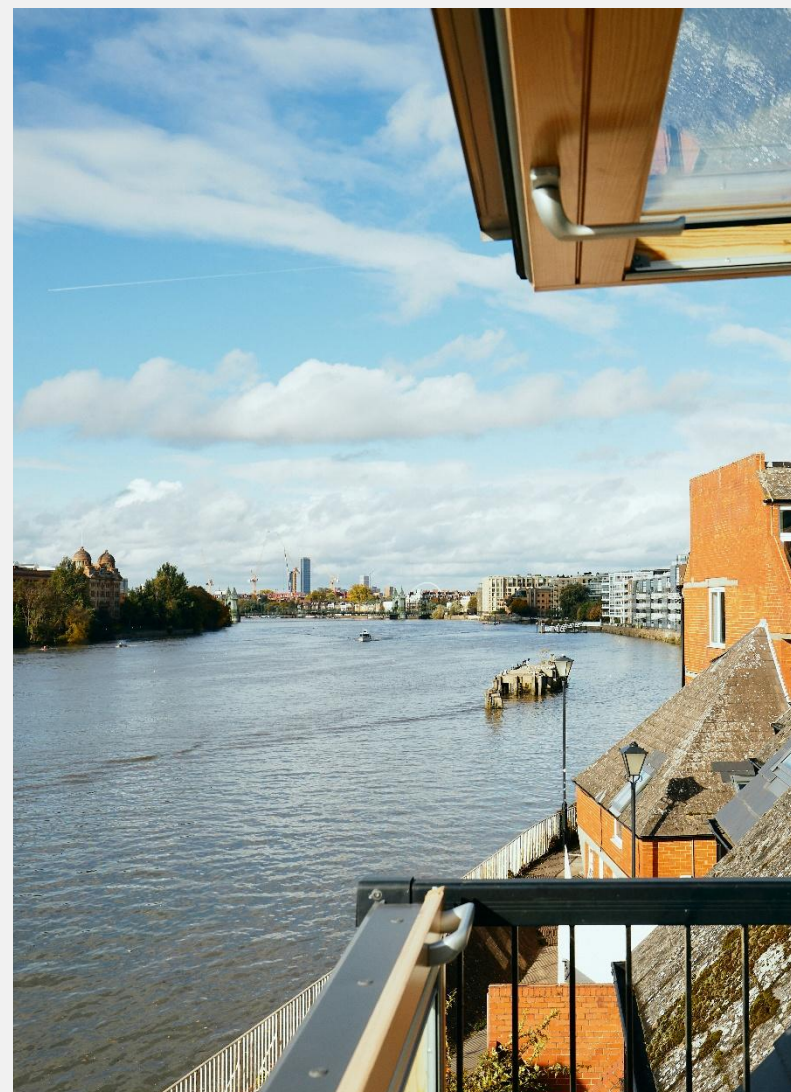
**Panoramic Thames views**

**Private south-west facing terrace**

**Boutique riverside setting**

**Excellent transport connections**

**Front-row position on the Thames Path**

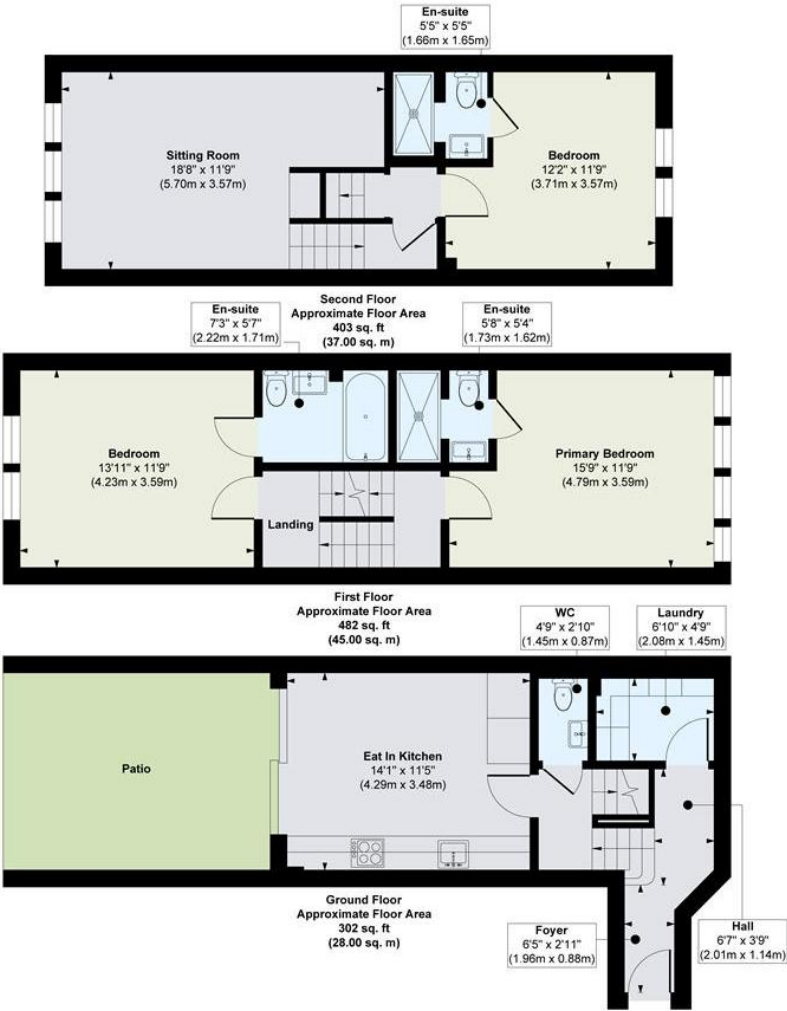






ENERGY PERFORMANCE CERTIFICATE			
Score	Energy rating	Current	Potential
92+	A	72 C	84 B
81-91	B		
69-80	C		
55-68	D		
39-54	E		
21-38	F		
1-20	G		

KEY INFORMATION	
Local authority:	London Borough of Hammersmith and Fulham
Internal area:	1,187 sq. ft. / 110 sq. m.
Council tax band:	E
No. of bedrooms:	3



World Waterside Ltd trading as riverhomes for themselves and its clients give notice that 1: They are not authorised to make or give any representations or warranties in relation to the property either here or elsewhere, either on their own behalf or on behalf of their client or otherwise. 2: These particulars do not form part of any offer or contract and must not be relied upon as statements or representations of fact. Any areas, measurements or distances are approximate. The text, photographs and plans are for guidance only and are not necessarily comprehensive. 3: It should not be assumed that the property has all necessary planning, building regulation or other consents and any services, equipment or facilities have not been tested. 4: Lease details, service charges, ground rent (where applicable) and council tax are given as a guide only and should be checked and confirmed by your Solicitor prior to exchange of contracts. 5: They assume no responsibility and any intending purchasers or tenants must satisfy themselves by inspection or otherwise as to the correctness of each of the statements contained within these particulars. If you require clarification of any points please contact us.