

# RIVERHOMES

**Regent on the River  
Fulham SW6**

**£2,695 per month  
Furnished**





## Regent on the River Fulham SW6

Positioned within the sought-after Regent on the River development, this smart two-bedroom apartment enjoys direct river views. Situated on the second floor, it comprises a good size reception space, separate kitchen and two double bedrooms. Both double bedrooms are equipped with fitted wardrobes, with the master benefiting from its own en-suite shower room. Additional benefits include family bathroom and secure underground parking.

Residents of Regent on the River enjoy a 24-hour concierge, well-maintained communal gardens, and direct access to the Thames Path. Excellent transport links are nearby, including Imperial Wharf Overground, Fulham Broadway Underground, and the Thames Clipper service from Chelsea Harbour Pier.

### KEY FEATURES

**2 double bedrooms**

**2 bathrooms**

**Separate kitchen**

**Private balcony**

**24-hour concierge service**

**Secure underground parking**

**Close to transport links and amenities**





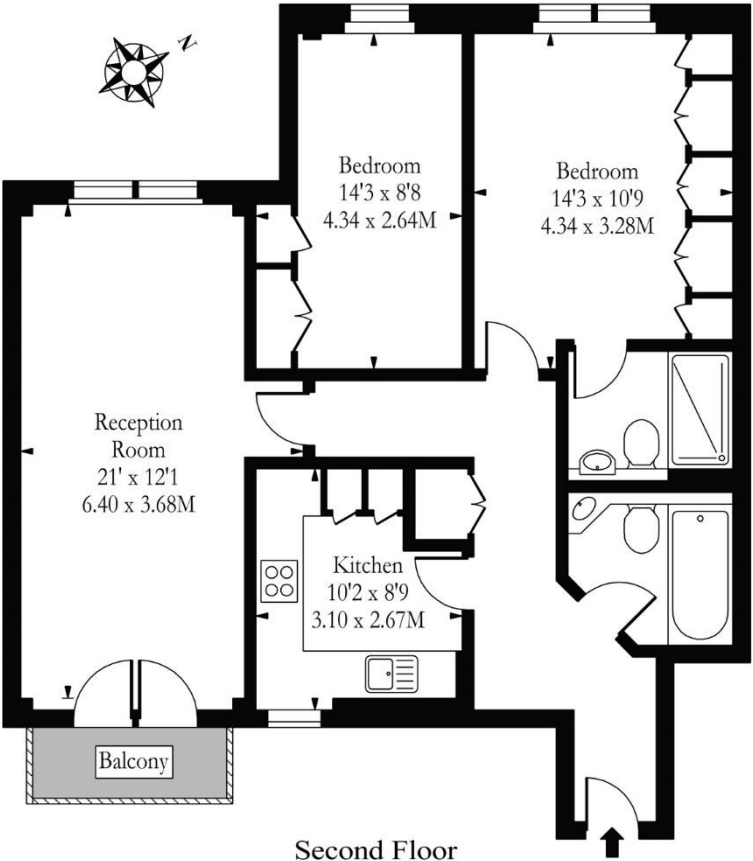
ENERGY PERFORMANCE CERTIFICATE

Score	Energy rating	Current	Potential
92+	A		
81-91	B	82 B	82 B
69-80	C		
55-68	D		
39-54	E		
21-38	F		
1-20	G		

KEY INFORMATION

Local authority:	London Borough of Hammersmith and Fulham
Internal area:	789 sq. ft. / 73.30 sq. m.
Garden area:	Private balcony
No. of bedrooms:	2
Council tax:	Band G

Watermans Quay, SW6



Second Floor  
Approx Gross Internal Area 789 Sq Ft - 73.30 Sq M

Illustration Purposes Only  
Whilst every attempt has been made to ensure the accuracy of the floor plan contained here, measurements of doors, windows, rooms and any other items are approximate and no responsibility is taken for any errors, omissions or mis-statements. The plan is for illustrative purposes only, is not to scale and should be used as such by any prospective purchaser.