

RIVERHOMES

Cheyne Walk
Chelsea SW10

£3,000 per week
Furnished
SHORT LET



Cheyne Walk Chelsea SW10

A brand new, 1,648 sq. ft. two bedroom houseboat moored on the prestigious Cheyne Walk. Enjoying exceptional river views and split over two levels, this stylish floating home has two double bedrooms with en suite bathrooms. The open plan dining / kitchen / living space provides direct access to the spacious sun deck which is perfect for entertaining. The fully integrated kitchen has a large range-style oven, induction hob, dishwasher, fridge and freezer. There is a separate utility / laundry room, cloakroom and a storeroom. There is air conditioning and climate

control and the bathrooms have underfloor heating. With all the comforts of a typical home such as direct mains electricity, water, sewerage, high speed Wi-Fi, all residents of this charming moorings also benefit from a night watchman, CCTV service, concierge and on-site maintenance team. Cheyne Walk is close to a number of transport options, the green spaces of Battersea Park and the shopping and leisure amenities of Kings Road and Sloane Square.

KEY FEATURES

SHORT LET

2 bedrooms

2 en suite bathrooms

Brand new houseboat

Spacious sun deck

Separate utility / laundry room, cloakroom and storeroom

Direct mains electricity, water and sewerage

CCTV service, concierge and on-site maintenance team





KEY INFORMATION

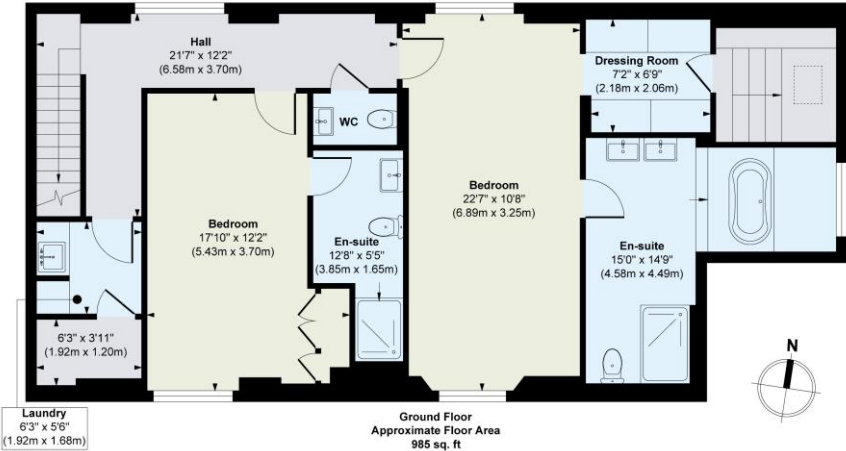
Local authority: Royal Borough of Kensington & Chelsea

Internal area: 1,648 sq. ft. / 153.14 sq. m.

No. of bedrooms: 2



First Floor
Approximate Floor Area
663 sq. ft
(61.63 sq. m)



Ground Floor
Approximate Floor Area
985 sq. ft
(91.51 sq. m)

World Waterside Ltd trading as riverhomes for themselves and its clients give notice that 1: They are not authorised to make or give any representations or warranties in relation to the property either here or elsewhere, either on their own behalf or on behalf of their client or otherwise. 2: These particulars do not form part of any offer or contract and must not be relied upon as statements or representations of fact. Any areas, measurements or distances are approximate. The text, photographs and plans are for guidance only and are not necessarily comprehensive. 3: It should not be assumed that the property has all necessary planning, building regulation or other consents and any services, equipment or facilities have not been tested. 4: Lease details, service charges, ground rent (where applicable) and council tax are given as a guide only and should be checked and confirmed by your Solicitor prior to exchange of contracts. 5: They assume no responsibility and any intending purchasers or tenants must satisfy themselves by inspection or otherwise as to the correctness of each of the statements contained within these particulars. If you require clarification of any points please contact us.