

RIVERHOMES

Westfields
Barnes SW13

£1,650 per month
Unfurnished



Westfields Barnes SW13

At approx. 486 sq. ft, this top floor, one bedroom apartment is finished to a good standard. Equipped with wooden flooring throughout, the flat comprises a good size reception room with direct access to the balcony overlooking communal gardens, a spacious bedroom, neutrally decorated bathroom and well-equipped separate kitchen. Further benefits include good storage throughout, bike store and secure entry system.

Westfield is ideally located for the mix of local independent shops and eateries of Barnes and the green spaces of Barnes Common. The Thames tow path is just a short walk away, offering riverside walks to either Chiswick or Putney. Both Barnes and Barnes Bridge Stations offer frequent services into London Waterloo for the commuter. Hammersmith Underground Station (Hammersmith & City, District and Piccadilly lines) is easily reached by bus.

KEY FEATURES

1 bedroom apartment

Wooden flooring through

Good size reception room

Private balcony

Separate kitchen

Ample storage

Secure entry system

**Conveniently located close to shops,
restaurants and public transport**





ENERGY PERFORMANCE CERTIFICATE

Score	Energy rating	Current	Potential
92+	A		
81-91	B		
69-80	C		
55-68	D	64 D	67 D
39-54	E		
21-38	F		
1-20	G		

KEY INFORMATION

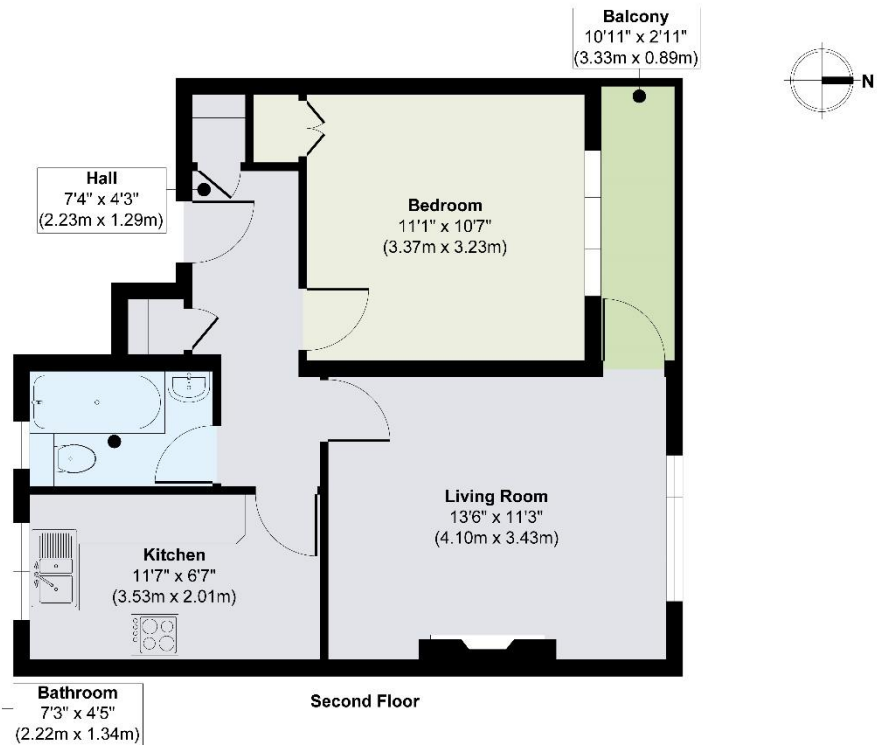
Local authority: Richmond Upon Thames

Internal area: 469 sq. ft. / 43.65 sq. m.

Garden area: Private Balcony

No. of bedrooms: 1

RAILWAY SIDE, BARNES SW13



Approx. Gross Internal Floor Area 469 sq. ft / 43.65 sq. m

Illustration for identification purposes only. measurements are approximate, not to scale.