

# RIVERHOMES

**Kenilworth Court  
Putney SW15**

**£850,000  
Share of Freehold**





## Kenilworth Court Putney SW15

Set within the highly sought-after riverside development of Kenilworth Court, this beautifully presented top-floor apartment offers elegant living in a prime Putney location. Boasting spectacular views of the River Thames and communal gardens, the property combines modern comfort with timeless charm.

The spacious layout includes three well-proportioned bedrooms, a stylish bathroom, and a bright kitchen/dining room. At the heart of the home is a magnificent and refined sitting room,

perfect for entertaining or simply relaxing while enjoying the tranquil outlook.

Ideally positioned just off Lower Richmond Road, the apartment is less than 200 metres from Putney High Street, placing a vibrant mix of shops, cafés, bars, and restaurants just moments away. Excellent transport links are also close at hand, with Putney Bridge Underground Station and Putney Railway Station (offering direct access to London Waterloo and beyond) both approximately 0.4 miles from the property.

### KEY FEATURES

**3 bedroom apartment**

**Spacious layout**

**Ample storage**

**Bright kitchen / dining room**

**Stylish bathroom**

**Direct river views**

**Communal garden**

**Conveniently located close to Shops,  
Restaurants and public transport**





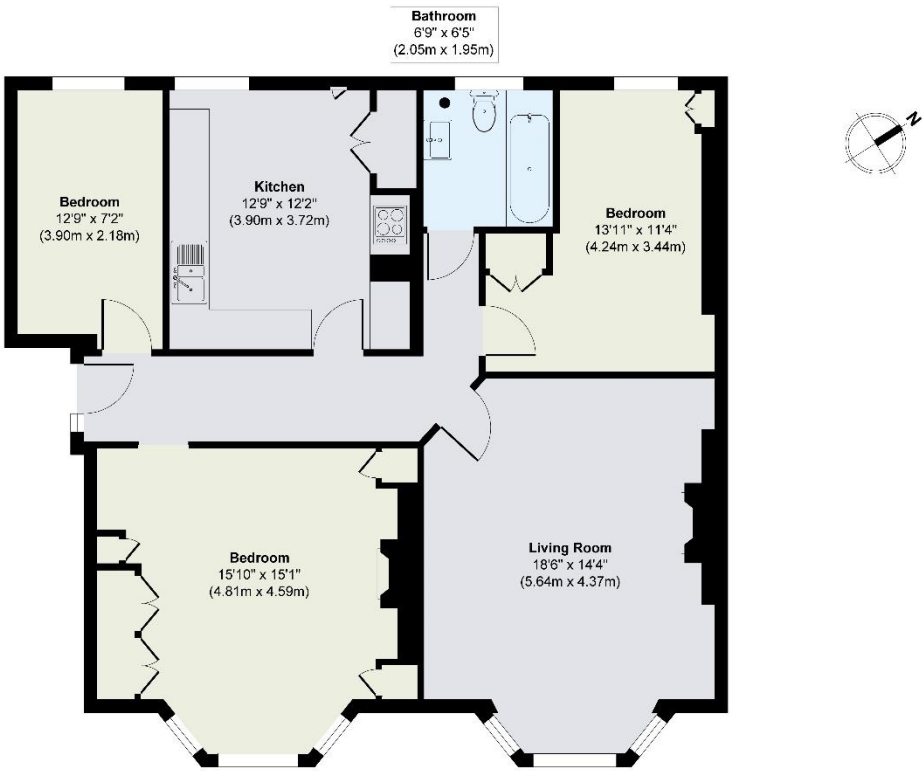
ENERGY PERFORMANCE CERTIFICATE

Score	Energy rating	Current	Potential
92+	A		
81-91	B		81 B
69-80	C		
55-68	D	61 D	
39-54	E		
21-38	F		
1-20	G		

KEY INFORMATION

- Local authority:** London Borough of Wandsworth
- Internal area:** 1,004 sq. ft. / 93.28 sq. m.
- Garden area:** Communal Garden
- No. of bedrooms:** 3
- Council tax:** Band E
- Lease length:** 189 years from 25 March 1993
- Service charges:** "4,100 per year approx.

KENILWORTH COURT, PUTNEY SW15



Fourth Floor

Approx. Gross Internal Floor Area 1004 sq. ft / 93.28 sq. m  
Illustration for identification purposes only, measurements are approximate, not to scale.

World Waterside Ltd trading as riverhomes for themselves and its clients give notice that 1: They are not authorised to make or give any representations or warranties in relation to the property either here or elsewhere, either on their own behalf or on behalf of their client or otherwise. 2: These particulars do not form part of any offer or contract and must not be relied upon as statements or representations of fact. Any areas, measurements or distances are approximate. The text, photographs and plans are for guidance only and are not necessarily comprehensive. 3: It should not be assumed that the property has all necessary planning, building regulation or other consents and any services, equipment or facilities have not been tested. 4: Lease details, service charges, ground rent (where applicable) and council tax are given as a guide only and should be checked and confirmed by your Solicitor prior to exchange of contracts. 5: They assume no responsibility and any intending purchasers or tenants must satisfy themselves by inspection or otherwise as to the correctness of each of the statements contained within these particulars. If you require clarification of any points please contact us.