



## Albion Quay Battersea SW11

A wonderful opportunity to rent a spacious two bedroom Houseboat within the bow of a Belgian Barge. With generous proportions throughout, the split level living space benefits from an open plan kitchen, good storage, and is bright and sunny with well placed skylights and portholes. The accommodation further comprises a sunny master bedroom with ensuite bathroom and dressing room. There is a second good size bedroom with ensuite shower room. Further benefits include a sun deck and houseboat benefits from hardwood floors throughout.

Albion Quay is a small private mooring located in Battersea located close to Battersea Square which has been attractively landscaped and part pedestrianised and is well known for its open-air cafés and restaurants. Underground and National Rail services are located at Clapham Junction, the area is also well serviced by local buses and the Thames Clipper riverboat service at Plantation Wharf Pier.

### KEY FEATURES

**Two bedroom houseboat**

**Split level living space**

**Ample storage**

**En suite bathroom**

**Sunny throughout**

**Furnished**

**Conveniently located close to shops, restaurants and public transport**



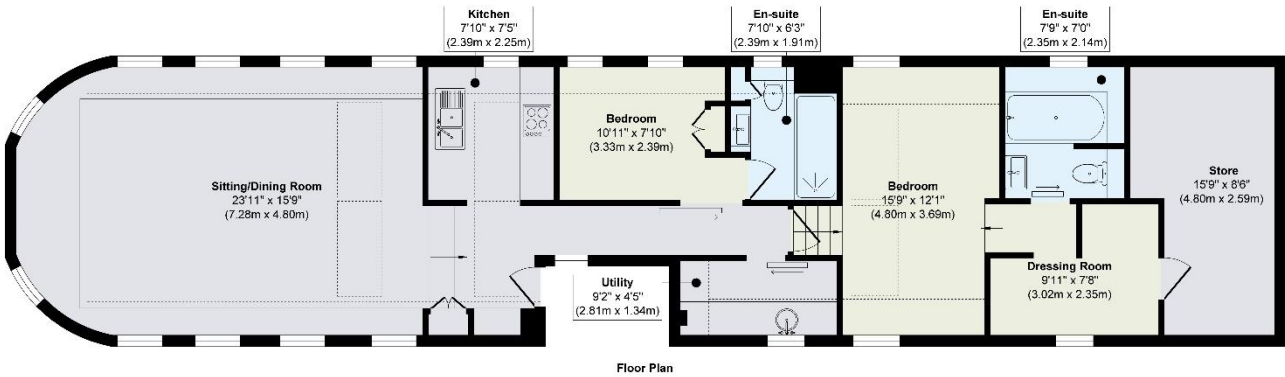




KEY INFORMATION

Local authority:	Richmond Upon Thames
Internal area:	1,108 sq. ft. / 102.90 sq. m.
Deck area:	Sun deck
No. of bedrooms:	2
Council tax	Band A

LOMBARD ROAD, SW11



Approx. Gross Internal Floor Area 1108 sq. ft / 102.90 sq. m

Illustration for identification purposes only, measurements are approximate, not to scale.

World Waterside Ltd trading as riverhomes for themselves and its clients give notice that 1: They are not authorised to make or give any representations or warranties in relation to the property either here or elsewhere, either on their own behalf or on behalf of their client or otherwise. 2: These particulars do not form part of any offer or contract and must not be relied upon as statements or representations of fact. Any areas, measurements or distances are approximate. The text, photographs and plans are for guidance only and are not necessarily comprehensive. 3: It should not be assumed that the property has all necessary planning, building regulation or other consents and any services, equipment or facilities have not been tested. 4: Lease details, service charges, ground rent (where applicable) and council tax are given as a guide only and should be checked and confirmed by your Solicitor prior to exchange of contracts. 5: They assume no responsibility and any intending purchasers or tenants must satisfy themselves by inspection or otherwise as to the correctness of each of the statements contained within these particulars. If you require clarification of any points please contact us.