



Cheyne Walk Chelsea SW10

Situated at prestigious Cheyne Walk Moorings, Viceroy is a beautiful bespoke houseboat which has been thoughtfully converted and finished to the highest standard throughout. Benefiting from direct river views and split over two levels, this stylish floating home comprises Three Double Bedrooms, with master en-suite and family bathroom. The open plan kitchen/living space offers direct access to the spacious deck area. The fully integrated kitchen offers a large range-style oven, induction hob, dishwasher and fridge freezer. There is a separate utility / laundry room which offers additional storage. Further benefits include air conditioning and climate control. The bathrooms have underfloor heating. With all the comforts of a typical home such as mains electricity, water, sewerage and telephone services, all residents of this charming mooring also benefit from a night watchman, CCTV service and an on-site maintenance team. Cheyne Walk is located close to a number of transport options, the green spaces of Battersea park and shopping and leisure amenities at Kings Road and Sloane Square.

KEY FEATURES

Local Authority: Royal Borough of Kensington and Chelsea

Internal Area: 1,301 sq. ft. / 120.89 sq. m.

Beautiful three bedroom houseboat

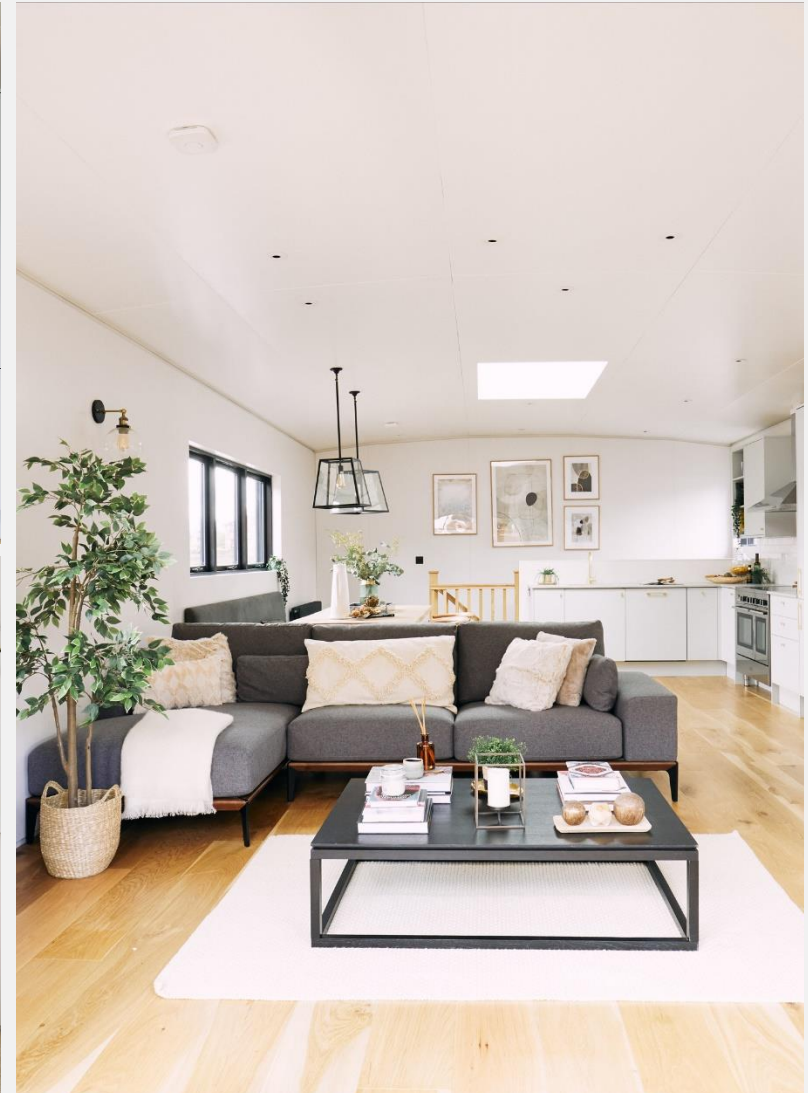
Open plan kitchen/living space

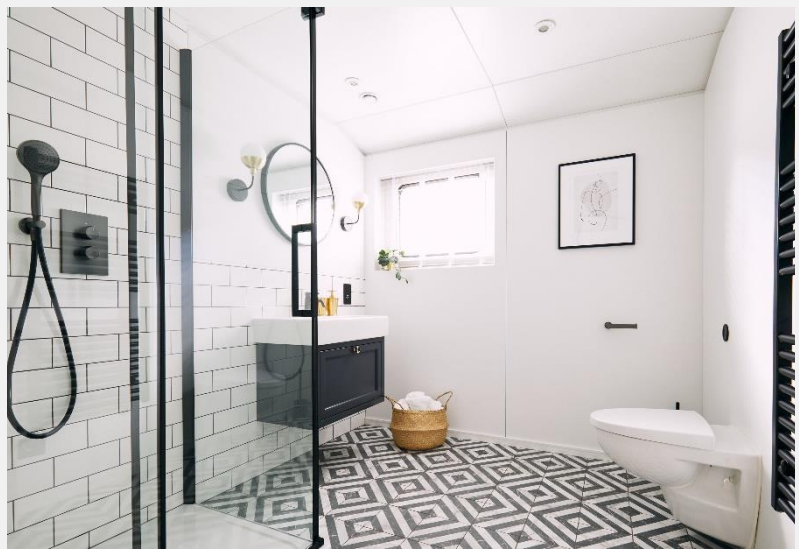
Spacious deck area

Night watchman and CCTV service

Concierge Service for Parcel delivery

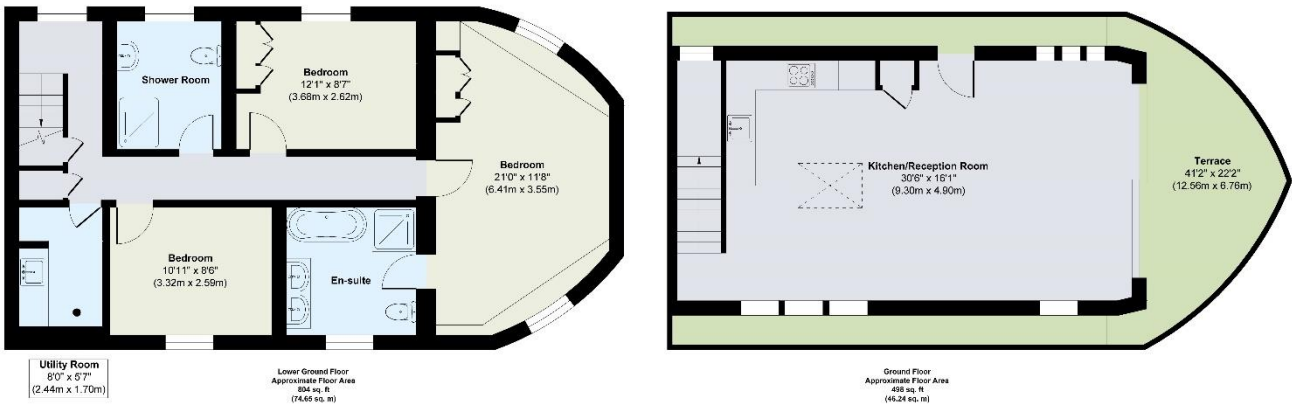
Fantastic location





KEY INFORMATION	
Local authority:	Royal Borough of Kensington and Chelsea
Council tax band:	F
Internal area:	1,301 sq. ft. / 120.89 sq. m.
Garden area:	Spacious deck area
No. of bedrooms:	3

CHEYNE WALK, CHELSEA SW10



Approx. Gross Internal Floor Area 1301 sq. ft / 120.89 sq. m

Illustration for identification purposes only, measurements are approximate, not to scale.