

RIVERHOMES

**Mendip Court
Battersea SW11**

**£2,950 per month
Unfurnished**



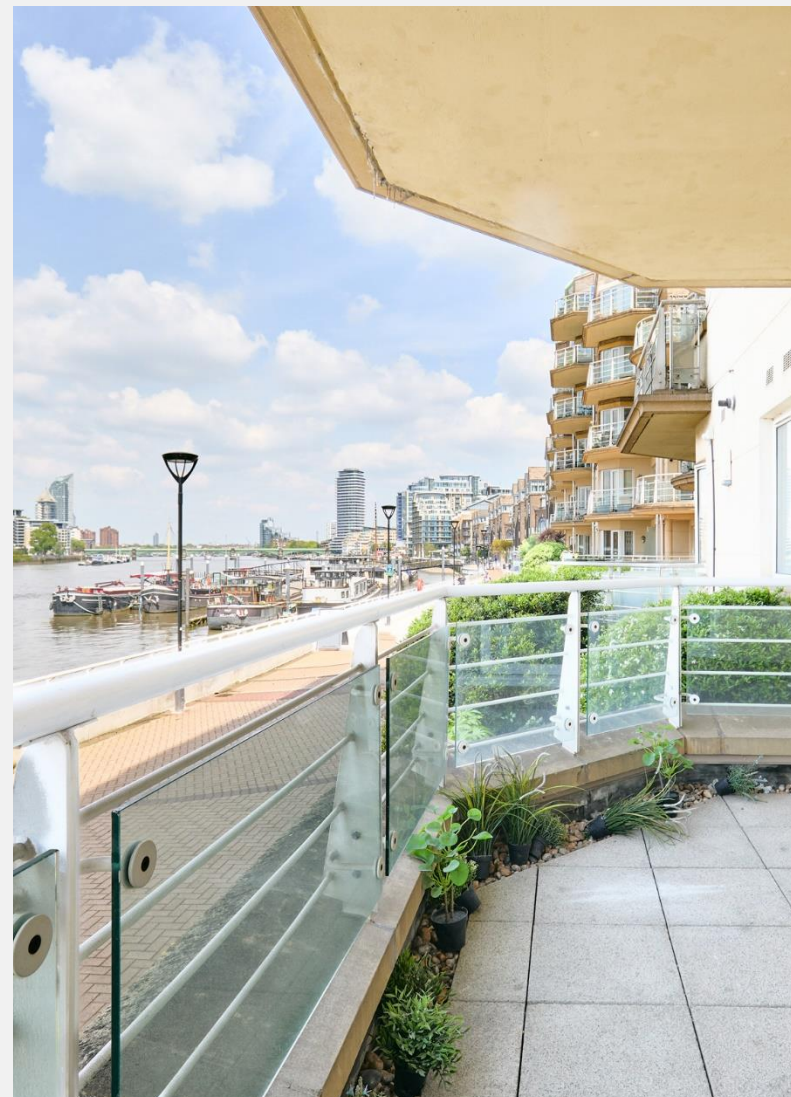
Mendip Court Battersea SW11

A spacious two bedroom apartment located within a popular riverside development enjoying direct views across the River Thames from the lounge and private terrace. The property comprises an incredibly spacious reception room with sufficient space for both a lounge and dining area, modern kitchen, two double bedrooms and two bathrooms, one of which is en suite to the master. In addition, the apartment has an allocated underground parking space and residents enjoy the benefit of an on-site porter and immediate access to the Thames Towpath. There is also an

option for a second parking space if required. Transport options include prompt access to Wandsworth Town National Rail Station with regular services into Waterloo via Clapham Junction. The area is also provided with a comprehensive bus network.

KEY FEATURES

- Two double bedroom apartment**
- Two bathrooms**
- Spacious reception room**
- Balcony**
- Secure underground parking**
- On-site porter**
- Local authority: London Borough of Wandsworth**

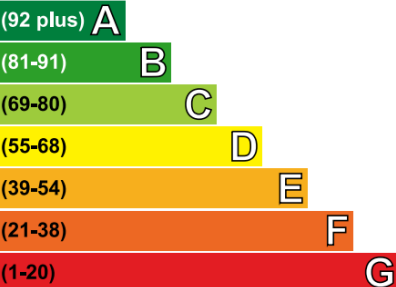




ENERGY PERFORMANCE CERTIFICATE

Energy Efficiency Rating

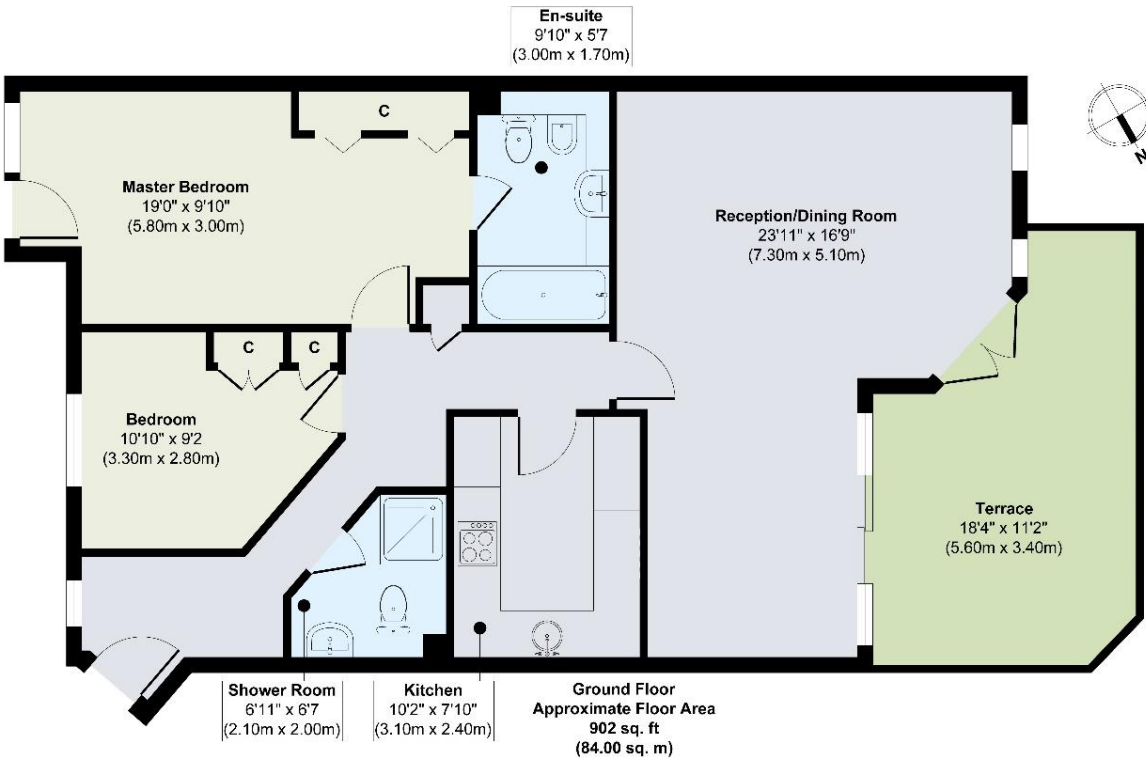
Very energy efficient - lower running costs



Not energy efficient - higher running costs

KEY INFORMATION

- Local authority:** Wandsworth
- Internal area:** 902 sq. ft. / 84 sq. m.
- Garden area:** Private Terrace
- No. of bedrooms:** 2
- Council tax:** Band G



Approx. Gross Internal Floor Area 902 sq. ft / 84.00 sq. m
Illustration for identification purposes only, measurements are approximate, not to scale.