

# RIVERHOMES

Poplar Waterside & Marina  
Poplar E14

£125,000  
Leisure Mooring





## Poplar Waterside & Marina

### Poplar E14

Step aboard this extraordinary floating home, just minutes from Canary Wharf. Seamlessly blending comfort and convenience, Nautilus is sure to impress with its bespoke specifications and handcrafted interiors - the perfect pied-à-terre!

This is a unique opportunity to acquire a bespoke water home, conveniently located at Poplar Marina. This perfectly designed one-bedroom home features a fitted kitchenette with integrated appliances and ample cupboard space, a modern bathroom with an electric flush toilet and shower, and a contemporary styled living space.

The houseboat is fully insulated to meet building regulations and is equipped with heating, ensuring a comfortable living environment year-round. It boasts

an electric propulsion system and a mains water connection, and can also be used 'off-grid'.

The highlight has to be your own private roof terrace, ideal for sunbathing, dining al fresco, or simply enjoying the scenic views of the marina.

Location: Poplar Marina is just a short walk from the Canary Wharf estate, with its wide array of shops, restaurants, and entertainment options. The marina is well connected to the DLR, Jubilee Line, and Elizabeth Line. The current mooring enjoys a sunny southerly aspect in a quiet part of the marina.

#### KEY FEATURES

**One-bedroom floating home**

**Fitted kitchenette**

**Ample storage**

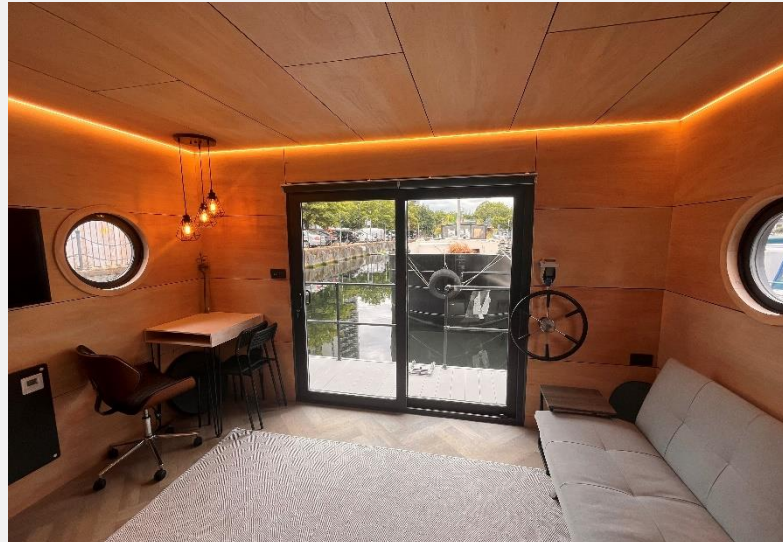
**Modern bathroom**

**Electric propulsion system**

**Main water connection**

**Roof terrace**

**Conveniently located close to shops, restaurants and public transport**





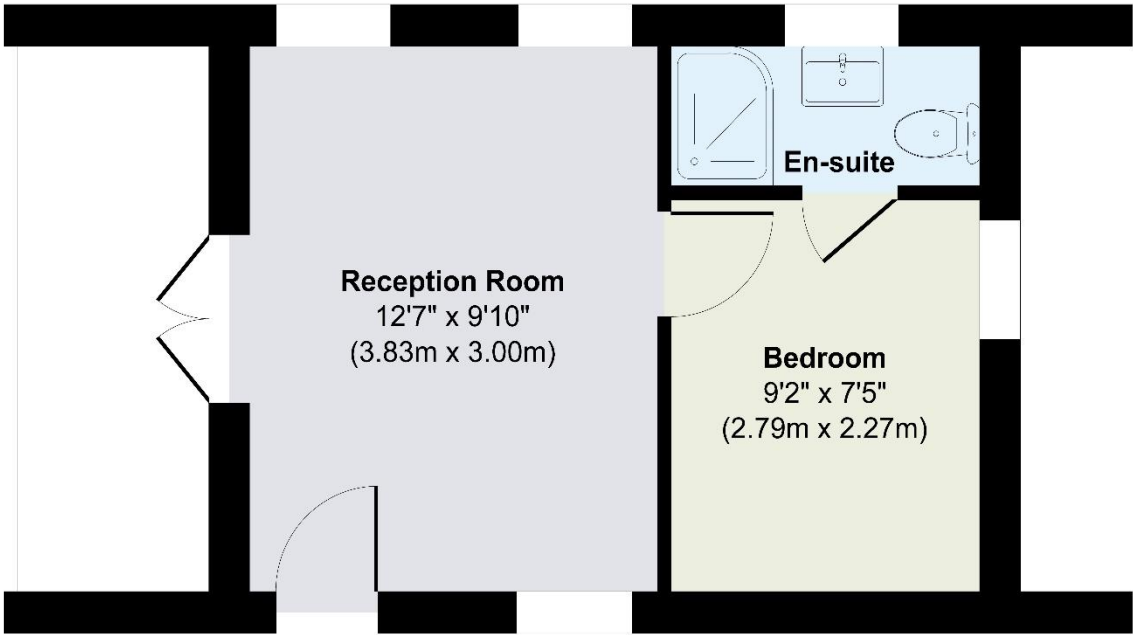


KEY INFORMATION

|                  |                                 |
|------------------|---------------------------------|
| Local authority: | London Borough of Tower Hamlets |
| Internal area:   | 225 sq. ft. / 20.9 sq. m.       |
| Garden area:     | Deck                            |
| No. of bedrooms: | 1                               |
| Mooring charges: | £9,000 per year approx.         |



Houseboat Nautilus



Floor Plan