

RIVERHOMES

Imperial Wharf
Fulham SW6

£375,000
Leisure Mooring



Imperial Wharf Fulham SW6

This luxurious two-bedroom, two-bathroom houseboat has been redesigned to a high standard. It features underfloor heating, central heating, a wood-burning stove, and full insulation throughout. Built from scratch in 2006, this twin-engined steel yacht was originally designed to cruise the Mediterranean and French canals. If you feel adventurous, you have the luxury of taking your floating home with you!

The houseboat boasts front and back decks, a phenomenal top deck, a large open-plan sitting room, a kitchen, a hand-built dining room, and two wheelhouses, providing plenty of space. High ceilings and huge picture windows offer stunning natural light and space throughout, with unparalleled views of the River Thames. The lower floor includes a spacious master

bedroom with a feature bath, perfect for star-gazing through the skylight, an en suite bathroom, a dressing room, and an additional storage room.

Moored at the exclusive Imperial Wharf in Fulham, it is close to the shops, restaurants, and bars of Chelsea, making it a wonderful pied-à-terre. Imperial Wharf station offers excellent links to National Rail trains, which connect with Underground stations. The Thames Clipper river bus stops at the nearby Chelsea Design Centre Pier. You really need to view this boat to fully appreciate all that it offers.

KEY FEATURES

Twin engine yacht

2 bedrooms

2 bathrooms

Open-plan kitchen and living area

Ample storage

Redesigned to a high standard

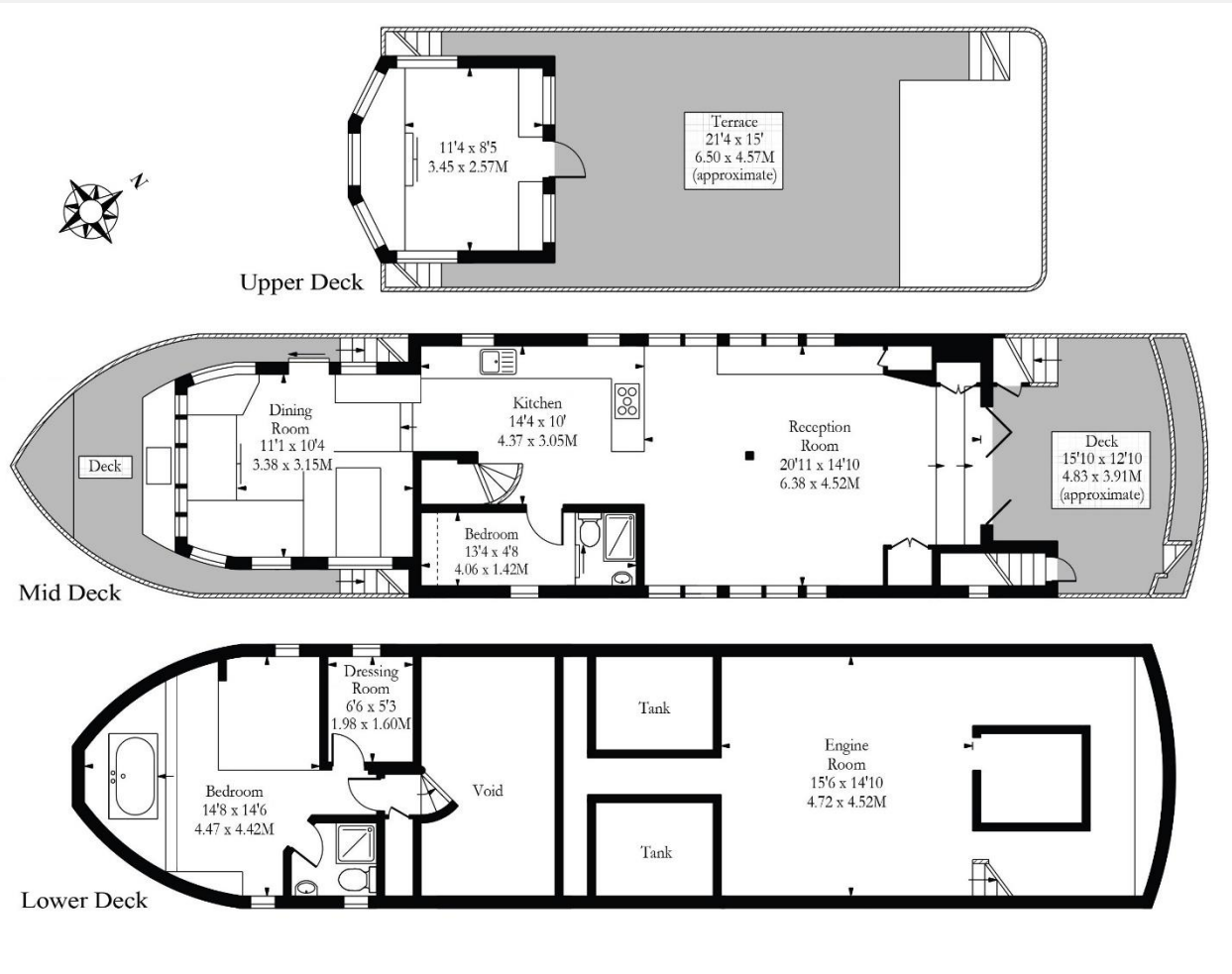
Excellent local transport links





KEY INFORMATION

Local authority:	London Borough of Hammersmith and Fulham
Internal area:	1,581 sq. ft. / 146.88 sq. m.
Garden area:	Spacious Deck
No. of bedrooms:	2
Mooring charges:	£20,472 per year approx.



World Waterside Ltd trading as riverhomes for themselves and its clients give notice that 1: They are not authorised to make or give any representations or warranties in relation to the property either here or elsewhere, either on their own behalf or on behalf of their client or otherwise. 2: These particulars do not form part of any offer or contract and must not be relied upon as statements or representations of fact. Any areas, measurements or distances are approximate. The text, photographs and plans are for guidance only and are not necessarily comprehensive. 3: It should not be assumed that the property has all necessary planning, building regulation or other consents and any services, equipment or facilities have not been tested. 4: Lease details, service charges, ground rent (where applicable) and council tax are given as a guide only and should be checked and confirmed by your Solicitor prior to exchange of contracts. 5: They assume no responsibility and any intending purchasers or tenants must satisfy themselves by inspection or otherwise as to the correctness of each of the statements contained within these particulars. If you require clarification of any points please contact us.