

# RIVERHOMES

Regent on the River  
Fulham SW6

£1,395,000  
Leasehold





## Regent on the River Fulham SW6

Nestled within the prestigious Regent on the River development, this exquisite three-bedroom apartment in Sailmakers Court spans an impressive 1,885 sq. ft. Positioned on the seventh floor, it's graced with abundant natural light and sweeping, unobstructed views of the Thames, with dual-aspect vistas to the south and east that capture the river's beauty at all hours.

The expansive living area flows with effortless elegance into a versatile winter garden—a sanctuary for year-round relaxation. This space transforms seamlessly, offering the warmth of an enclosed lounge or, when opened, an airy terrace that invites the outside in. Each of the three generously proportioned double bedrooms boasts its own en-suite bathroom, while the master

suite is a retreat in itself, complete with a walk-in wardrobe and a refined en-suite featuring a walk-in shower. Thoughtfully integrated storage throughout and secure underground parking further enhance the comfort and convenience of this residence.

Residents of Regent on the River enjoy a lifestyle marked by ease and elegance, with a 24-hour concierge, meticulously maintained communal gardens, and direct access to the tranquil Thames Path. Superb transport links—including Imperial Wharf Overground, Fulham Broadway Underground, and the Thames Clipper from Chelsea Harbour Pier—place this apartment in a perfect union of luxury and accessibility.

### KEY FEATURES

**3 double bedrooms**

**3 bathrooms**

**Direct river views**

**Spacious reception**

**Large winter garden**

**Ample storage**

**Concierge service**

**Underground parking**







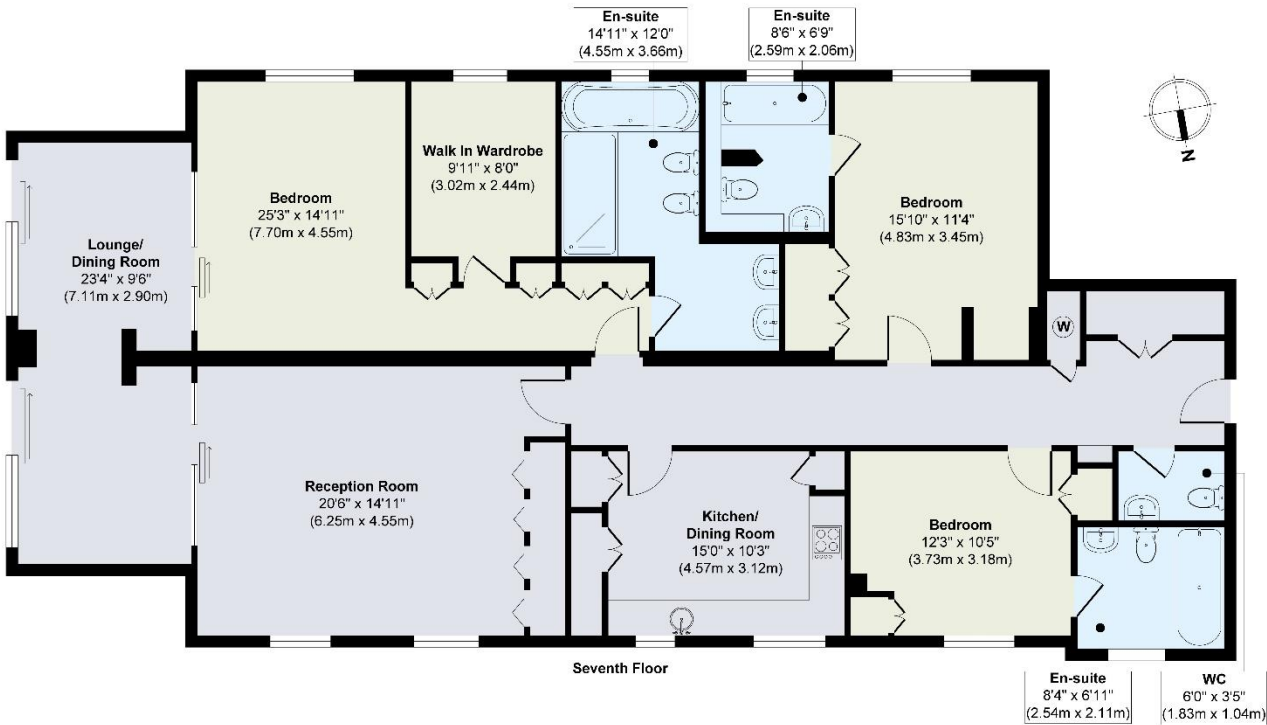
ENERGY PERFORMANCE CERTIFICATE

Score	Energy rating	Current	Potential
92+	A		
81-91	B		
69-80	C	79 C	79 C
55-68	D		
39-54	E		
21-38	F		
1-20	G		

KEY INFORMATION

Local authority:	Hammersmith and Fulham
Internal area:	1,884 sq. ft. / 175 sq. m.
No. of bedrooms:	3
Council tax:	Band G
Service charge:	Tbc per year
Lease length:	964 years remaining

REGENT ON THE RIVER, WILLIAM MORRIS WAY SW6



World Waterside Ltd trading as riverhomes for themselves and its clients give notice that 1: They are not authorised to make or give any representations or warranties in relation to the property either here or elsewhere, either on their own behalf or on behalf of their client or otherwise. 2: These particulars do not form part of any offer or contract and must not be relied upon as statements or representations of fact. Any areas, measurements or distances are approximate. The text, photographs and plans are for guidance only and are not necessarily comprehensive. 3: It should not be assumed that the property has all necessary planning, building regulation or other consents and any services, equipment or facilities have not been tested. 4: Lease details, service charges, ground rent (where applicable) and council tax are given as a guide only and should be checked and confirmed by your Solicitor prior to exchange of contracts. 5: They assume no responsibility and any intending purchasers or tenants must satisfy themselves by inspection or otherwise as to the correctness of each of the statements contained within these particulars. If you require clarification of any points please contact us.