

RIVERHOMES

2609 West India Quay Hertsmere Road
Docklands

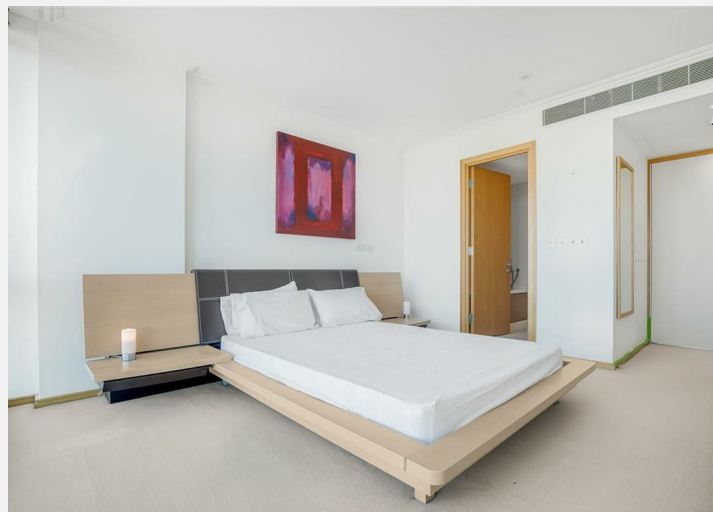
£3,965 Per Month

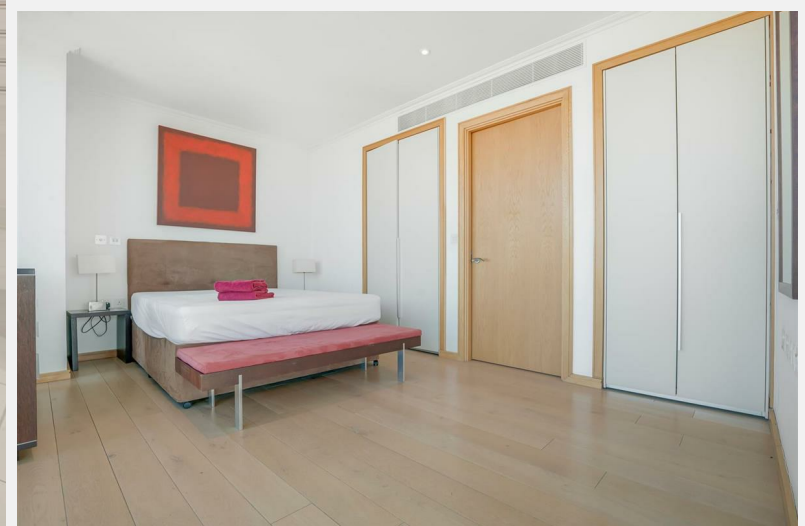


2609 West India Quay Hertsmere Road Docklands

KEY FEATURES

- Skyline Views
- Two Bedroom
- Ensuite Showerroom
- Concierge
- Parking
- Corner Apartment
- Council Tax Band F
- London Borough of Tower Hamlets



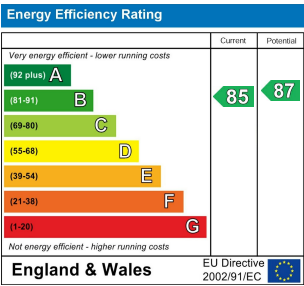


2609 West India Quay
Quay Hertsmere Road
Docklands

South West & Central London Branch
1 - 3 Lower Richmond Road
London
SW15 1EJ

020 8788 6000
www.riverhomes.co.uk

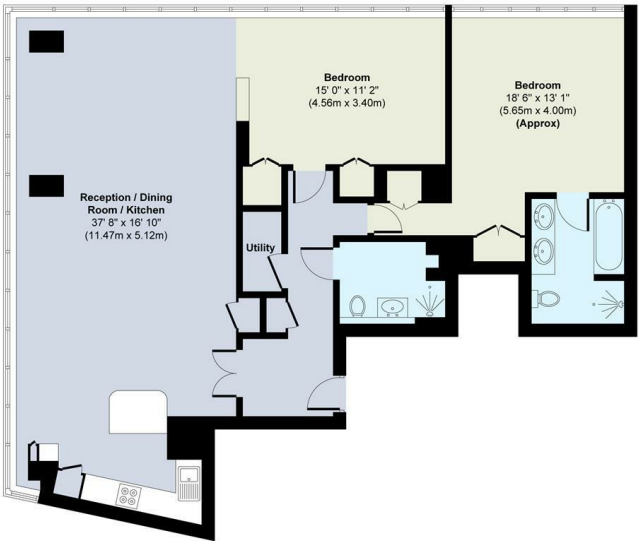
ENERGY PERFORMANCE CERTIFICATE



KEY INFORMATION

Local Authority: Tower Hamlets
Internal Area: sq ft
Garden Area: acre(s)
No of Bedrooms: 2

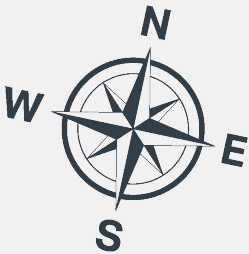
West India Quay



Twenty Sixth Floor

Approximate Gross Internal Area = 122 sq.m / 1313 sq.ft

This plan is not to scale and must be used as layout guidance only. All measurements and areas are approximate and should not be relied upon to provide accurate information. This plan must not be relied upon when making property valuations, design considerations or any other such relevant decisions. We accept no responsibility or liability (whether in contract, tort or otherwise) in relation to any loss whatsoever arising from or in connection with any use of this plan or the adequacy, accuracy or completeness of it or any information within it.



World Waterside Ltd trading as riverhomes for themselves and its clients give notice that 1: They are not authorised to make or give any representations or warranties in relation to the property either here or elsewhere, either on their own behalf or on behalf of their client or otherwise. 2: These particulars do not form part of any offer or contract and must not be relied upon as statements or representations of fact. Any areas, measurements or distances are approximate. The text, photographs and plans are for guidance only and are not necessarily comprehensive. 3: It should not be assumed that the property has all necessary planning, building regulation or other consents and any services, equipment or facilities have not been tested. 4: Lease details, service charges, ground rent (where applicable) and council tax are given as a guide only and should be checked and confirmed by your Solicitor prior to exchange of contracts. 5: They assume no responsibility and any intending purchasers or tenants must satisfy themselves by inspection or otherwise as to the correctness of each of the statements contained within these particulars. If you require clarification of any points please contact us.