

RIVERHOMES

Riverside Quarter
Wandsworth SW18

£1,195,000
Leasehold



Riverside Quarter Wandsworth SW18

Set within this exclusive riverside development, this fourth floor two double bedroom apartment has direct views over the River Thames towards the picturesque Hurlingham Club. This Two double bedroom apartment boasts a high specification throughout and benefits from an open plan reception room leading to a large balcony over the river, enjoying direct River views. The kitchen is fully fitted with integrated appliances with space to dine. The well-proportioned Master bedroom has built in wardrobes and an en suite bathroom. There is a further family bathroom and a second double bedroom with built in wardrobes. The property is supplied with comfort air cooling and underfloor heating.

Eastfields Avenue is part of the Riverside Quarter development and has excellent facilities including a residents' health club with swimming pool, gym,

sauna and steam room, concierge, bars and restaurants. It also has the added convenience of a secure underground parking space, accessible by lift, as well as communal bike storage.

The property is located within walking distance to Wandsworth Town station and residents have use of the shuttle bus (at peak hours) to the local underground station at East Putney. The Thames Clipper River boat service to Westminster and the City leaves directly from the development. The pretty green spaces of Wandsworth Park are also moments away.

KEY FEATURES

2 double bedrooms

2 bathrooms

Direct river views

Large balcony

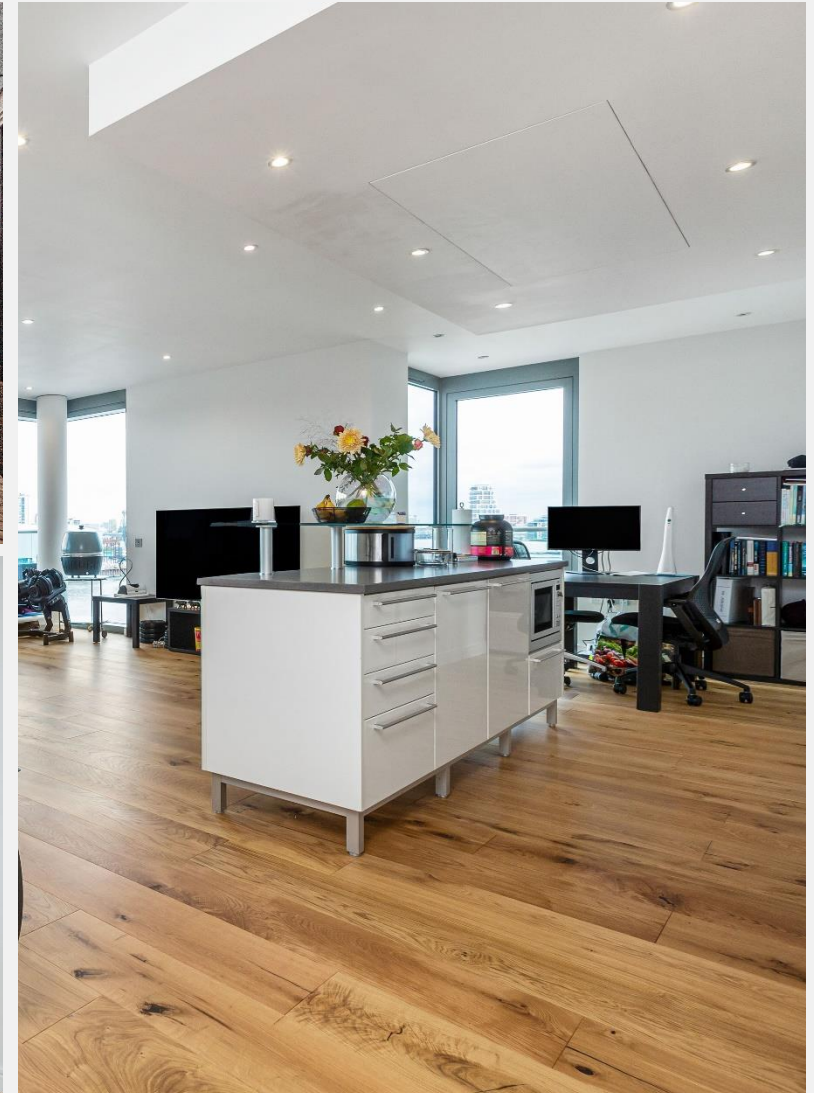
Open plan reception room

Residents have access to swimming pool and gym

Concierge service

Secure underground parking

The property is located within walking distance to Wandsworth Town station and residents have use of the shuttle bus (at peak hours) to the local underground station at East Putney. The Thames Clipper River boat service to Westminster and the City leaves directly from the development. The pretty green spaces of Wandsworth Park are also moments away.





ENERGY PERFORMANCE CERTIFICATE

Score	Energy rating	Current	Potential
92+	A		
81-91	B	81 B	81 B
69-80	C		
55-68	D		
39-54	E		
21-38	F		
1-20	G		

KEY INFORMATION

Local authority:	London Borough of Wandsworth
Internal area:	1,223 sq. ft. / 113.6 sq. m.
Garden area:	Balcony
No. of bedrooms:	2
Council tax	Band G
Service charge	TBC
Lease length	977 years remaining

