



Mortlake High Street Mortlake SW14

A spacious top floor two bedroom apartment within an 18th century period home. This apartment comprises a large, open plan living area with a striking bow feature which benefits from a Juliet balcony offering stunning views of the river and the green spaces of Dukes Meadows. Recently refurbished throughout, there are two spacious double bedrooms and a family bathroom with both a bath and shower. Further benefits include off street parking and a communal garden. The special position of this flat over the river means a good view of the famous Oxford &

Cambridge Boat Race. Mortlake and Barnes Bridge National Rail Stations provide regular services to London Waterloo.

The pubs, independent boutiques and cafes of Barnes Village and White Hart Lane are a short walk away. The wide-open spaces of Barnes Common, Richmond Park and Kew Gardens are within easy reach. EPC rating D. Council tax band E.

KEY FEATURES

- Two double bedroom apartment**
- Large living area with Juliet balcony**
- Open plan kitchen area with breakfast bar**
- Allocated parking**
- Recently decorated throughout**
- Council tax: Band E**
- EPC rating D**
- Local Authority: London Borough of Richmond upon Thames**





ENERGY PERFORMANCE CERTIFICATE

Score	Energy rating	Current	Potential
92+	A		
81-91	B		
69-80	C		
55-68	D	66 D	75 C
39-54	E		
21-38	F		
1-20	G		

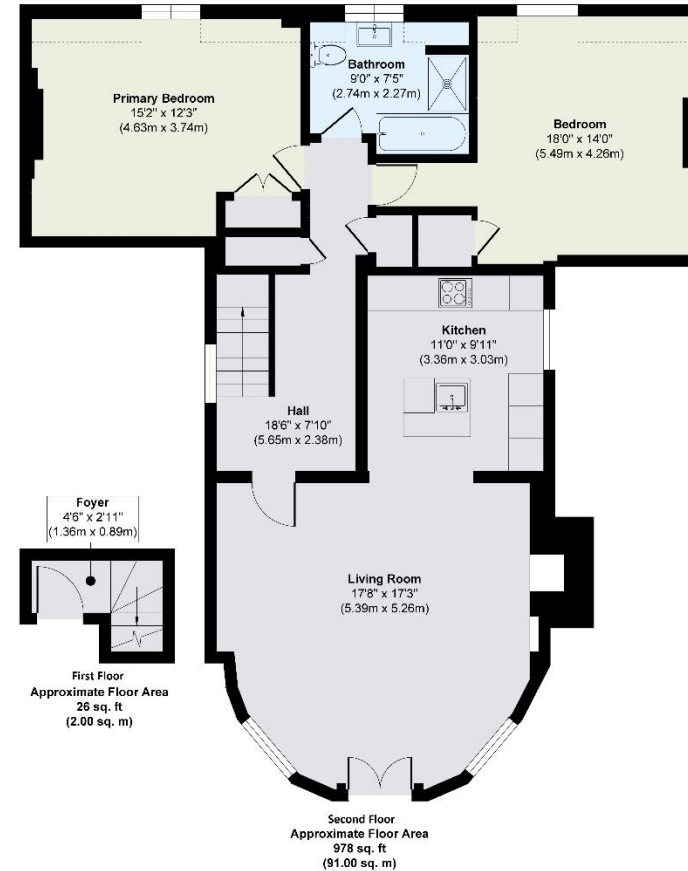
KEY INFORMATION

Local authority: Richmond Upon Thames

Internal area: 1,005 sq. ft. / 93 sq. m.

No. of bedrooms: 2

MORTLAKE HIGH STREET, SW14



Approx. Gross Internal Floor Area 1005 sq. ft / 93.00 sq. m

Illustration for identification purposes only, measurements are approximate, not to scale.
Produced by Elements Property