



Chelsea Harbour Chelsea SW10

A beautiful two bedroom apartment in Chelsea Harbour, one of Chelsea's prestigious developments.

At over a 1,000 sq. ft, the apartment comprises a large living space which leads out to a good size terrace with Harbour views. There is a well finished kitchen with ample storage space. The master bedroom benefits from fitted wardrobes and a large en-suite bathroom. There is a further double bedroom and family bathroom.

Chelsea Harbour is the home of the London Design Centre and close to the shops and restaurants of

Chelsea and Fulham. The famous King's Road is close by and within easy reach of Sloane Square and Knightsbridge shops. The development is located immediate to Imperial Wharf overground Station, and within easy reach of Fulham Broadway Underground Station. Thames Clippers next to the development provide regular and fast connections to key commuter hubs, including Canary Wharf, Tower Hill, London Bridge, Greenwich, Embankment and Waterloo.

KEY FEATURES

2 double bedrooms

2 bathrooms

Private terrace

Ample storage

Over 1,000 sq. ft. living space

Conveniently located close to shops, restaurants and public transport





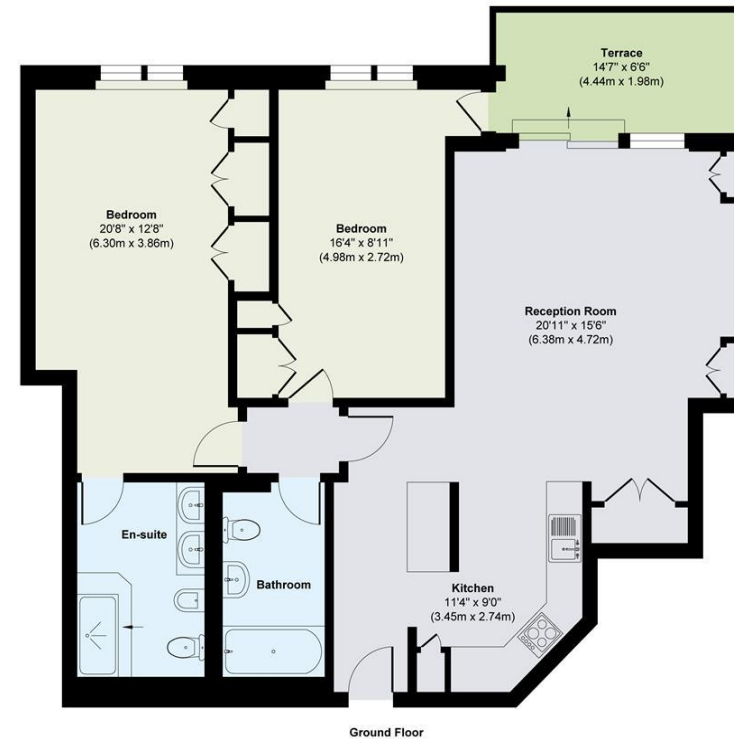
ENERGY PERFORMANCE CERTIFICATE

| Score | Energy rating | Current | Potential |
|-------|---------------|---------|-----------|
| 92+ | A | | |
| 81-91 | B | | |
| 69-80 | C | 79 C | 79 C |
| 55-68 | D | | |
| 39-54 | E | | |
| 21-38 | F | | |
| 1-20 | G | | |

KEY INFORMATION

| | |
|--------------------------|---|
| Local authority: | Royal Borough of Kensington and Chelsea |
| Internal area: | 1,044 sq. ft. / 96.99 sq. m. |
| Council tax band: | G |
| No. of bedrooms: | 2 |

Kings Quay, Chelsea Harbour SW10



Approx. Gross Internal Floor Area 1044 sq. ft / 96.99 sq. m

Illustration for identification purposes only, measurements are approximate, not to scale.