



Nine Elms Pier Nine Elms SW18

This early 1900s Humber Keel barge is moored at a secure residential location in Nine Elms Pier. The barge features a kitchen with wooden floors and fitted units, accessible by steps. Another flight of steps leads down to the lounge, which boasts a wood-burning stove and storage. The vessel includes two bedrooms and a bathroom.

The barge has been modernised by the current owners, enhancing its comfort and functionality. A secure underground parking space could be available.

Nine Elms is a dynamic area in southwest London, situated within the London Borough of Wandsworth and partially in Lambeth. Undergoing substantial regeneration, Nine Elms is evolving from a former industrial zone into a lively residential, commercial, and cultural centre. Key landmarks include the

refurbished Battersea Power Station, New Covent Garden Market, and the U.S. Embassy.

Transport Links:

Nine Elms boasts excellent transport connectivity. The extension of the Northern Line to Battersea Power Station and Nine Elms stations enhances access to central London, with regular services to major destinations such as the City and the West End. The area is also served by multiple bus routes, providing connections to nearby neighbourhoods and central London. The nearby Vauxhall station offers additional transport options, including National Rail services and the Victoria Line. Additionally, the Thames Clipper river bus service offers a scenic commuting option along the River Thames.

KEY FEATURES

Modernised Humber Keel barge

2 bedrooms

Ample storage

Wood-burning stove

Mooring charges: £12,500 per year approx.

Conveniently located close to shops, restaurants and public transport





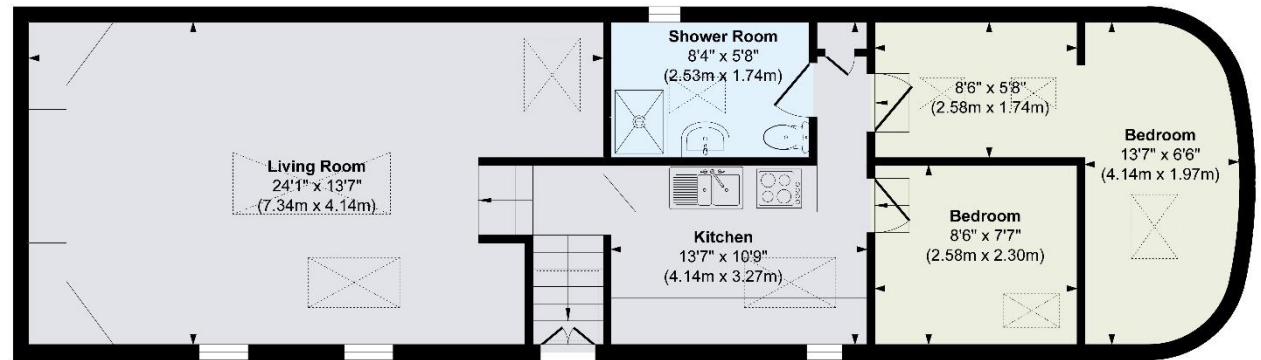
KEY INFORMATION

Local authority: London Borough of Wandsworth

Internal area: 682 sq. ft. / 63.32 sq. m.

Council tax band: A

No. of bedrooms: 2



Floor Plan