

RIVERHOMES

Blantyre Walk
Chelsea SW10

£2,925 per month
Furnished



RIVERHOMES

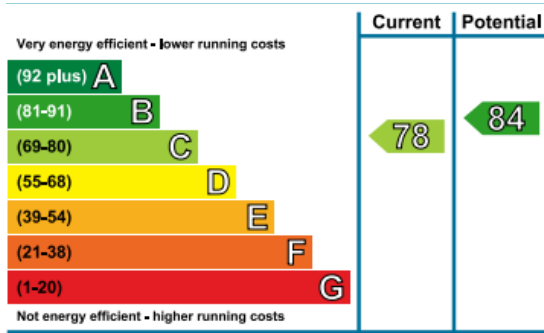
South West London Branch
1 – 3 Lower Richmond Road
London
SW15 1EJ

020 8789 9000
www.riverhomes.co.uk

Located on the first floor, this three bedroom apartment offers direct river views across Cheyne Walk and towards Albert Bridge. The accommodation comprises three double bedrooms, a bathroom, a kitchen/breakfast room and a good size reception room with access onto the balcony. The property is entered through raised communal gardens which typify this well managed and maintained estate.

The development is located close to Chelsea's Kings Road with its restaurants and fashion boutiques. Transport links are abundant.

ENERGY PERFORMANCE CERTIFICATE



KEY INFORMATION

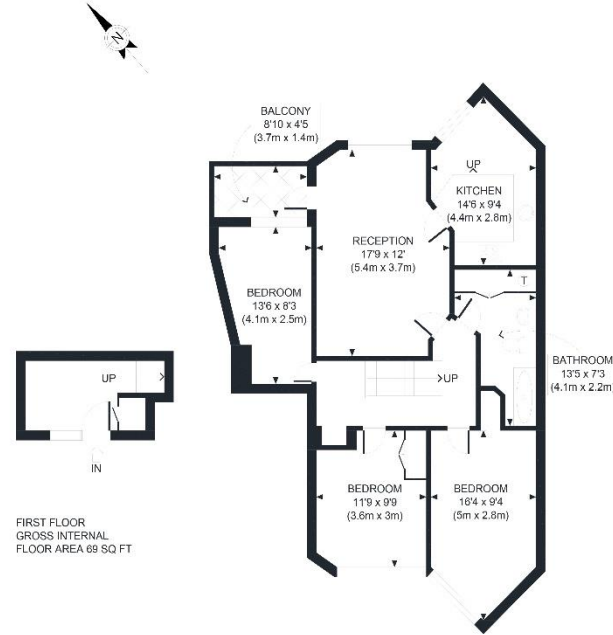
Local authority: Royal Borough of Kensington and Chelsea

Internal area: 912 sq. ft. / 85 sq. m.

Council tax band: D

No. of bedrooms: 3

No HMO Licence



SECOND FLOOR
GROSS INTERNAL FLOOR AREA 843 SQ FT

APPROX. GROSS INTERNAL FLOOR AREA 912 SQ FT / 85 SQM

Ref: Copyright **photoplan**

Disclaimer: Floor plan measurements are approximate and are for illustrative purposes only. While we do not doubt the floor plan accuracy and completeness, you or your advisors should conduct a careful, independent investigation of the property in respect of monetary valuation

