

RIVERHOMES20

Battersea Reach
Wandsworth SW18

£2,500 per month
Part furnished



Battersea Reach Wandsworth SW18

This impressive two bedroom, contemporary apartment is on the 6th floor of the ever popular Battersea Reach development and enjoys wonderful river views. The accommodation comprises a reception and dining area leading to a private riverside balcony, fully integrated kitchen, master bedroom with en suite shower room and fitted wardrobes, a second bedroom and family bathroom.

Battersea Reach benefits from a good selection of shops, cafes and restaurants nearby, along with 24 hour concierge service and residents gym.

Transport options include easy access to Wandsworth Town National Rail Station with regular services into Waterloo via Clapham Junction. There is also a wide choice of buses.

KEY FEATURES

Two double bedrooms

Two bathrooms

Private balcony

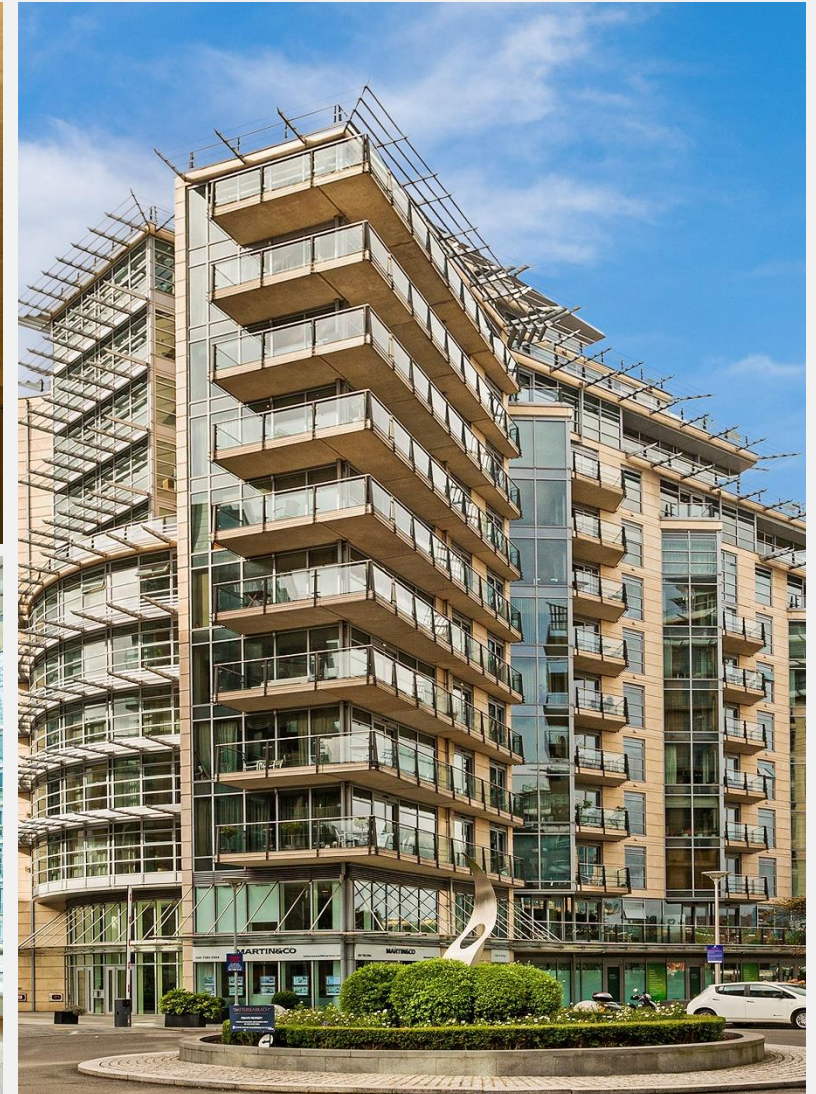
Fully integrated kitchen

River views

24-hour concierge service

Available from: 6th June 2024

Access to residents' gym





ENERGY PERFORMANCE CERTIFICATE

Energy Efficiency Rating

	Current	Potential
Very energy efficient - lower running costs		
(92 plus) A		
(81-91) B	84	86
(69-80) C		
(55-68) D		
(39-54) E		
(21-38) F		
(1-20) G		
Not energy efficient - higher running costs		

KEY INFORMATION

Local authority:	London Borough of Wandsworth
Internal area:	755 sq. ft. / 70.2 sq. m.
Garden area:	Balcony
No. of bedrooms:	2
Council tax band:	F

