

RIVERHOMES

Chelsea Harbour
Chelsea SW10

£100,000
Leisure Mooring



Chelsea Harbour Chelsea SW10

Hannah is a beautiful example of a Chris-Craft 45 Commander. You can board the aft deck of this classic style yacht from either the swim platform or by the ladder on the port side. This boat has been renovated internally and reconfigured. It feels spacious and is flooded with natural light. All the internal spaces offer excellent headroom which makes Hannah a pleasure to be aboard. Accommodation comprises two cabins and an en suite shower room to the master cabin. The living area has plenty of storage space and there are steps down to the kitchen area. The large wheelhouse on the upper deck leads directly out to a sun deck

which can be enjoyed all year round. Hannah is a great cruising boat as well as an attractive and spacious pied-à-terre. Chelsea Harbour brings the ambience of riverside life to a city that's always alive. The development is served by a new London Overground and National Rail Station, Imperial Wharf, providing direct rail links with Clapham Junction and Willesden Junction, as well as Southern services to Milton Keynes Central and East Croydon. There are TfL, bus services including, London Buses route C3, linking Chelsea Harbour with Earl's Court, Fulham and Clapham Junction.

KEY FEATURES

Two cabins with an en suite shower room to the master cabin.

Large wheelhouse on the upper deck

Great cruising boat as well as an attractive pied-à-terre

Recently internally renovated and reconfigured

Mooring and maintenance charges: £13,645 per year approx.

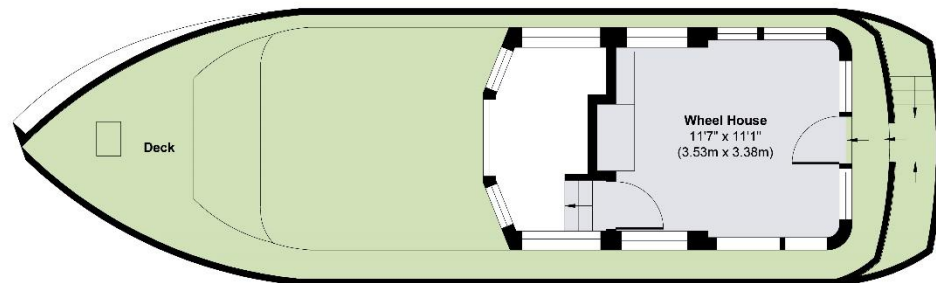




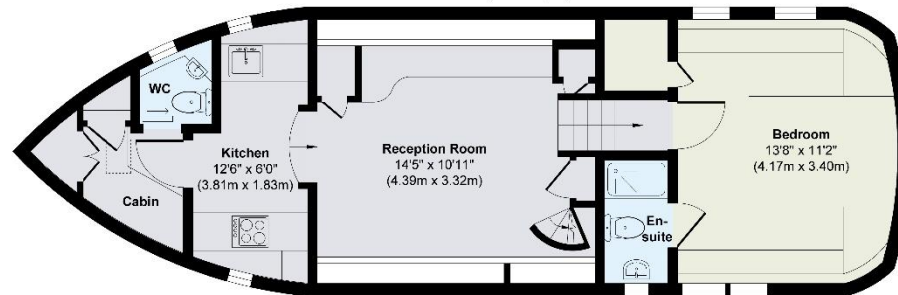
KEY INFORMATION

Local authority:	Royal Borough of Kensington and Chelsea
Internal area:	669 sq. ft. / 62.15 sq. m
Garden area:	Deck
No. of bedrooms:	2

Hannah, Chelsea Harbour SW10



Upper Deck
Approximate Floor Area
123 sq. ft
(11.45 sq. m)



Lower Deck
Approximate Floor Area
546 sq. ft
(50.70 sq. m)

Approx. Gross Internal Floor Area 669 sq. ft / 62.15 sq. m

Illustration for identification purposes only, measurements are approximate, not to scale.