

# RIVERHOMES

Chelsea Harbour  
Chelsea SW10

£110,000  
Leisure Mooring





## Chelsea Harbour Chelsea SW10

Hannah is a beautiful example of a Chris-Craft 45 Commander. You can board the aft deck of this classic style yacht from either the swim platform or by the ladder on the port side. This boat has been renovated internally and reconfigured. It feels spacious and is flooded with natural light. All the internal spaces offer excellent headroom which makes Hannah a pleasure to be aboard. Accommodation comprises two cabins and an en suite shower room to the master cabin. The living area has plenty of storage space and there are steps down to the kitchen area. The large wheelhouse on the upper deck leads directly out to a sun deck

which can be enjoyed all year round. Hannah is a great cruising boat as well as an attractive and spacious pied-à-terre. Chelsea Harbour brings the ambience of riverside life to a city that's always alive. The development is served by a new London Overground and National Rail Station, Imperial Wharf, providing direct rail links with Clapham Junction and Willesden Junction, as well as Southern services to Milton Keynes Central and East Croydon. There are TfL, bus services including, London Buses route C3, linking Chelsea Harbour with Earl's Court, Fulham and Clapham Junction.

### KEY FEATURES

**Two cabins with an en suite shower room to the master cabin.**

**Large wheelhouse on the upper deck**

**Great cruising boat as well as an attractive pied-à-terre**

**Recently internally renovated and reconfigured**

**Mooring and maintenance charges: £13,645 per year approx.**



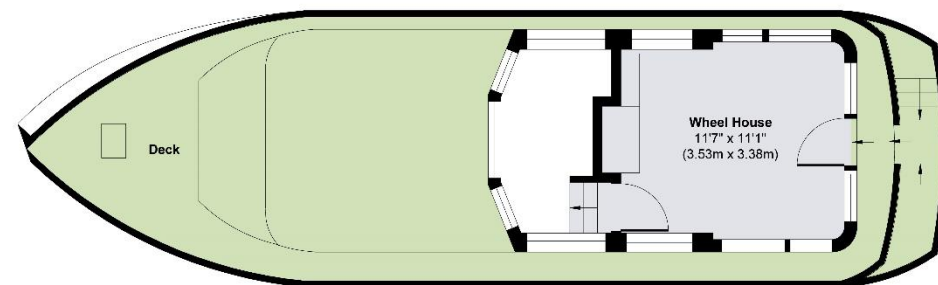




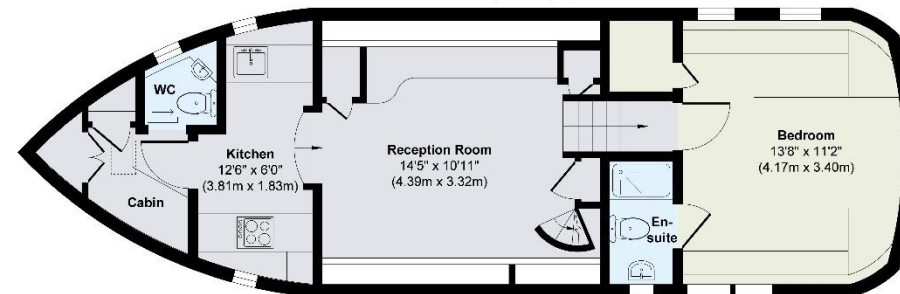
## KEY INFORMATION

<b>Local authority:</b>	Royal Borough of Kensington and Chelsea
<b>Internal area:</b>	669 sq. ft. / 62.15 sq. m
<b>Garden area:</b>	Deck
<b>No. of bedrooms:</b>	2

## Hannah, Chelsea Harbour SW10



Upper Deck  
Approximate Floor Area  
123 sq. ft  
(11.45 sq. m)



Lower Deck  
Approximate Floor Area  
546 sq. ft  
(50.70 sq. m)

**Approx. Gross Internal Floor Area 669 sq. ft / 62.15 sq. m**

Illustration for identification purposes only, measurements are approximate, not to scale.