

# RIVERHOMES

West India Quay  
Docklands E14

£6,933 per month  
Furnished





## West India Quay Docklands E14

An exceptional split level three bedroom apartment in a prestigious modern development on the water's edge of Canary Wharf. The apartment which is located on the 27th and 28th floors, is sunny throughout and offers triple aspect skyline and waterside views. At almost 2700sqft this apartment consists a fully integrated open plan kitchen, spacious reception area with vaulted ceiling and room to dine. The large master bedroom is equipped with walk in wardrobes and an ensuite bathroom. There is a good size second and third bedroom with fitted wardrobes. There is a mezzanine study or snug area a further family bathroom and cloakroom. The property is finished to a very high standard and benefits from a 24 hour concierge and underground parking. This iconic tower is located in Canary Wharf & only moments away from the West India DLR station and Canary Wharf(Jubilee) underground station.

### KEY FEATURES

**Three bedroom apartment**

**Triple aspect skyline and waterside views**

**Fully integrated open plan kitchen**

**Mezzanine study or snug area**

**24 hour concierge service**

**Secure underground parking**

**Council tax band H**

**Conveniently located close to shops,  
restaurants and public transport**





## ENERGY PERFORMANCE CERTIFICATE

Score	Energy rating	Current	Potential
92+	A		
81-91	B	87 B	88 B
69-80	C		
55-68	D		
39-54	E		
21-38	F		
1-20	G		

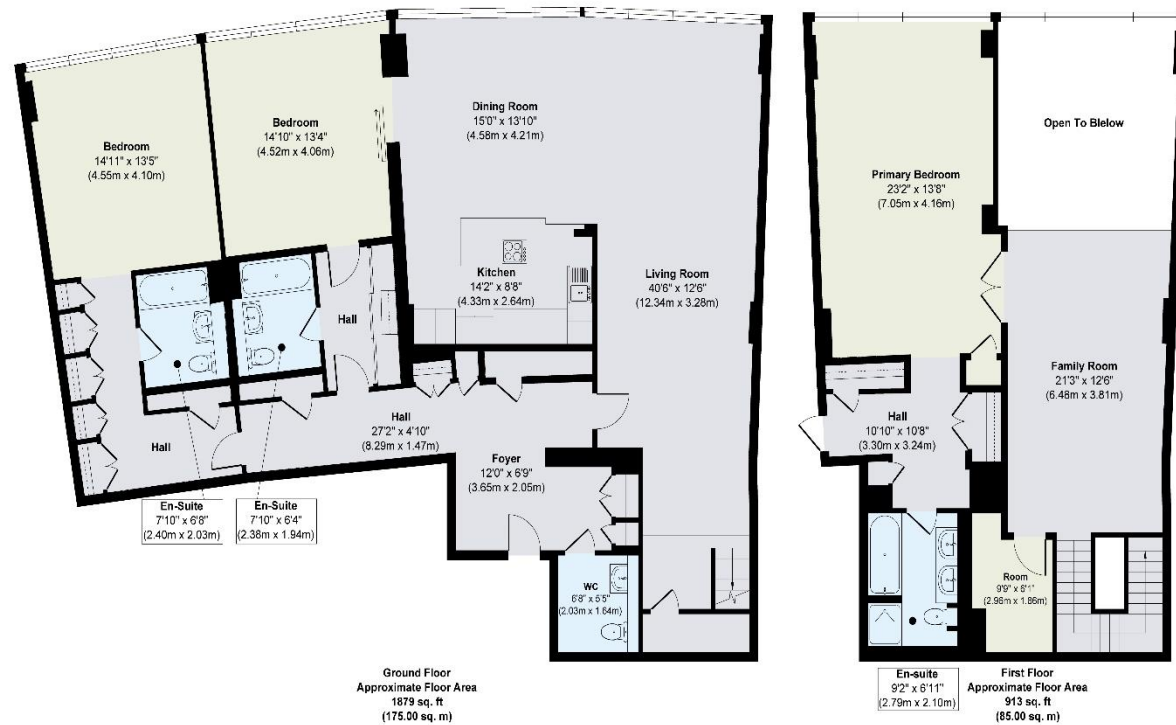
## KEY INFORMATION

**Local authority:** London Borough of Tower Hamlets

**Internal area:** 2,793 sq. ft. / 259 sq. m.

**No. of bedrooms:** 3

## WEST INDIA QUAY, E14



**Approx. Gross Internal Floor Area 2793 sq. ft / 259.00 sq. m**

Illustration for identification purposes only, measurements are approximate, not to scale.