

RIVERHOMES

**Riverside Plaza
Battersea SW11**

Offers in excess of
£600,000
Share of Freehold



Riverside Plaza Battersea SW11

This two bedroom, two bathroom apartment has an allocated underground parking space and uninterrupted views up and down the Thames from its private balcony. Located in Mendip Court in Batterseas' popular Riverside Plaza development, this second floor apartment benefits from a bright feel throughout. Features include a fitted kitchen and a master bedroom with en suite bathroom. Residents of this charming riverside community benefit from a porter service and a communal courtyard garden. Battersea Square's cafés and boutiques are less than a mile away, while the

restaurants and bars of Battersea Reach are very close too. The Gazette restaurant is next door and a chemist and Co-op are a few minutes stroll away. Transport links are plentiful and include the Thames Clipper which docks in front of the development and trains from Wandsworth Town or Clapham Junction stations. There is also a wide choice of buses.

KEY FEATURES

Two bedrooms

Two bathrooms

Private balcony

Porter service

Local authority : London Borough of Wandsworth

Council tax: Band G - £1,583.51 for 2023/24

Service charges: £6,000 per year

Lease length: 970 years remaining





ENERGY PERFORMANCE CERTIFICATE

Score	Energy rating	Current	Potential
92+	A		
81-91	B	86 B	86 B
69-80	C		
55-68	D		
39-54	E		
21-38	F		
1-20	G		

KEY INFORMATION

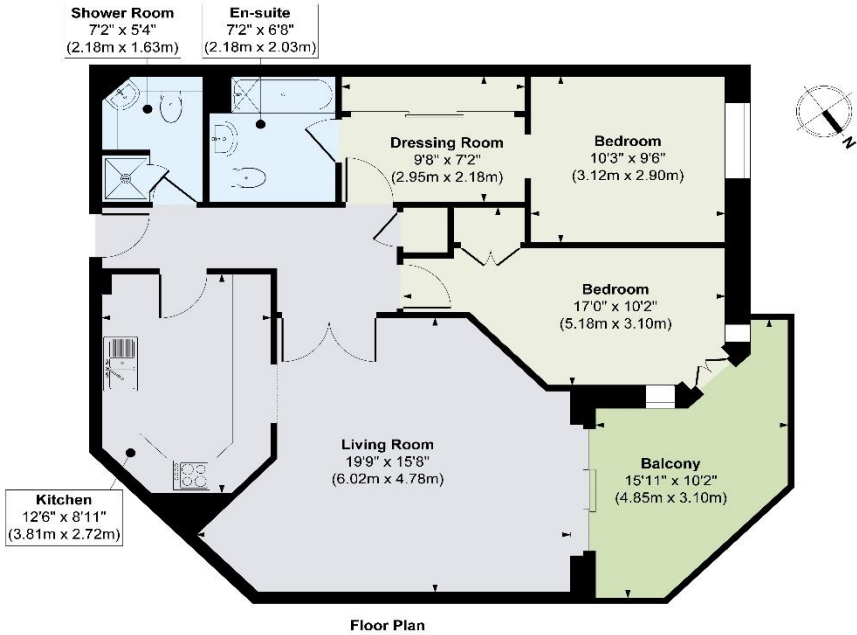
Local authority: London Borough of Wandsworth

Internal area: 907 sq. ft. / 84.26 sq. m.

Council tax band: G

No. of bedrooms: 2

RIVERSIDE PLAZA, BATTERSEA SW11



Approx. Gross Internal Floor Area 843 sq. ft / 78.31 sq. m

Illustration for identification purposes only, measurements are approximate, not to scale.

World Waterside Ltd trading as riverhomes for themselves and its clients give notice that 1: They are not authorised to make or give any representations or warranties in relation to the property either here or elsewhere, either on their own behalf or on behalf of their client or otherwise. 2: These particulars do not form part of any offer or contract and must not be relied upon as statements or representations of fact. Any areas, measurements or distances are approximate. The text, photographs and plans are for guidance only and are not necessarily comprehensive. 3: It should not be assumed that the property has all necessary planning, building regulation or other consents and any services, equipment or facilities have not been tested. 4: Lease details, service charges, ground rent (where applicable) and council tax are given as a guide only and should be checked and confirmed by your Solicitor prior to exchange of contracts. 5: They assume no responsibility and any intending purchasers or tenants must satisfy themselves by inspection or otherwise as to the correctness of each of the statements contained within these particulars. If you require clarification of any points please contact us.