



Zephyr Cheyne Walk Chelsea SW10

This is a brand new, 1800 sq ft, two bedroom houseboat moored on prestigious Cheyne Walk. Enjoying direct river views and split over two levels, this stylish floating home has two double bedrooms with en-suite bathrooms. The open plan dining/kitchen/living space provides direct access to the spacious sun deck which is perfect for entertaining. The fully integrated kitchen has a large range-style oven, induction hob, dishwasher, fridge and freezer. There is a separate utility/laundry room, a separate cloakroom and a store room.

There is air conditioning and climate control and the bathrooms have underfloor heating.

With all the comforts of a typical home such as direct mains electricity, water, sewerage, high speed WIFI, all residents of this charming mooring also benefit from a night watchman, CCTV service, concierge and an on-site maintenance team. Cheyne Walk is close to a number of transport options, the green spaces of Battersea Park and the shopping and leisure amenities of Kings Road and Sloane Square.

KEY FEATURES

Brand new houseboat

Two double bedrooms with dressing rooms

Two bathrooms

Spacious sun deck

Separate utility / laundry room

Separate cloakroom

High-speed wifi

Air conditioning and climate control

Mains electricity, water, sewerage

Night watchman and CCTV

Conveniently located close to restaurants, shops and public transport

Available: February 2024





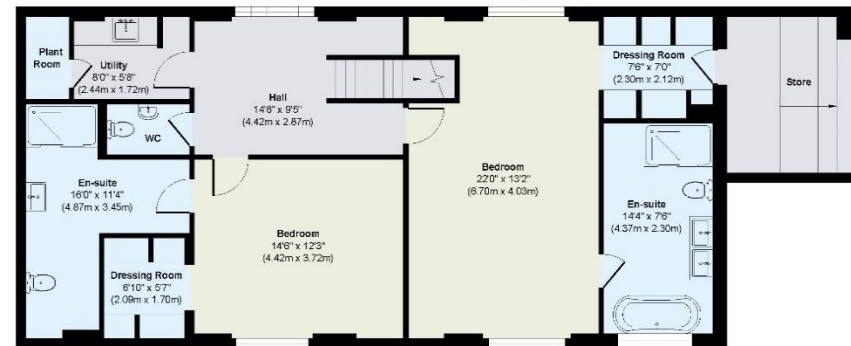
KEY INFORMATION

Local authority:	Royal Borough of Kensington and Chelsea
Internal area:	1,808 sq. ft. / 168.05 sq. m.
Garden area:	Deck
No. of bedrooms:	2

CHEYNE WALK, CHELSEA SW10



Upper Deck
Approximate Floor Area
662 sq. ft.
(61.58 sq. m)



Lower Deck
Approximate Floor Area
1146 sq. ft.
(106.47 sq. m)

Approx. Gross Internal Floor Area 1808 sq. ft / 168.05 sq. m

Illustration for identification purposes only, measurements are approximate, not to scale.