

RIVERHOMES

Imperial Wharf Marina
Fulham SW6

£900,000
Pied-a-terre mooring



Imperial Wharf Marina Fulham SW6

A truly spectacular 30 metre Luxemotor Dutch barge moored on the north bank of the River Thames at Imperial Wharf Moorings on the Chelsea/ Fulham border. Having been lovingly re-fitted and extended last year, the barge has been finished to the highest of yachting standards. These include teak framed windows, sky lights and a solid oak wood floor which stretches the entire length of the boat. The barge contains 3 cabins, 2 bathrooms and an amazing upper level with open plan, split level living area covering over 50 sq. meters. As she is permanently afloat, the large upper living room and the two outside decks (all purpose built solid teak furniture is included) offer unparalleled 360 deg views of the thames, and the large windows on the main floor offer exceptional light and views to fully appreciate the serenity of river living despite being in the heart of London. Viewing is strongly recommended to fully appreciate this high quality conversion.

Fortitude is also fitted with a working engine and a separate diesel boiler providing central heating and hot water throughout. The barge was last dry docked and surveyed in 2020, giving any potential purchaser peace of mind. Car Parking is available by separate arrangement. Electricity is metered and high speed fibre-optic broadband is connected. The nearby Imperial Wharf Station gives easy access to all London stations and the Thames Clipper river boats are a 2 minute walk away at Chelsea Design Centre, connecting the river from Greenwich to Putney

Perfect for anyone who needs a pied-a-terre bolthole in the centre of London, whilst maintaining one foot on the sea.

KEY FEATURES

30 metre Luxe-Motor Dutch barge

Three cabins, two bathrooms

Dry docked and surveyed in 2020

Finished to the highest standard

Amazing open plan, split level living area covering over 50 sq. meters

Solid oak wood flooring

Central heating

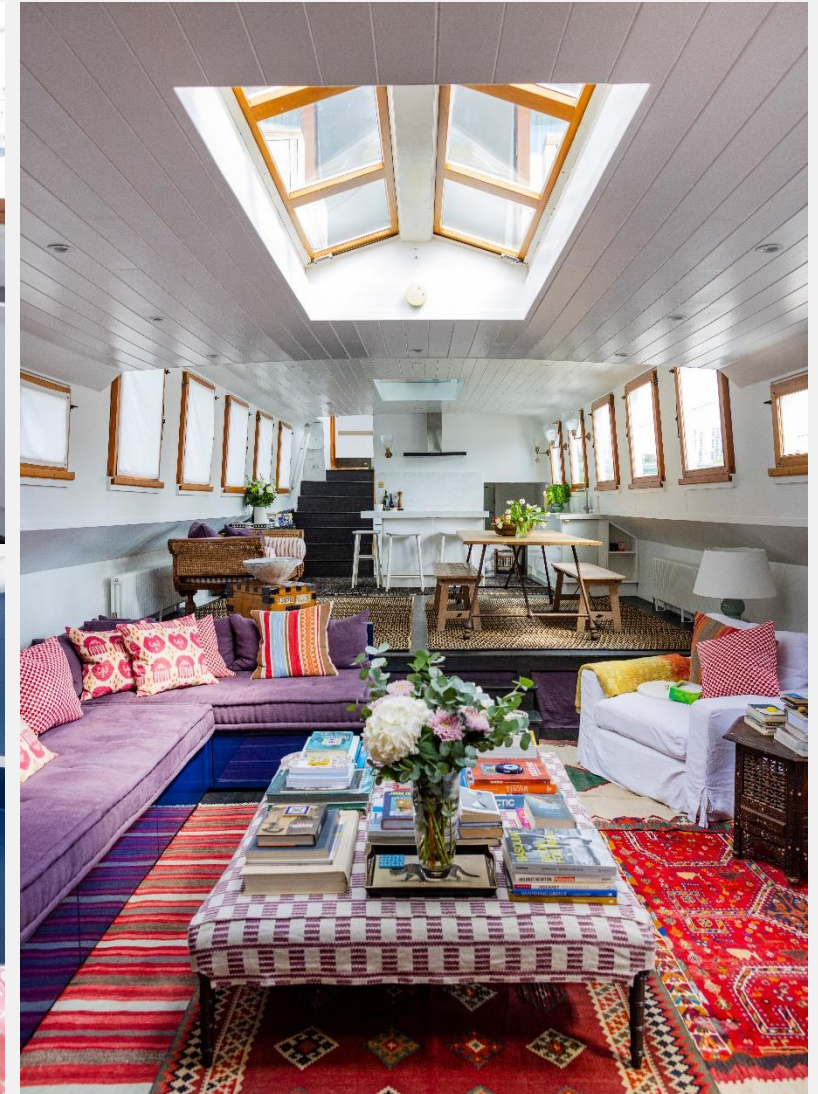
Local Authority: London Borough of Hammersmith and Fulham

Internal Area: 1,664 sq. ft. / 155 sq. m.

Mooring fee: £18,000 per annum. approx.

No stamp duty

Close to Imperial Wharf Overground station and you can catch the Thames Clipper boats close by

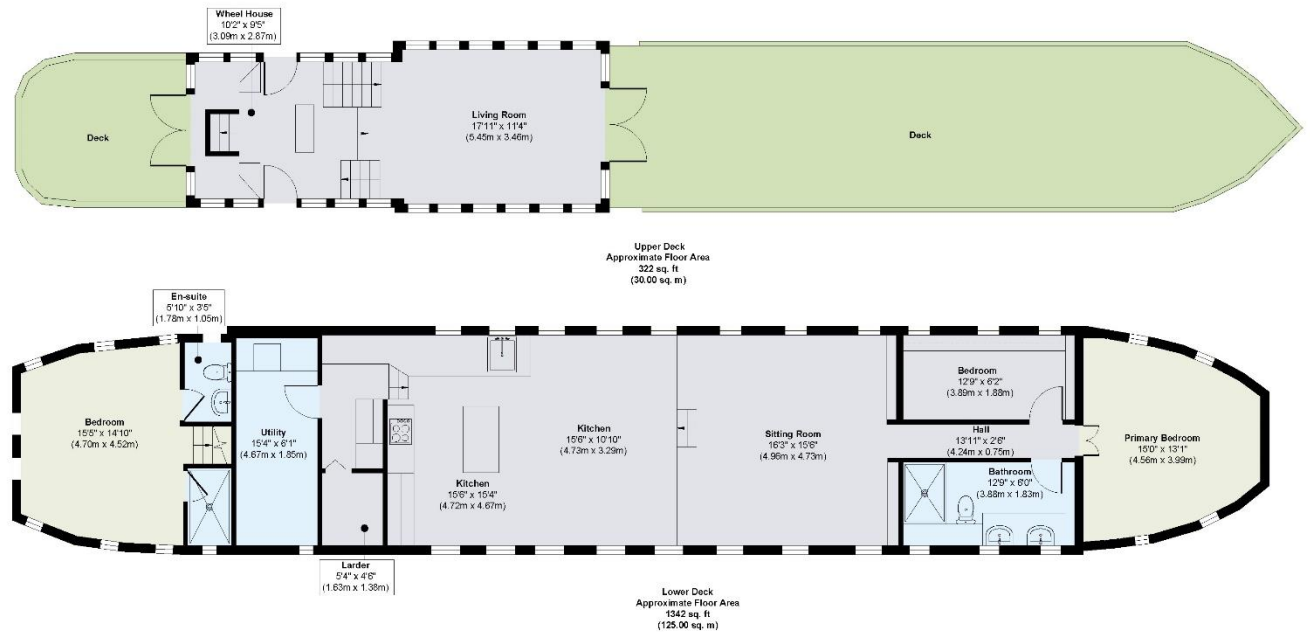




KEY INFORMATION

Local authority:	London Borough of Hammersmith and Fulham
Internal area:	1,664 sq. ft. / 155 sq. m.
Garden area:	Deck
No. of bedrooms:	3

FORTITUDE, IMPERIAL WHARF SW6



Approx. Gross Internal Floor Area 1664 sq. ft / 155.00 sq. m

Illustration for identification purposes only, measurements are approximate, not to scale.