



MYRTLE VILLA

PARK VILLA  
ENNISDALE

24

25

WHIRL 'N' TWIRL LAUNDERETTE

Lennox Street  
Weymouth, DT4 7HE

£850 PCM



# Lennox Street

Weymouth, DT4 7HE

- Available To Let NOW
- Long Term Let
- Two Bedrooms
- Central Location
- Moments Away From Weymouth Beach
- EPC - TBC
- Spacious Living Area
- Light and Airy Throughout
- Modern Kitchen
- Close to Weymouth Town Centre



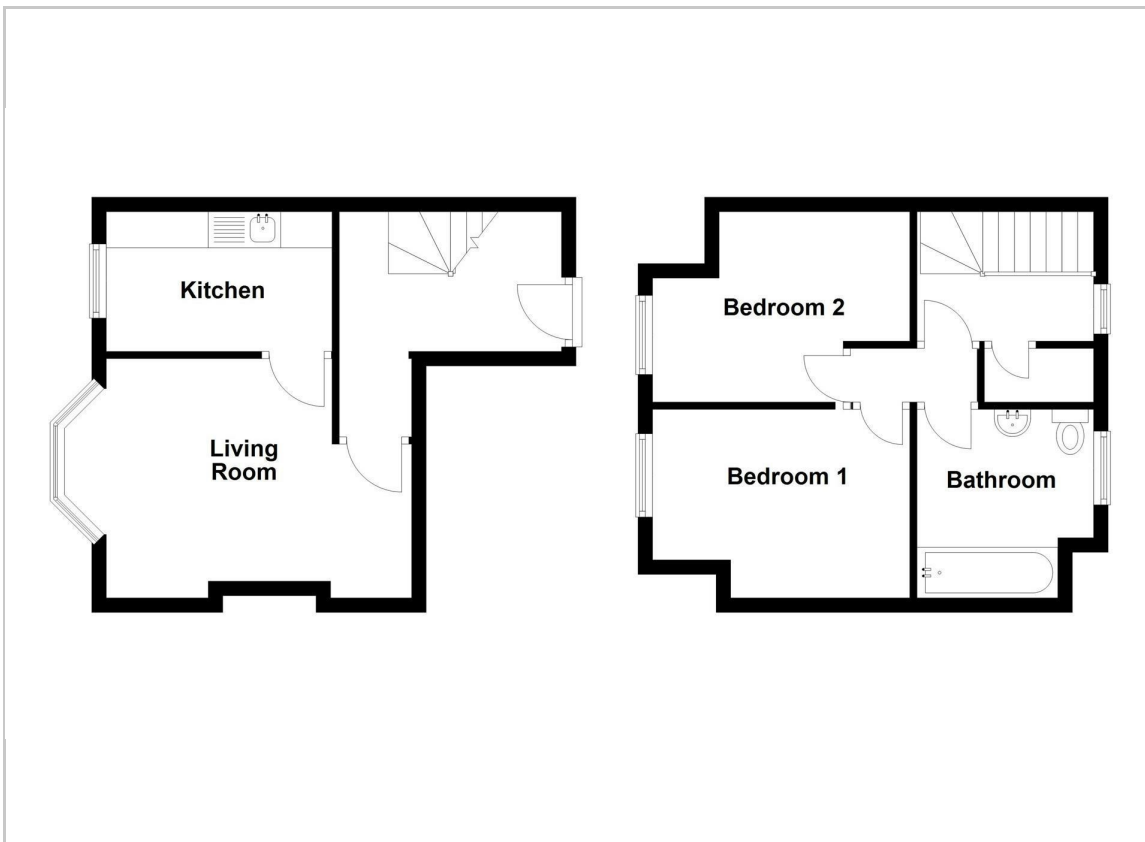
This spacious TWO BEDROOMED Duplex apartment is situated moments away from both WEYMOUTH BEACH and WEYMOUTH TOWN CENTRE. Ideal for those looking to be in a central location with the option to easily commute due to being only a level walk from WEYMOUTH TRAIN STATION.

Upon entering the property you are greeted with a FRESHLY DECORATED hallway complimented by a large chandelier and new carpets. Carrying on through to the left of the hallway, you will find yourself in the LARGE LIVING SPACE boasting a BAY WINDOW to the front that

allows natural light to beam through and create a warm and inviting atmosphere. The door to the right of the living area leads to the MODERN KITCHEN with plenty of space for electrical appliances.

Upstairs comprises two double bedrooms, bathroom and airing cupboard. Both Bedrooms benefit from front aspect windows which allow light to stream in for the majority of the day. The bathroom comprises bath, WC and pedestal wash hand basin.

This property is available UNFURNISHED and is ready to move into.



**Living Room**  
16'7" x 9'11" (5.07 x 3.03)

**Kitchen**  
11'3" x 6'3" (3.44 x 1.93)

**Bedroom one**  
11'7" x 8'4" (3.55 x 2.55)

**Bedroom two**  
11'7" x 8'11" (3.55 x 2.72)



Energy Efficiency Rating		
	Current	Potential
<i>Very energy efficient - lower running costs</i>		
(92 plus) <b>A</b>		
(81-91) <b>B</b>		
(69-80) <b>C</b>		
(55-68) <b>D</b>		
(39-54) <b>E</b>		
(21-38) <b>F</b>		
(1-20) <b>G</b>		
<i>Not energy efficient - higher running costs</i>		
<b>England &amp; Wales</b>	EU Directive 2002/91/EC	

Environmental Impact (CO <sub>2</sub> ) Rating		
	Current	Potential
<i>Very environmentally friendly - lower CO<sub>2</sub> emissions</i>		
(92 plus) <b>A</b>		
(81-91) <b>B</b>		
(69-80) <b>C</b>		
(55-68) <b>D</b>		
(39-54) <b>E</b>		
(21-38) <b>F</b>		
(1-20) <b>G</b>		
<i>Not environmentally friendly - higher CO<sub>2</sub> emissions</i>		
<b>England &amp; Wales</b>	EU Directive 2002/91/EC	