



**BEACH HUT, Portland Bill**

Portland, DT5 2JT

**Asking Price £50,000**



# Portland Bill

Portland, DT5 2JT

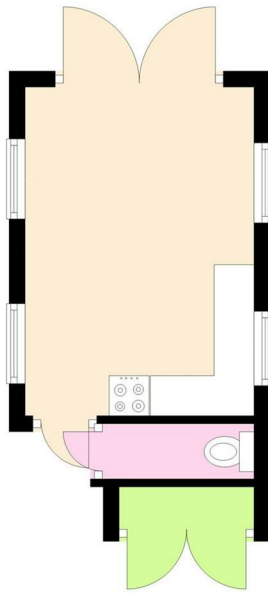
- Timber Beach Hut
- Moments From The Water's Edge
- Measures Approximately 13'4" x 9'4"
- Situated At Portland Bill
- External Store
- Sea Views
- Short Stroll to Lobster Pot Café and other amenities
- Offered With Furnishings
- Vehicle Access
- Desirable Position





A well maintained timber BEACH HUT Close to Coastal Path & Walks at PORTLAND BILL. The Hut Measures approximately 13'4" x 9'4". Internally the current owner has the hut laid out with a kitchen area, and living space with a sofa bed. There is also a separate room currently arranged with a chemical WC.





### **Hut Area**

13'4" x 9'4" (4.06m x 2.84m)

With Kitchenette and Living Space.

### **Future Sales**

Should you re-sell the hut, a transfer fee of 15% of the final sale price is payable to the Field Owner.

### **Planning**

Any hut alterations, extensions or reconstructions are subject to the relevant planning permission and the site owners permission.

### **Council Tax**

Nil (2023/2024) - currently benefiting from small business rate relief

### **Licence**

Beach Huts are held on an Annual Licence  
£485.00 per annum (2023/2024)

### **Disclaimer**

These particulars, whilst believed to be accurate are set out as a general outline only for guidance and do not constitute any part of an offer or contract. Intending purchasers should not rely on them as statements of representation of fact, but must satisfy themselves by inspection or otherwise as to their accuracy. All measurements are approximate. Any details including (but not limited to): lease details, service charges, ground rents, property construction, services, & covenant information are provided by the vendor and you should consult with your legal advisor/ satisfy yourself before proceeding. No person in this firms employment has the authority to make or give any representation or warranty in respect of the property.

