

70 Fortuneswell  
Portland, DT5 1LZ

 3  1  1  F

Hull  
Gregson  
Hull  
01305 922222  
www.hullg.co.uk  
FOR SALE

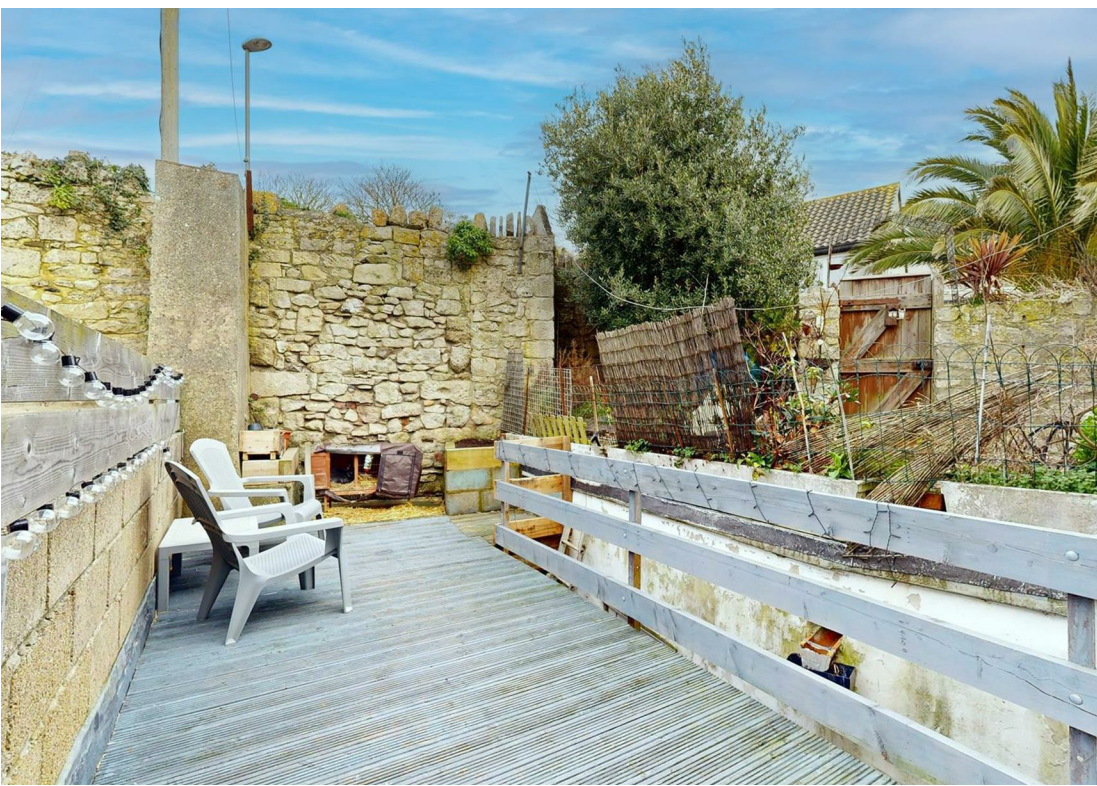
Offers In Excess Of  
£190,000 Freehold

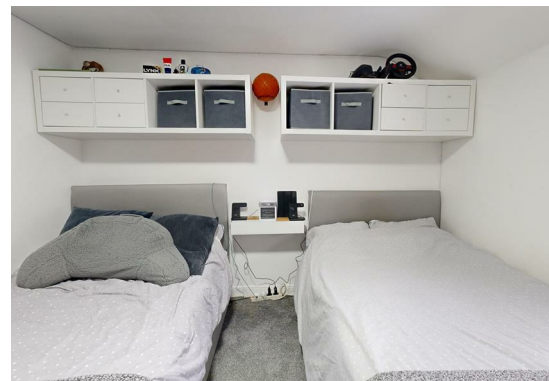


# Fortuneswell

Portland, DT5 1LZ

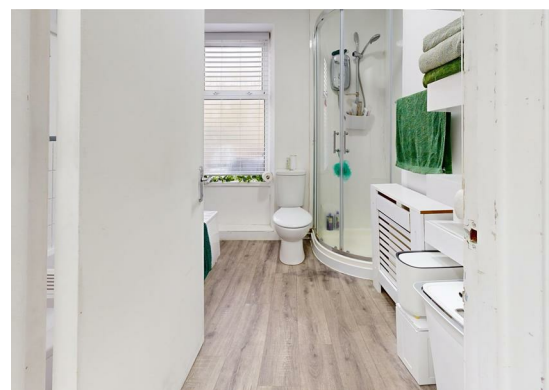
- Three Double Bedrooms
- Decked First Floor Roof Garden
- Spacious Accommodation
- Three Storey Terraced House
- Moments from Amenities
- Additional Ground Floor Rear Courtyard
- Double Glazing
- Short Stroll to Chesil beach
- Ideal First Time Buy or Investment Purchase
- Some Integrated Appliances



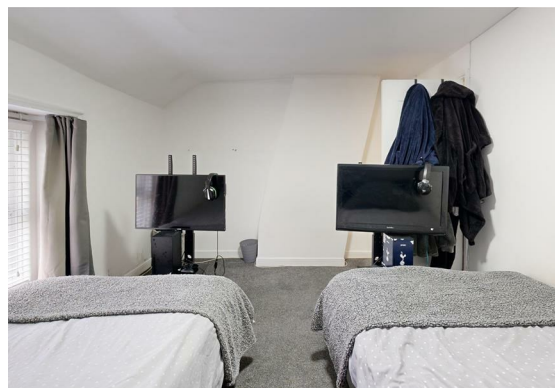


Conveniently situated in the heart of Fortuneswell, just a stones throw from local amenities and Chesil Beach is this well presented THREE DOUBLE bedroom mid terraced house. set over three floors.

The ground floor of this home is occupied by a light and spacious, neutrally decorated living room boasting gas fire, ample space for furniture and a door out to a yard. A door leads through to a fitted kitchen with ample wall and base units, space for under counter fridge and freezer and washing machine in addition to a fitted oven and hob.



Stairs rise to the first floor to provide



access into the largest of the three bedrooms, this room occupies the front of the property and enjoys floor to ceiling fitted wardrobes. To the rear is the a family bathroom with both separate bath and shower cubicle as well as a door leading to the low maintenance roof terrace.

The remaining two double rooms can be found on the second floor, both light and bright rooms with ample space for bedroom furniture.





**LOUNGE/DINING ROOM**  
23'9" x 11'2" (7.24m x 3.40m)

**KITCHEN**  
15'8" x 5'6" (4.78m x 1.68m)

**MASTER BEDROOM**  
11'6" x 13'3" (3.51m x 4.04m)

**BEDROOM TWO**  
11'8" x 10'5" (3.56m x 3.18m)

**BEDROOM THREE**  
11'9" x 10'5" (3.58m x 3.18m)

**OUTSIDE**

First Floor Roof Garden: 18'9" x 7'0" (5.72m x 2.13m) Small decked seating area

**Additional information**

The following details have been provided by the vendor, as required by Trading Standards. These details should be checked by your legal representative for accuracy.

Property type: Terraced House

Property construction: Standard Construction

Mains Electricity

Mains Water & Sewage: Supplied by Wessex Water

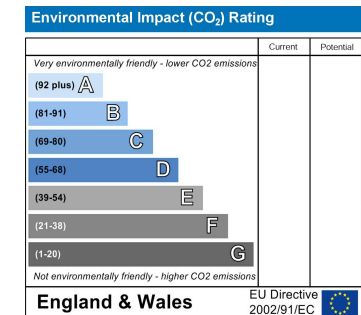
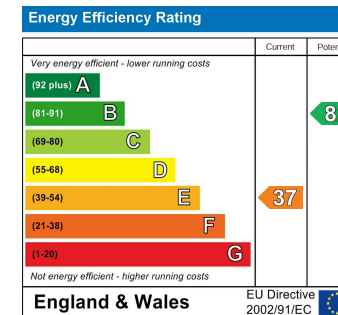
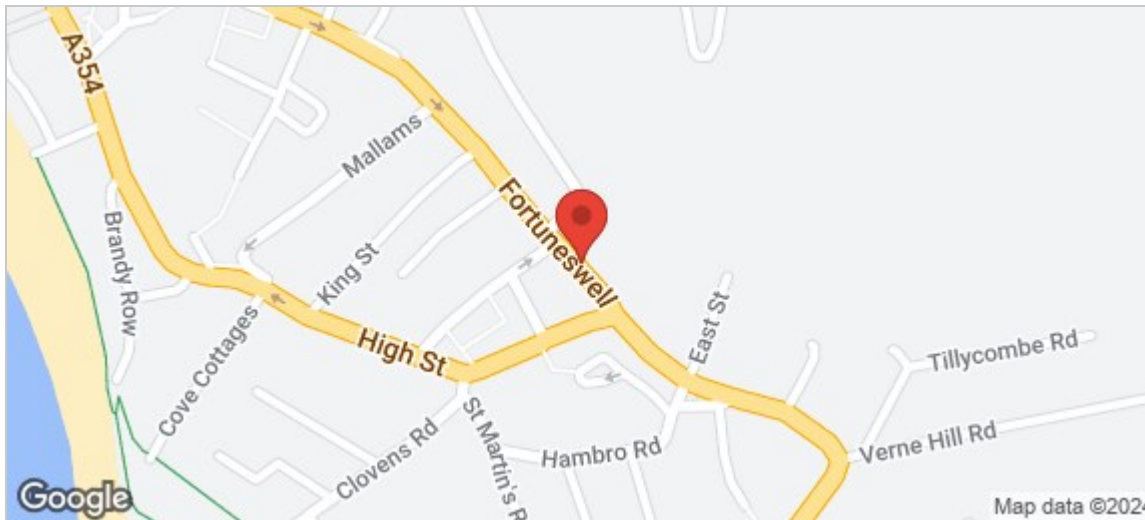
Heating Type: Gas

Broadband/Mobile signal/coverage: For further details please see the Ofcom Mobile Signal & Broadband checker.

checker.ofcom.gov.uk/

**Disclaimer**

These particulars, whilst believed to be accurate are set out as a general outline only for guidance and do not constitute any part of an offer or contract. Intending purchasers should not rely on them as statements of representation of fact, but must satisfy themselves by inspection or otherwise as to their accuracy. All measurements are approximate. Any details including (but not limited to): lease details, service charges, ground rents, property construction, services, & covenant information are provided by the vendor and you should consult with your legal advisor/ satisfy yourself before proceeding. No person in this firms employment has the authority to make or give any representation or warranty in respect of the property.



These particulars, whilst believed to be accurate are set out as a general outline only for guidance and do not constitute any part of an offer or contract. Intending purchasers should not rely on them as statements of representation of fact, but must satisfy themselves by inspection or otherwise as to their accuracy. No person in this firms employment has the authority to make or give any representation or warranty in respect of the property.