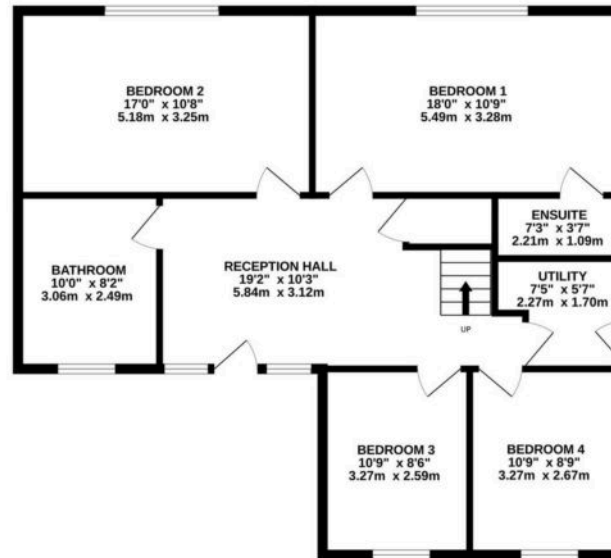




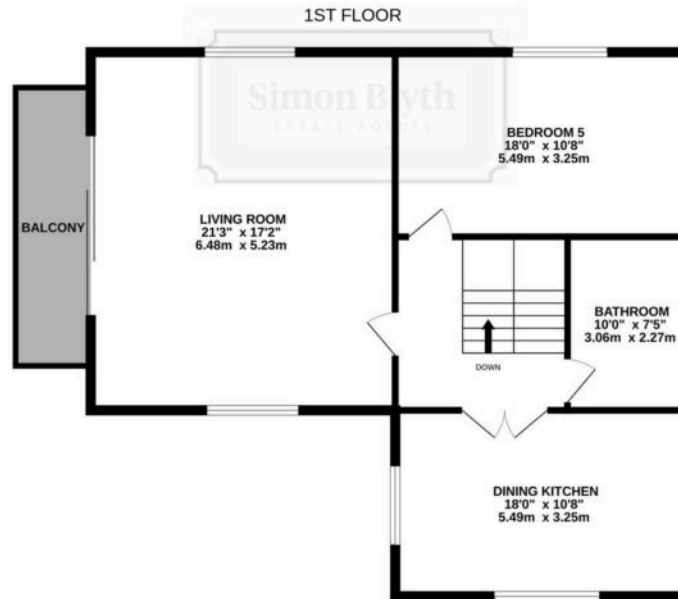
18 Cliffe End Road, Quarmby
Huddersfield

Offers in Region of **£625,000**

GROUND FLOOR



1ST FLOOR



CLIFFE END ROAD

Whilst every attempt has been made to ensure the accuracy of the floorplan contained here, measurements of doors, windows, rooms and any other items are approximate and no responsibility is taken for any error, omission or mis-statement. This plan is for illustrative purposes only and should be used as such by any prospective purchaser. The services, systems and appliances shown have not been tested and no guarantee as to their operability or efficiency can be given.
Made with Metropix ©2025



18 Cliffe End Road

Quarmby, Huddersfield

Set back from Cliffe End Road and approached down a long driveway which opens out to provide off road parking for several is this five double bedroom detached family house with inverted accommodation and magnificent south westerly views stretching down the Colne Valley. The property is located within a popular and convenient residential area close to local shops, schools and just a short drive from J23 and J24 of the M62. There is a gas central heating system, pvcu double glazing, security alarm and briefly comprising to the ground floor reception hall, four double bedrooms with master en suite, bathroom and utility room. First floor landing leading to bathroom two, bedroom five large dual aspect fitted dining kitchen and stunning triple aspect living room with magnificent views over the Colne Valley through large patio doors which open onto a balcony. Externally in addition to ample off road parking there is a single garage, useful garden store and gardens laid out to both front and rear.



Reception Hall

19' 2" x 10' 3" (5.84m x 3.12m)

As the dimensions indicate this is a spacious and welcoming area with composite and frosted double glazed door with pvcu frosted double glazed windows to either side providing additional natural light, there are two ceiling light points, central heating radiator, laminate flooring and a splindled return staircase rising to the first floor with useful storage cupboard beneath. From the reception hall access can be gained to the following rooms..-

Bedroom One

18' 0" x 10' 9" (5.49m x 3.28m)

A large double room which has a pvcu double glazed window looking out over the rear garden and with fabulous views beyond. The window also incorporates fitted electrically controlled security shutters. There are two ceiling light points, central heating radiator and to one side a door gives access to an en suite shower room.

En Suite Shower Room

7' 3" x 3' 7" (2.21m x 1.09m)

With a frosted pvcu double glazed window, ceiling light, extractor fan, part tiled walls which are floor to ceiling in sections, tiled floor, chrome ladder style heated towel rail and fitted with a suite comprising vanity unit incorporating circular hand wash basin with chrome monobloc tap, low flush WC and corner shower cubicle Triton electric shower fitting.

Bedroom Two

17' 0" x 10' 8" (5.18m x 3.25m)

Once again this is a large double room situated adjacent to bedroom one and looking out over the rear garden with fabulous views beyond, there are fitted electrically controlled security shutters, two ceiling light points and central heating radiator.



Bathroom One

10' 0" x 8' 2" (3.05m x 2.49m)

With a frosted pvcu double glazed window, ceiling light, extractor fan, part tiled walls, tiled floor, central heating radiator, chrome ladder style heated towel rail, shaver socket and fitted with a suite comprising free standing slipper bath resting on ball and claw feet with chrome mixer tap incorporating hand spray, vanity unit incorporating wash basin with chrome monobloc tap together with mirror over with display shelving and pelmet down lighters, low flush WC with concealed system and walk in shower with glazed side panel and chrome shower fitting incorporating fixed shower rose and separate hand spray.

Bedroom Three

10' 9" x 8' 6" (3.28m x 2.59m)

A double room with pvcu double glazed window looking out over the front garden, there is a ceiling light point and central heating radiator.

Bedroom Four

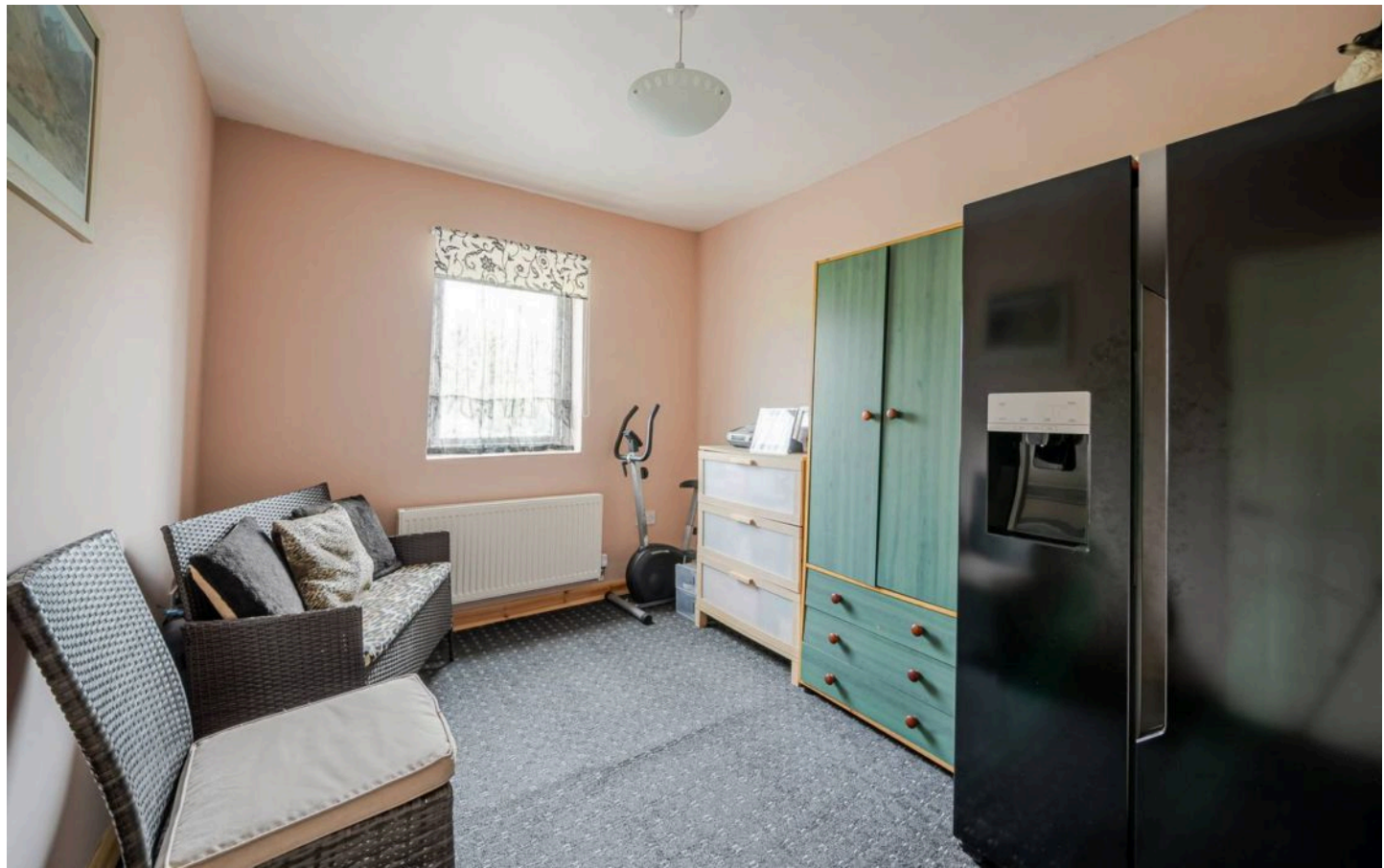
10' 9" x 8' 9" (3.28m x 2.67m)

A double room situated adjacent to bedroom three and having a pvcu double glazed window looking down the drive, there is a ceiling light point and central heating radiator.

Utility Room

7' 5" x 5' 7" (2.26m x 1.70m)

With frosted pvcu double glazed window, composite frosted double glazed door, worktop mounted with a circular hand wash basin with chrome monobloc tap, beneath there is a space for washing machine and tumble dryer, there is a wall mounted Potterton gas fired central heating boiler with separate modern hot water storage cylinder.





First Floor Landing

With ceiling light point, central heating radiator, laminate flooring and loft access. From here access can be gained to the following rooms..-

Bedroom Five

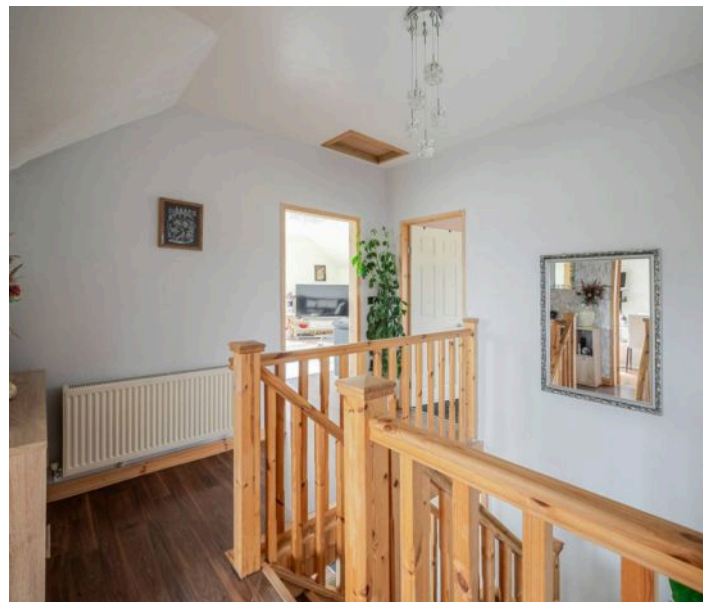
18' 0" x 10' 8" (5.49m x 3.25m)

Another large double bedroom which has pvcu double glazed window looking out over the rear garden enjoying some fabulous far reaching views. There are two ceiling light points and central heating radiator.

Bathroom Two

10' 0" x 7' 5" (3.05m x 2.26m)

With ceiling light, frosted pvcu double glazed window, extractor fan, central heating radiator, part tiled walls, tile effect flooring central heating radiator, shaver socket and fitted with a suite comprising double ended bath with chrome mixer tap, glazed side panel and chrome shower fitting incorporating fixed shower rose and separate hand spray, vanity unit incorporating wash basin with chrome monobloc tap with mirror over with display shelving and pelmet down lighters and low flush WC with concealed system.



Dining Kitchen

18' 0" x 10' 8" (5.49m x 3.25m)

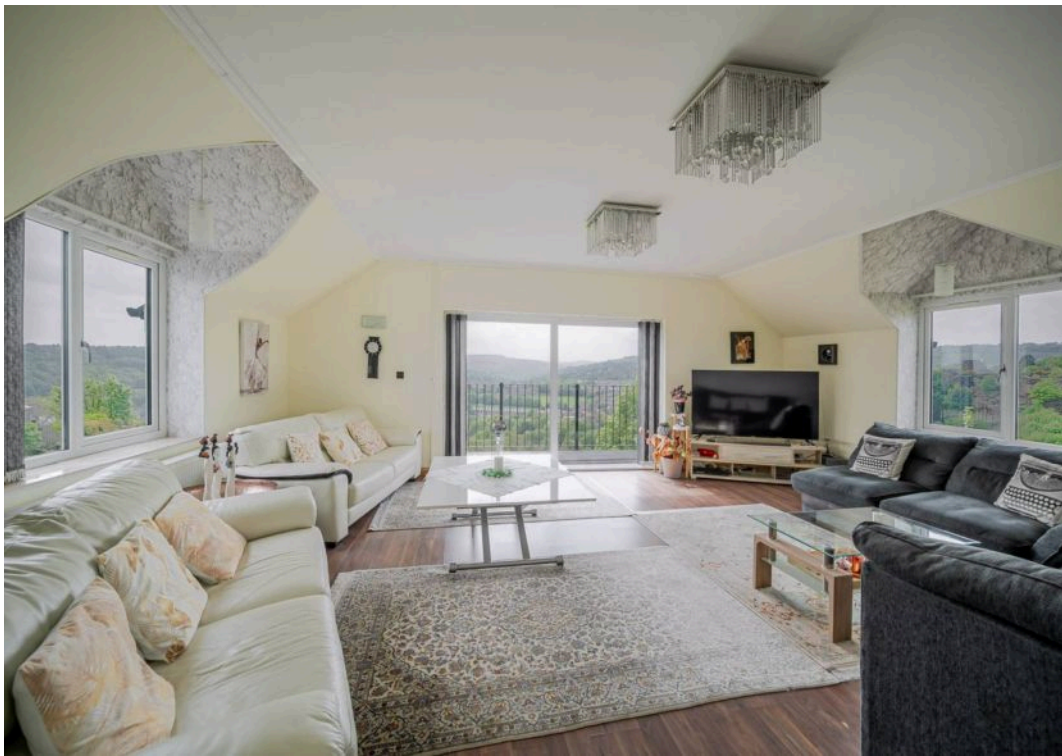
This is approached through twin timber and glazed doors and has a pvcu double glazed window to the front elevation and a pvcu double glazed window to the side elevation with views looking down the Colne Valley. There are inset ceiling down lighters, ceiling light point, central heating radiator, tiled floor and fitted with a range of white shaker style base cupboards and drawers with contrasting timber effect wall cupboards, tiled splash backs, overlying worktops inset 1 1/2 bowl single drainer stainless steel sink with chrome monobloc tap, five ring stainless steel gas hob with stainless steel extractor hood over, stainless steel electric fan assisted oven, integrated dishwasher, to one side there are fitted there are fitted cupboards and drawers with a worktop extending to form a breakfast bar with concealed lighting beneath the wall cupboards.

Living Room

21' 3" x 17' 2" (6.48m x 5.23m)

This stunning room is all the more impressive being located on the first floor and as such taking full advantage of some magnificent views stretching down the Colne Valley through pvcu double glazed sliding patio doors which open onto a balcony. These have externally controlled security shutters. In addition there is further natural light from pvcu double glazed windows to both front and rear elevations. There are two ceiling light points, wall light point, two central heating radiators and laminate flooring.





GARDEN

The front garden comprises lawn with planted trees, flowers and shrubs around the borders, there is an ornamental pond and magnificent far reaching southwesterly views down the Colne Valley. To the left hand side of the property there is a pathway leading to the rear garden. To the right hand side of the property there is a covered walk way with access to the utility room, outside cold water tap and useful twin door garden store with light and power. Beyond the walk way there is an ornamental tiled pond with water feature and planted beds and this gives access to the rear and incorporates a shaped lawn, patio, planted trees and shrubs and once again stunning south westerly facing views stretching down the Colne Valley.

Garage

The property is set back from Cliffe End Road and approached through twin gates onto a long tarmac driveway which opens out in front of the property and provides off road parking for several vehicles and in turn giving access to a single garage to one side. Garage is 18'5" x 9'3" with up and over door, pvcu and double glazed courtesy door to one side, there is also power and light.





USING SATELLITE NAVIGATION ENTER POSTCODE HD3 4FF

THE PROPERTY HAS 2 ZONE GAS FIRE CENTRAL HEATING SYSTEM WITH SEPARATE HOT WATER GAS CYLINDER CONTROLLED INDEPENDANTLY

VIEWING For an appointment to view, please contact the Huddersfield Office on 01484 651878

BOUNDARY OWNERSHIP The boundary ownerships and tenure of the property have not been checked on the title deeds for any discrepancies or rights of way if any (This is a standard statement on all our brochures due to the Property Misdescription's Act)

COPYRIGHT Unauthorised reproduction prohibited.

FREE VALUATIONS If you are thinking of a move then take advantage of our FREE valuation service, telephone our nearest office for a prompt and efficient service.

CONSUMER PROTECTION FROM UNFAIR TRADING REGULATIONS 2008 Simon Blyth for themselves and for the vendors or lessors of this property, whose agent they are, have made every effort to ensure the details given have been prepared in accordance with the above act and to the best of our knowledge give a fair and reasonable representation of the property. Please note:

1. There is a six inch measurement tolerance or metric equivalent and the measurements given should not be entirely relied upon and purchasers must make their own measurements if ordering carpets, curtains or other equipment.
2. None of the main services, i.e. gas, water, electricity, drainage or central heating system (if any) have been tested in any way whatsoever. This also includes appliances which are to be left in situ by the vendors.

PURCHASERS MUST SATISFY THEMSELVES AS TO THE CONDITION AND EFFECTIVENESS OF ANY SUCH APPLIANCES OR SERVICES FLOOR PLANS NOT TO SCALE – FOR IDENTIFICATION PURPOSES ONLY.

MAILING LIST Keep up to date with all our new properties. Let us know your price range, the area and type of home you require by registering on our mailing list.

MORTGAGE ADVICE Simon Blyth Estate Agents understand that getting appropriate mortgage advice is a crucial part of the home buying process. Finding a suitable mortgage has always been something of a daunting experience which is why we would like to introduce you to our independent mortgage advisors. They provide tailored mortgage solutions through a wealth of experience in the mortgage and property market and offer access to the full unrestricted range of products available. Our advisors are dedicated to providing ongoing guidance and advice throughout the entire house purchase process keeping you, your estate agent and solicitor involved with continual updates on the progress. Once in your new home they will be available for ongoing support to build a long term relationship for your future mortgage planning. Your home may be repossessed if you do not keep up repayments on your mortgage. For friendly expert advice on your mortgage requirements, or to discuss the potential of making your ideas a reality then please call in or phone for a chat.

OFFICE OPENING TIMES 7 DAYS A WEEK Monday to Friday – 8:45 am to 5:30 pm Saturday – 9:00 am – 4:00 pm Sunday – 11:00 am – 2:00 pm



Simon Blyth Estate Agents

Simon Blyth Estate Agents, 26 Lidget Street – HD3 3JP

01484 651878

huddersfield@simonblyth.co.uk

www.simonblyth.co.uk/

Wakefield	Huddersfield	Holmfirth	Kirkburton	Penistone	Sheffield	Barnsley	Pontefract	Leeds	Halifax
01924 361631	01484 651878	01484 689689	01484 603399	01226 762400	01143 216 590	01226 731730	01977 800259	0113 4689331	01422 417000