



Local to you - contactable when you need us

 **KMJProperty**
Your local independent Estate Agent

Hedge Barton, Fordcombe, Tunbridge Wells

Offers In Region Of £150,000

🛏 2 🚿 1 🚿 1



Situated in the Hedge Barton development in Fordcombe, this bright and generously proportioned home offers a superb blend of countryside living and comfort, exclusively for residents aged 50 and over.

As you approach the property, you are met by a private driveway and steps leading up to the entrance, setting the tone for this well-positioned and welcoming park home.

Inside, you're greeted by a welcoming entrance hall. Immediately to your right is a convenient WC — ideal for guests or everyday use. Also to your right are the bedrooms: the main bedroom is a well-sized double with excellent built-in storage and plenty of natural light, creating a calm and inviting atmosphere. Next door, the second bedroom is slightly smaller but also features integrated storage to help keep things tidy and clutter-free.

Turning left from the hallway, you'll find the kitchen — a bright, functional space with generous counter areas and ample storage both above and below. A large window allows plenty of natural light to fill the room, making it a pleasant place to prepare meals.

Continuing through the property, you'll come to the shower room, stylishly appointed with a modern shower unit, wash basin, and WC.

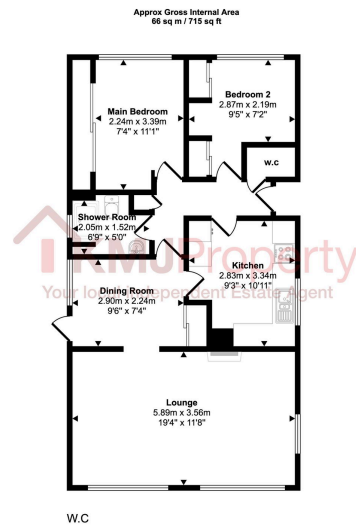
Further on, you're welcomed into the separate dining room, which can also be accessed directly from the kitchen — ideal for family meals, dinner parties, or simply enjoying a leisurely breakfast while looking out over the surroundings.

From the dining room, you will find the lounge — a beautifully spacious room with dual-aspect windows that flood the space with light. This is a fantastic room for relaxing and unwinding, with enough space to arrange both seating and media areas.

Outside, the home benefits from a private patio area, perfect for al fresco dining or simply enjoying the fresh countryside air. To the rear, there is a further attractive patio spot by the back steps and greenhouse — another lovely area to sit and soak up the sun. A garden shed provides handy outdoor storage.

This well-maintained park home is part of a friendly, well-kept community on the Hedge Barton site, which has a part-time on-site warden and backs onto open countryside, offering a peaceful and rural setting.





This floorplan is only for illustrative purposes and is not to scale. Measurements of rooms, doors, windows, and any items are approximate and no responsibility is taken for any error, omission or mis-statement. Icons of items such as bathroom suites are representations only and may not look like the real items. Made with Made Snappy 360.

- Over 50s
- 2 Bedrooms
- Bright Kitchen
- Shower Room
- EPC: Exempt
- Park Home
- Spacious Lounge
- Peaceful Location
- Garden with Patio and Shed
- Council Tax band: A

