



*Local to you - contactable when you need us*

 **KMJProperty**  
Your local independent Estate Agent



# White Cottage, Apsley Street, Tunbridge Wells

Guide Price £425,000

🛏 3 🍳 2 🚿 2





White Cottage sits as the oldest property in the desirable Denny Bottom area, this delightful home offers a rare opportunity to own a truly individual residence, rich in charm, character, and local history.

The main garden is positioned at the front of the property and is a real highlight of the home. Fully enclosed for privacy, it features a generous patio area ideal for relaxed outdoor dining, a well-tended lawn, and a versatile garden shed—perfect for hobbies, storage, or working from home. Please note, there is no rear garden; all outdoor space is located at the front, providing a unique and attractive setting for this charming home.

Steps lead you down to the entrance, where you're welcomed into a property that instantly feels inviting. Straight ahead, the stairs take you up to the first floor, while to your right is the cosy sitting room—bright and homely, with natural light pouring in, it's the perfect space to unwind.

To the left of the entrance, you'll find the heart of the home: the kitchen, dining room, and a downstairs bedroom. The kitchen has a warm, traditional feel with oak worktops and plenty of cupboard space, filled with natural light and full of character.

At the front of the house is the charming dining room—bright and welcoming, with a beautiful bay window that makes it a lovely spot to enjoy family meals or entertain friends.

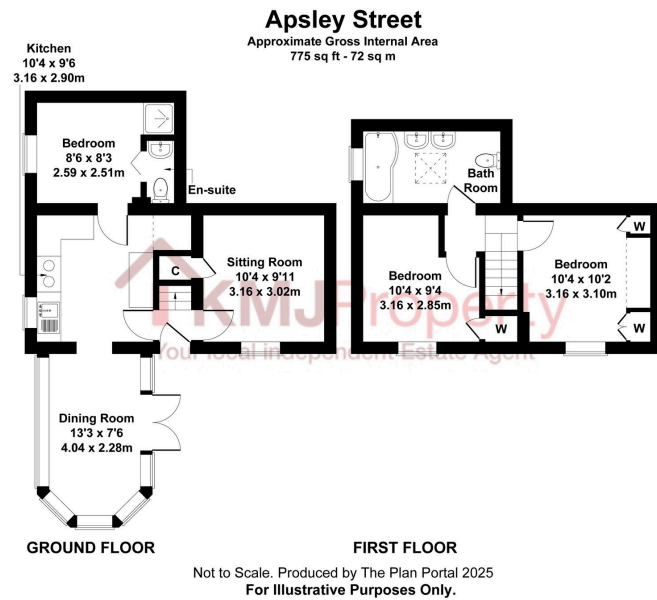
Tucked away at the back of the house is a comfortable ground floor double bedroom, complete with its own en suite WC and separate shower cubicle—ideal for guests or flexible living arrangements.

Upstairs, there are two further double bedrooms and a family bathroom. The main bedroom offers a generous amount of space and storage, while the second bedroom, slightly smaller, is well-suited as a child's room, guest space, or home office.

The bathroom has a homely yet practical layout, with a shower-over-bath, double sink, and a Velux window that fills the space with natural light and slate tiled flooring.







- Oldest Property in Denny Bottom
- Semi Detached
- Rustic Charm
- Desirable Location
- EPC: D
- 3 Bedrooms
- Downstairs Bedroom with En Suite
- Family Bathroom with Double Basin
- Plenty of Natural Light
- Council Tax Band: C

