



Local to you - contactable when you need us

 **KMJProperty**
Your local independent Estate Agent

Court Meadow Close, Rotherfield

Offers Over £570,000

🛏️ 4 🚿 2 🚗 2



Stepping inside the front door you are greeted with a generous entrance porch providing plenty of space for coats and shoes. To the front of the property is the modern kitchen area boasting a sleek finish providing ample storage across the floor level and wall mounted cupboards, counter top space, tiled splash back walls and beautifully finished LED lighting located at floor level giving the kitchen a luxurious feel.

Heading through this property, you will find yourself in a bright, open living/dining space offering a perfect area for entertaining, dining, interacting and enjoying the abundance of light that fills this space via the convenient patio doors leading you directly into the rear garden. The feature brick wall fireplace and space provided in the lounge creates endless opportunities for families.

Conveniently located left of the lounge is a downstairs WC also provided with extra storage under the wash basin.

Moving to the first floor of the property you are greeted with 3 double bedrooms and 1 single. All the double bedrooms offer built in storage cupboards or wardrobe space for extra convenience. The family bathroom provides an over bath shower giving you the versatile option of both, and plenty of under wash basin storage. The main bedroom includes an en-suite bathroom with a shower cubicle and a built in L shaped storage unit perfect for storing all your bathroom necessities.

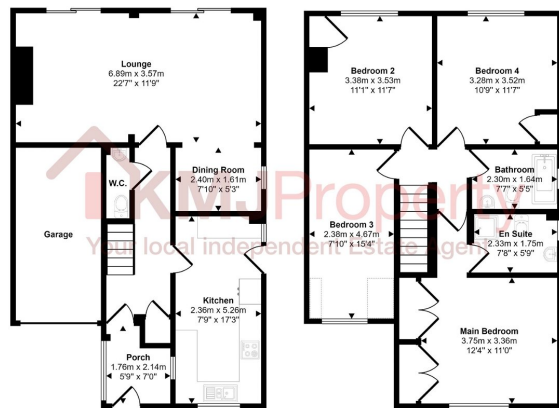
To the rear of the property is the garden, offering a large patio perfect for BBQ's and summer parties and beyond the patio is an easily maintained lawn area and attached garage.

Rotherfield is a picturesque village nestled in the East Sussex countryside, renowned for its charming historic buildings, quaint streets, and vibrant community spirit.

Crowborough offers a variety of shopping options, excellent schools, and recreational facilities, including the Crowborough Leisure Centre and golf courses. Commuting to London is convenient, with mainline rail services accessible at Jarvis Brook or Eridge stations. The Ashdown Forest, inspiration for A.A. Milne's Winnie the Pooh stories,



Approx Gross Internal Area
135 sq m / 1452 sq ft



Ground Floor
Approx 67 sq m / 725 sq ft

First Floor
Approx 67 sq m / 726 sq ft

□ Denotes head height below 1.5m

This floorplan is only for illustrative purposes and is not to scale. Measurements of rooms, doors, windows, and any items are approximate and no responsibility is taken for any error, omission or mis-statement. Icons of items such as bathroom suites are representations only and may not look like the real items. Made with Made Snappy 360.

- Detached
- Driveway
- Garage
- Rear Garden
- EPC D
- 4 bedrooms
- En suite
- Downstairs WC
- Council D



Energy Efficiency Rating		
	Current	Potential
<i>Very energy efficient - lower running costs</i>		
(92 plus) A		
(81-91) B		
(69-80) C		78
(55-68) D	62	
(39-54) E		
(21-38) F		
(1-20) G		
<i>Not energy efficient - higher running costs</i>		
England & Wales	EU Directive 2002/91/EC	

☎ 01892 515188

Offices in Tunbridge Wells & Crowborough

✉ sales@kmjproperty.co.uk

🌐 www.kmjproperty.co.uk