



8 Arundel Close, Maidenhead, SL6 5JY
£650,000 Freehold

CHAIN FREE A three bedroom detached bungalow benefitting from a generous L shaped living/dining room and garage. Arundel Close is a desirable cul-de-sac within the catchment area of Newlands Girls School and is walking distance of local amenities and National Trust Land at Pinkneys Green.

Entrance Hall

Cloakroom

WC, wash basin, heated towel rail

Sitting/Dining room

Generous L shaped living/dining room, double aspect, door leading to kitchen

Kitchen

Comprising floor and wall units, stainless steel sink with mixer taps, electric oven with hob and extractor fan over, integrated dishwasher and fridge freezer, space for washing machine and dryer

Bathroom

Shaped panelled bath, shower above, WC, wash basin cabinet, tiled surround

Bedroom 1

Bedroom 2

Patio doors leading to garden

Bedroom 3

Garage

Outside

Paved patio, lawn with established borders, driveway parking for a number of cars

Floor Plan

Approximate Floor Area = 105.6 sq m / 1136 sq ft
Garage = 12.4 sq m / 133 sq ft
Total = 118 sq m / 1269 sq ft

Arundale

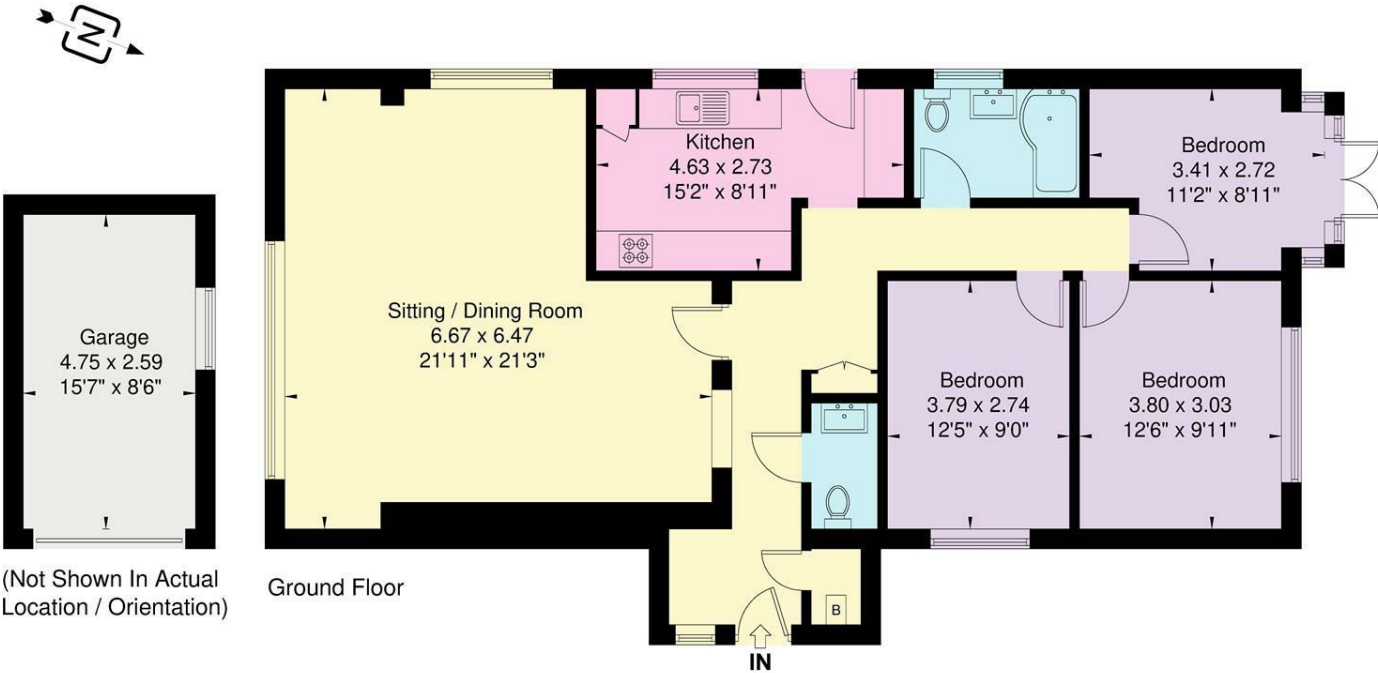
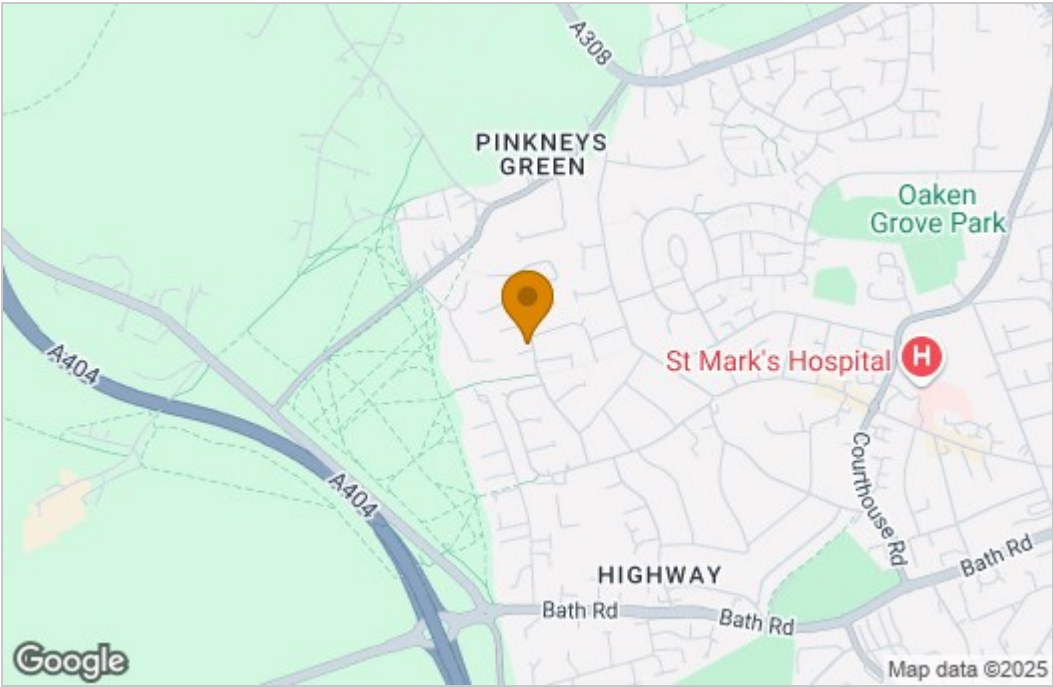
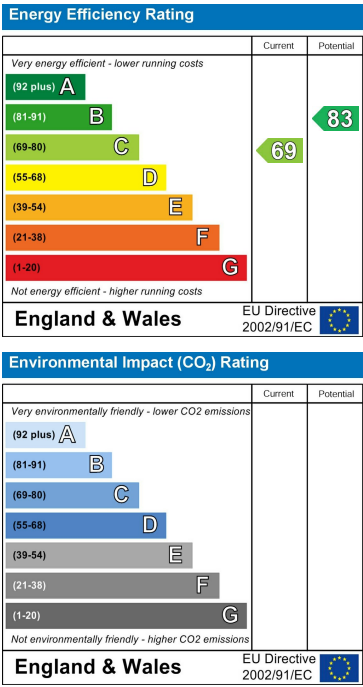


Illustration for identification purposes only,
measurements are approximate, not to scale.

Area Map



Energy Efficiency Graph



These particulars, whilst believed to be accurate are set out as a general outline only for guidance and do not constitute any part of an offer or contract. Intending purchasers should not rely on them as statements of representation of fact, but must satisfy themselves by inspection or otherwise as to their accuracy. No person in this firm's employment has the authority to make or give any representation or warranty in respect of the property.