



4 Regents Place, 48 Bath Road, Maidenhead, SL6 4JX
£325,000 Share of Freehold

A spacious, well presented two bedroom ground floor apartment within easy walking distance of the town centre and Elizabeth Line station. The main bedroom has the advantage of an en suite shower room and there is a good sized sitting room. The property has an allocated parking space as well as visitors parking bays.

Communal Entrance Hall

With entryphone system, cupboard housing electric meters

Private Entrance Hall

Large storage cupboard

Sitting Room

Bay window to side, spot lights

Kitchen

Floor and wall mounted units and drawers, electric oven with gas hob and extractor fan over, built in fridge/freezer, washer/dryer, slimline dishwasher, tiled splashbacks, gas fired boiler

Double Bedroom

Built in mirror fronted wardrobe cupboards, door to

En Suite Shower Room

Glazed shower cubicle, close coupled WC, wash hand basin with mirror and vanity unit over, tiled splashbacks, extractor fan, chrome heated towel rail

Bedroom

Bathroom

Panel enclosed bath with hand held shower attachment, close coupled WC, pedestal wash hand basin with mirrored vanity unit above, extractor fan

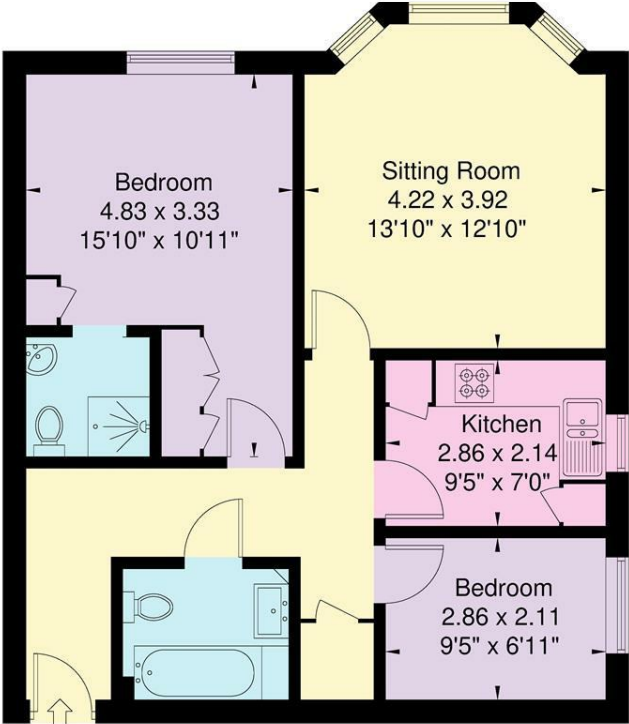
Outside

Well kept communal grounds surround the property. There is one allocated parking space along with visitors parking bays. Brick built bike storage shed

Floor Plan

Approximate Floor Area = 62.3 sq m / 670 sq ft

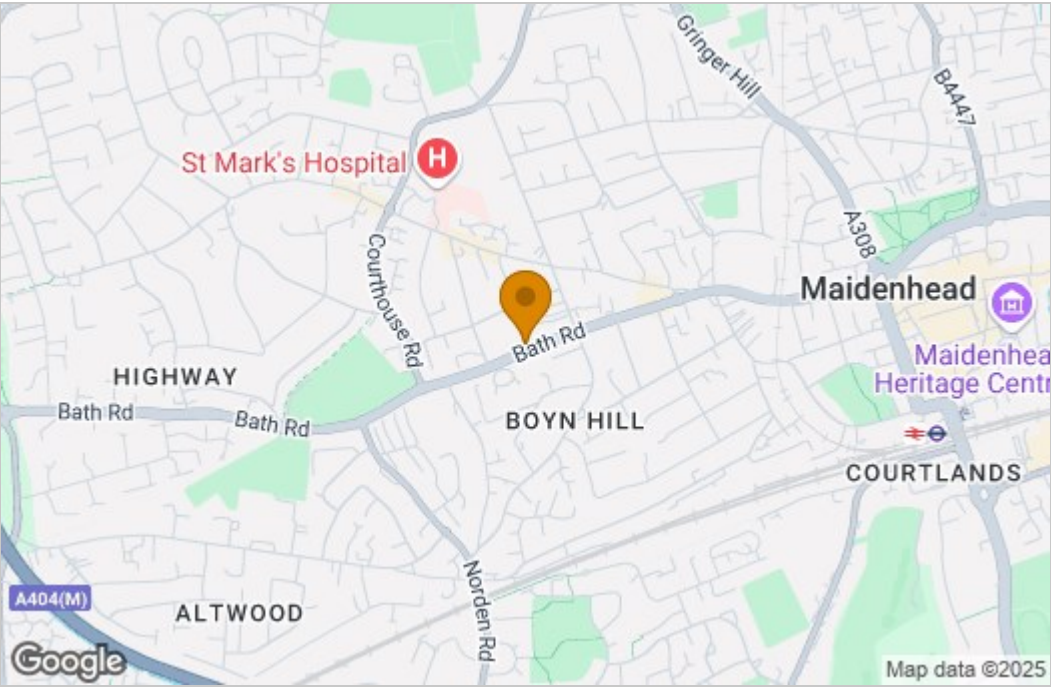
Regents Place



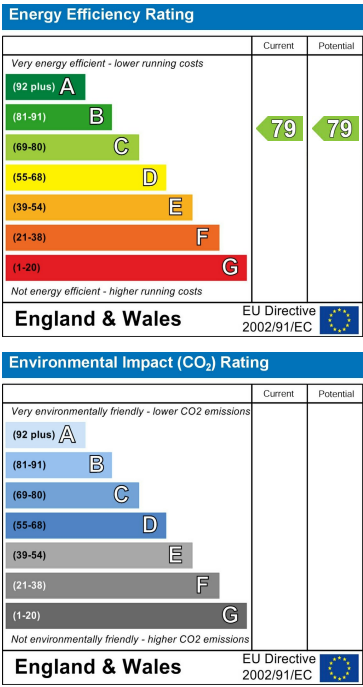
IN
Ground Floor

Illustration for identification purposes only,
measurements are approximate, not to scale.

Area Map



Energy Efficiency Graph



These particulars, whilst believed to be accurate are set out as a general outline only for guidance and do not constitute any part of an offer or contract. Intending purchasers should not rely on them as statements of representation of fact, but must satisfy themselves by inspection or otherwise as to their accuracy. No person in this firms employment has the authority to make or give any representation or warranty in respect of the property.