



**21a Cookham Road, Maidenhead, SL6 7EF**  
**£210,000 Share of Freehold**

CHAIN FREE A particularly attractive well presented, one bedroom ground floor apartment centrally located within easy walking distance of the town centre and the Elizabeth Line Station giving fast access to central London. The property has a share of the freehold and parking space.

### **Communal Entrance Hall**

Entryphone system.

### **Entrance Hall**

### **Sitting Room**

A lovely high ceiling room with fireplace (not used), bay window, coved ceiling, radiator and intercom.

### **Kitchen**

White gloss finished units incorporating work surface, stainless steel sink, floor and wall cupboards and drawers, built in oven with ceramic hob over and extractor above, space for washing machine and under work surface fridge, tiled splashbacks, wall heater.

### **Double Bedroom**

With two built in floor to ceiling wardrobe cupboards, radiator.

### **En Suite Bathroom**

White suite of panelled bath with mixer taps and shower attachment over, close coupled wc, wash basin with cupboard below, wall tiling, extractor fan.

### **Communal Basement**

Divided into four areas ideal for storage.

### **Outside**

Parking. We understand there are two spaces used for this flat. To the rear of the property is a patio area.

Floor Plan

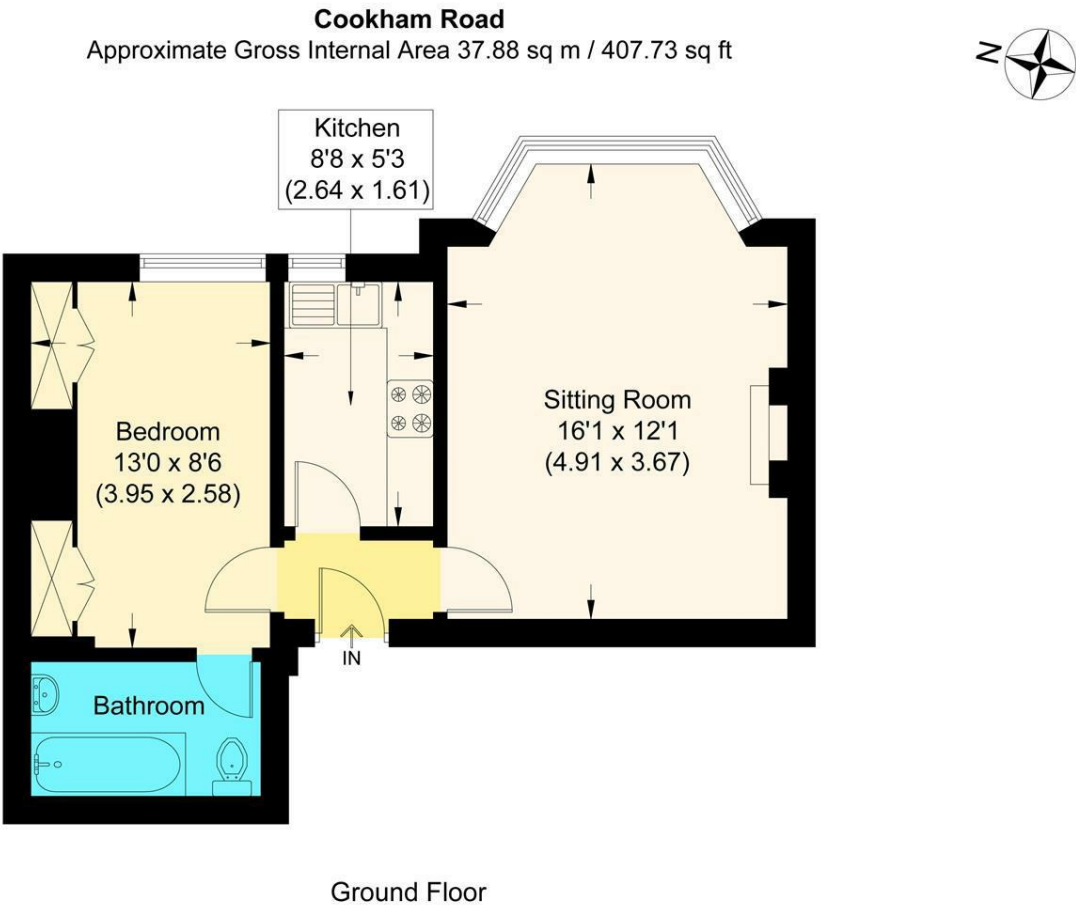
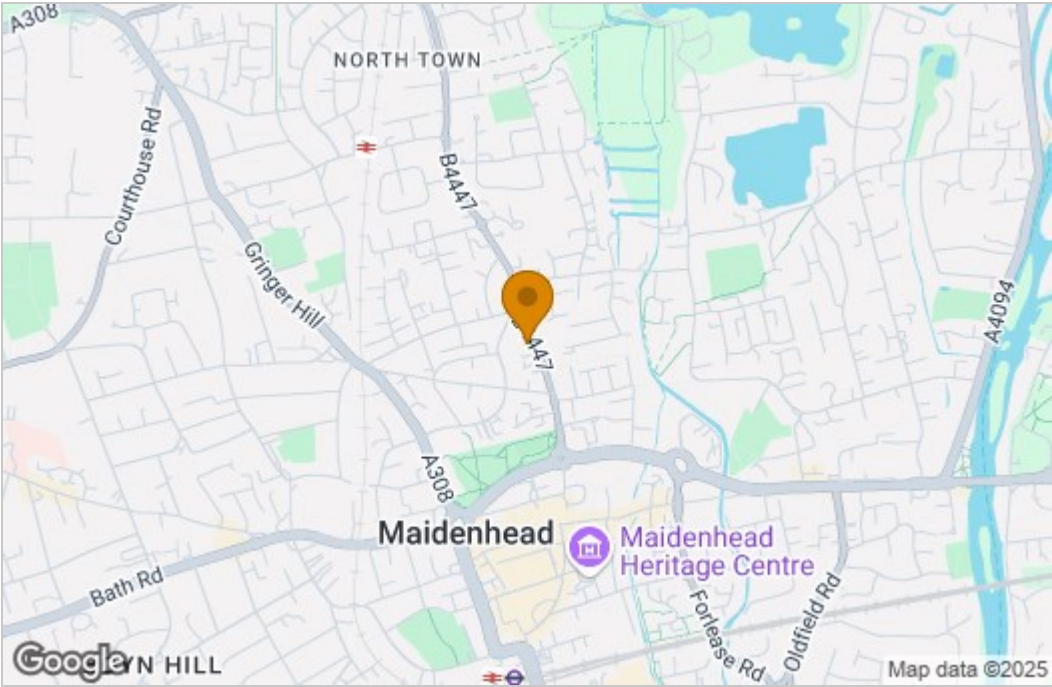
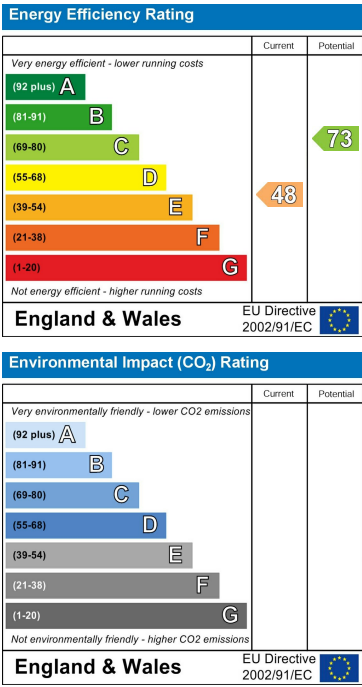


Illustration for identification purposes only,  
measurements are approximate, not to scale.

Area Map



Energy Efficiency Graph



These particulars, whilst believed to be accurate are set out as a general outline only for guidance and do not constitute any part of an offer or contract. Intending purchasers should not rely on them as statements of representation of fact, but must satisfy themselves by inspection or otherwise as to their accuracy. No person in this firms employment has the authority to make or give any representation or warranty in respect of the property.