



95 Belmont Road, Maidenhead, SL6 6LG
£525,000 Freehold

CHAIN FREE : A beautifully presented three bedroomed, ready to move into, terraced cottage. Situated in the sought after Belmont area, with refitted kitchen, two reception rooms, spacious bath/shower room, gas central heating and a long South facing garden. Conveniently located within walking distance of the town centre and Elizabeth Line station.

Recessed Entrance Porch to

Entrance Hall

Radiator set behind a filigree fronted panel.

Sitting Room

Fireplace with wood burner and with tiled slips and slate surround incorporating a mantel shelf and in the adjoining recesses are fitted cupboards.

Dining Room

Recess with small wooden beam over and space for a Dimplex wood burner style heater, glazed panel door to garden, walk in understairs cupboard.

Kitchen

Refitted with ample work surfaces, inset stainless steel sink, good range of floor and wall cupboards and drawers, tiled splashbacks, incorporating a cupboard with fridge/freezer, built in oven with ceramic hob and extractor above, ceramic tiled floor, cupboard housing a Worcester gas fired boiler, glazed panelled door to garden.

First Floor Landing

Stairs leading from entrance hall to first floor landing, access hatch to part boarded loft with light.

Bedroom 1

Victorian fireplace retained as a feature, large overstairs wardrobe cupboard.

Bedroom 2

Bedroom 3

Bath/Shower Room

White suite comprising free standing roll top bath with hand held shower attachment, close coupled WC, wash basin set into a unit with cupboard below, walk in shower cubicle with glazed enclosure, fully tiled walls, heated towel rail, mirror fronted medicine cabinet.

Outside

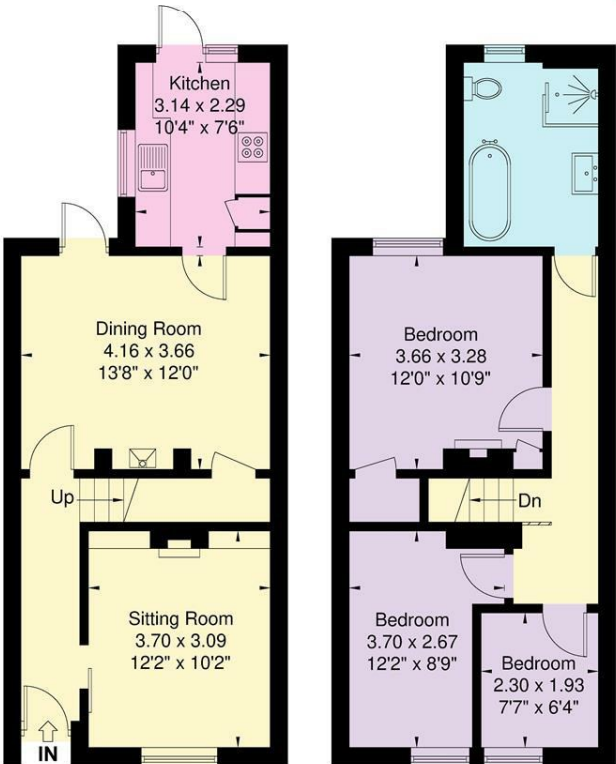
The rear garden is of good size with a southerly aspect and well enclosed by fencing. There is a paved terrace leading through a pergola down steps to a lawn with mature flower and shrub borders, timber garden storage shed.

Floor Plan

Approximate Floor Area = 86.1 sq m / 926 sq ft

Belmont Road

Waterman
Established 1990

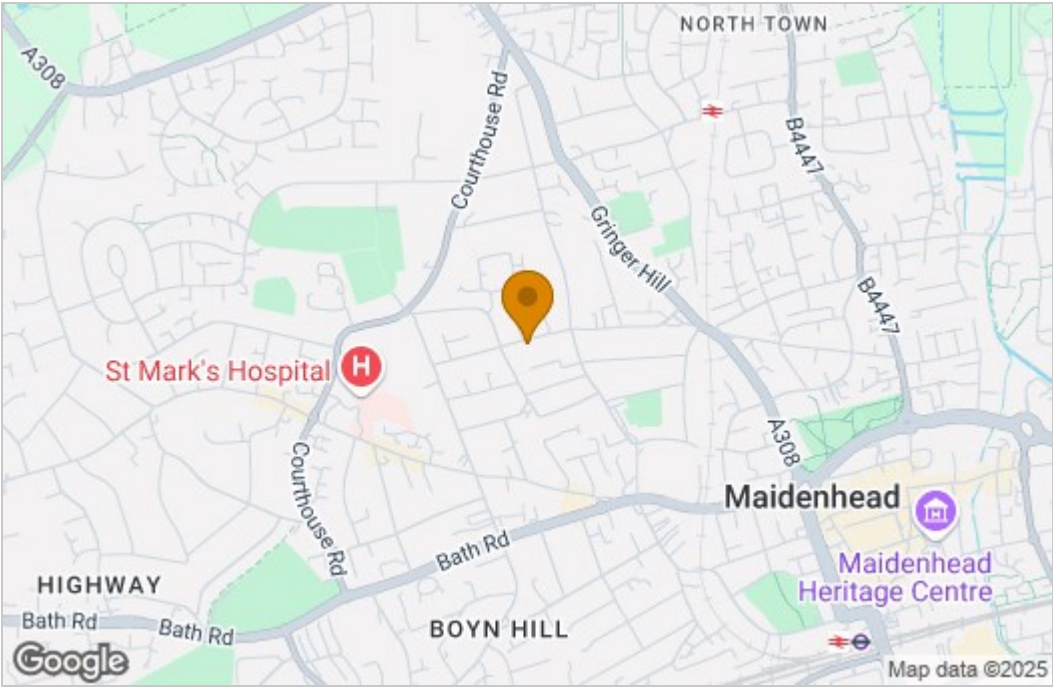


Ground Floor

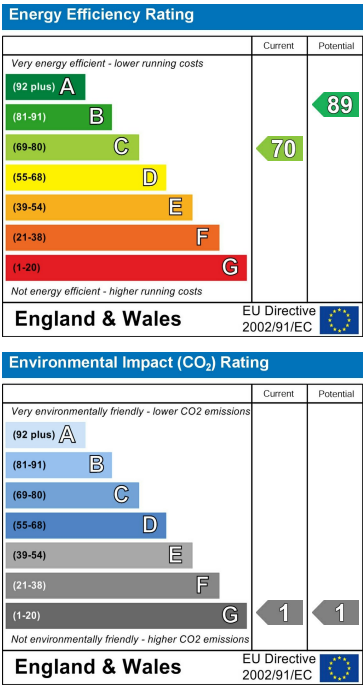
First Floor

Illustration for identification purposes only,
measurements are approximate, not to scale.

Area Map



Energy Efficiency Graph



These particulars, whilst believed to be accurate are set out as a general outline only for guidance and do not constitute any part of an offer or contract. Intending purchasers should not rely on them as statements of representation of fact, but must satisfy themselves by inspection or otherwise as to their accuracy. No person in this firms employment has the authority to make or give any representation or warranty in respect of the property.