



30 Fairacre, Maidenhead, SL6 4AN

£400,000 Freehold

CHAIN FREE a conveniently located 3 bedroomed terraced house which has been well maintained but is now in need of some updating. Also with the benefit of a garage the property is within walking distance of local schools, shops and within easy reach of the town centre plus the Elizabeth line station giving fast access to central London.

Entrance Hall

Understairs storage cupboard

Kitchen

Comprising units incorporating inset stainless steel sink, floor and wall cupboards and drawers, storage cupboard, work surface, space for washing machine and fridge/freezer, door to back garden

Sitting Room

Window overlooking front garden, electric fireplace

Dining Room

Bathroom

Panelled bath, fully tiled walls, pedestal wash basin

WC

First Floor Landing

Built in airing cupboard

Bedroom 1

Bedroom 2

Bedroom 3

Outside

Rear garden with small grassed area, garden shed, path leading to access at the back. Lawned front garden

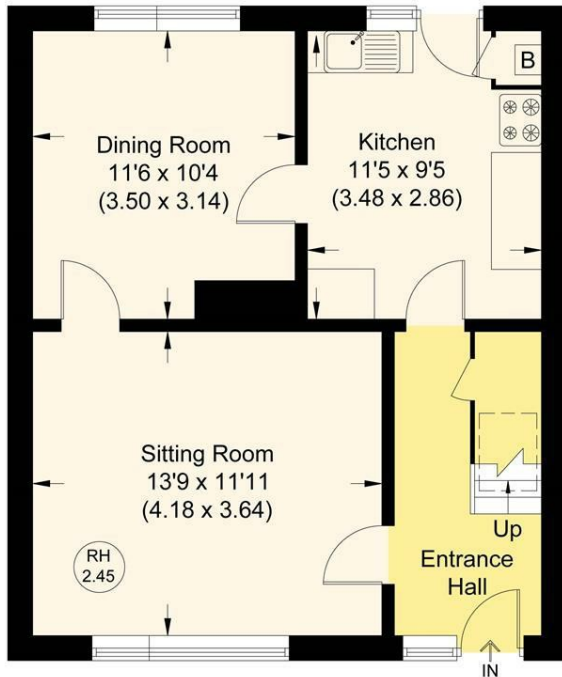
Garage

Set in block

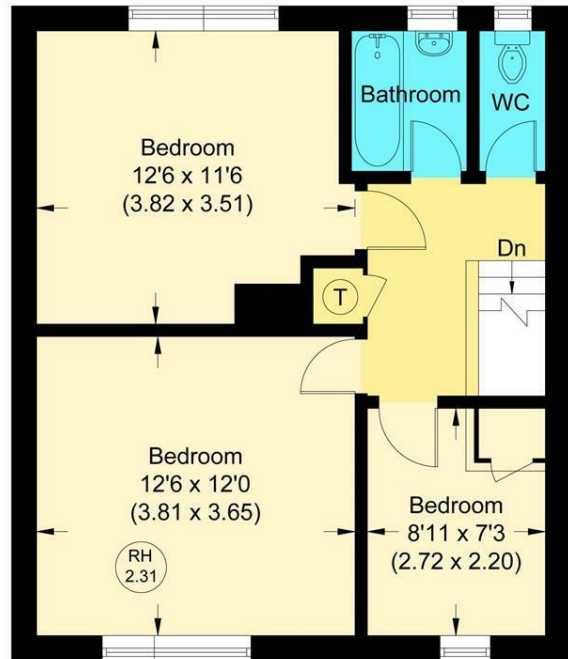
Floor Plan

Fairacre

Approximate Gross Internal Area 88.18 sq m / 949.16 sq ft



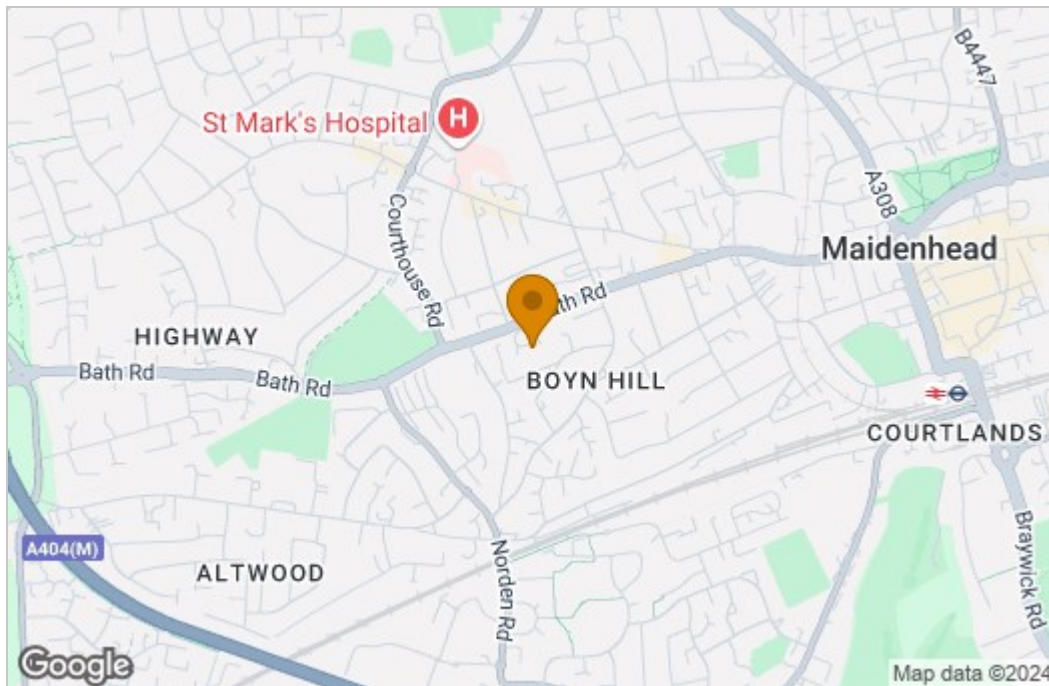
Ground Floor



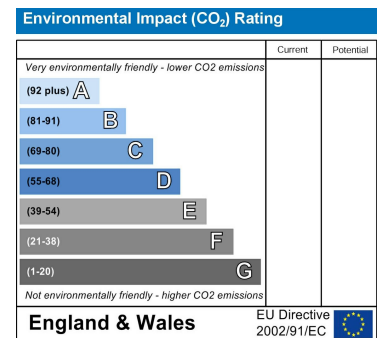
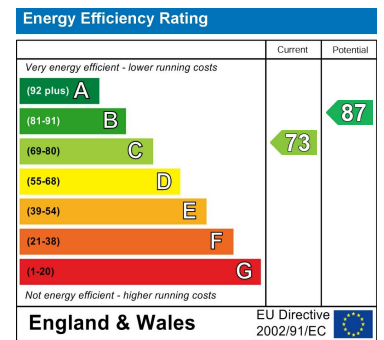
First Floor

Illustration for identification purposes only, measurements are approximate, not to scale.

Area Map



Energy Efficiency Graph



These particulars, whilst believed to be accurate are set out as a general outline only for guidance and do not constitute any part of an offer or contract. Intending purchasers should not rely on them as statements of representation of fact, but must satisfy themselves by inspection or otherwise as to their accuracy. No person in this firm's employment has the authority to make or give any representation or warranty in respect of the property.