



2 The Drive Ray Street, Maidenhead, SL6 8PN
£350,000 Freehold

CHAIN FREE A 2 bedroomed semi detached bungalow in need of updating throughout. The property stands in a particularly good sized garden with gated driveway and ample parking space. The property is conveniently located within walking distance of both the town centre and River Thames.

Entrance Porch

Sitting Room

Brick fireplace.

Kitchen

Fitted wall and floor cupboards, work surfaces with inset sink, built in oven and gas hob with extractor over, space for washing machine, door to garden.

Bathroom

Pedestal wash basin, close coupled WC, panel bath, mixer hand shower taps, glazed screen.

Bedroom 1

Fireplace.

Bedroom 2

Fireplace.

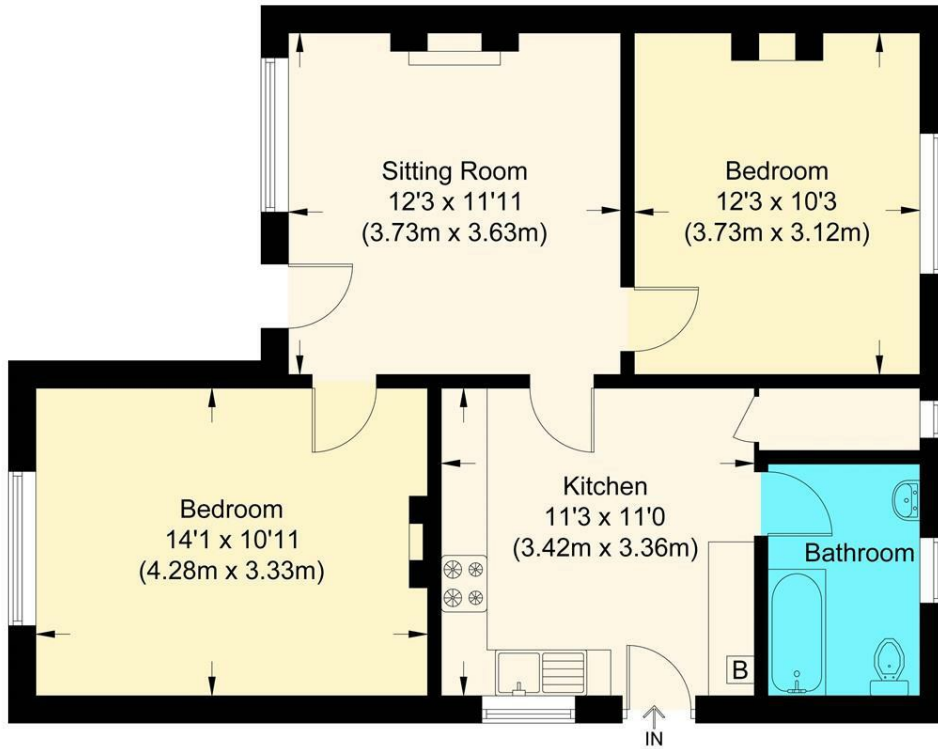
Outside

Garden of a particularly good size laid to lawn, gated gravel drive and parking space for a number of vehicles.

Floor Plan

The Drive

Approximate Gross Internal Area 59.23 sq m / 637.54 sq ft



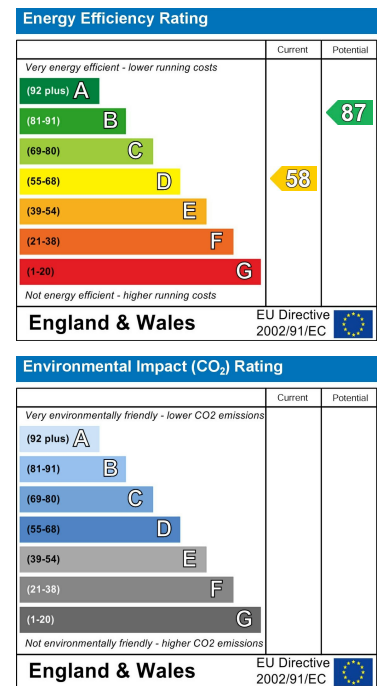
Ground Floor

Illustration for identification purposes only, measurements are approximate, not to scale.

Area Map



Energy Efficiency Graph



These particulars, whilst believed to be accurate are set out as a general outline only for guidance and do not constitute any part of an offer or contract. Intending purchasers should not rely on them as statements of representation of fact, but must satisfy themselves by inspection or otherwise as to their accuracy. No person in this firm's employment has the authority to make or give any representation or warranty in respect of the property.