



33 Denham Close, Maidenhead, SL6 4RN
£335,000 Leasehold - Share of Freehold

CHAIN FREE A particularly spacious three bedrooomed split level maisonette with light and airy accommodation plus a garage and off road parking. Conveniently located within easy walking distance of local shops, schools and within easy reach of the town centre and Elizabeth Line station with fast access to central London. LONG LEASE.

Entrance Hall

Deep storage cupboard , stairs to first floor landing, built in airing cupboard, further built in storage cupboard,

Shower Room

Comprising close coupled WC, wash hand basin, fully tiled shower cubicle, part tiled walls, tiled floor.

Sitting/Dining Room

Sliding sealed double glazed doors to balcony, side windows with views over a park.

Kitchen

Well fitted units incorporating inset stainless steel sink, work surfaces, floor and wall cupboards and drawers, tall storage cupboard, tiled splashbacks, space for tall fridge/freezer, plumbing and space for washing machine and narrow dishwasher, gas hob with oven below, tiled floor.

Stairs to second floor Landing

Hinged access hatch to loft with gas fired boiler, built in airing/storage cupboard.

Bedroom 1

Dual aspect with views over a park.

Bedroom 2

Floor to ceiling built in wardrobe cupboards with mirrored sliding doors, views over a park.

Bedroom 3

Built in wardrobe cupboard.

Bathroom

Comprising suite of panelled bath with Aquastream shower over, pedestal wash basin, close coupled WC, wall tiled around units, tiled floor.

Garage

Up and over door and parking to front. There is also a storage cupboard at the side of the building.

Waterman Residential Lettings offers an ARLA/RICS/NAEA compliant Lettings and Management service.

If you are looking for a buy to let or renting your own property please call our Lettings Director, Samantha Lawrence on 01628 777880 or email slawrence@watermanresidential.co.uk

Floor Plan

Denham Close

Approximate Gross Internal Area 90.08 sq m / 969.61 sq ft

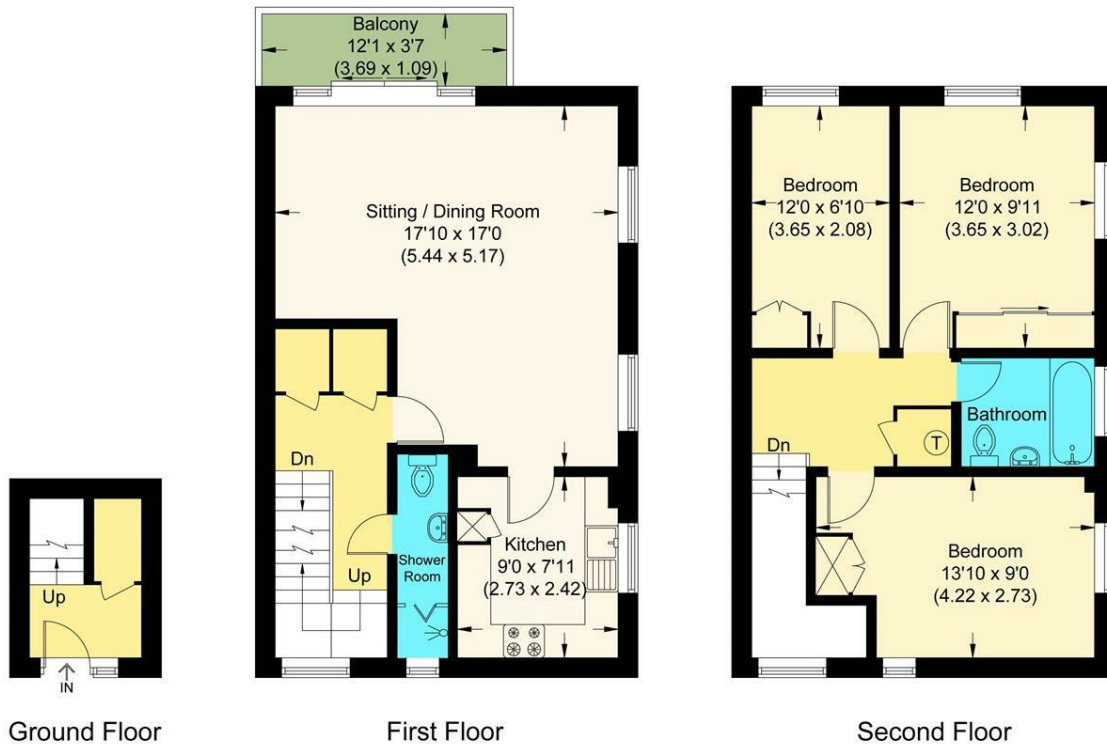
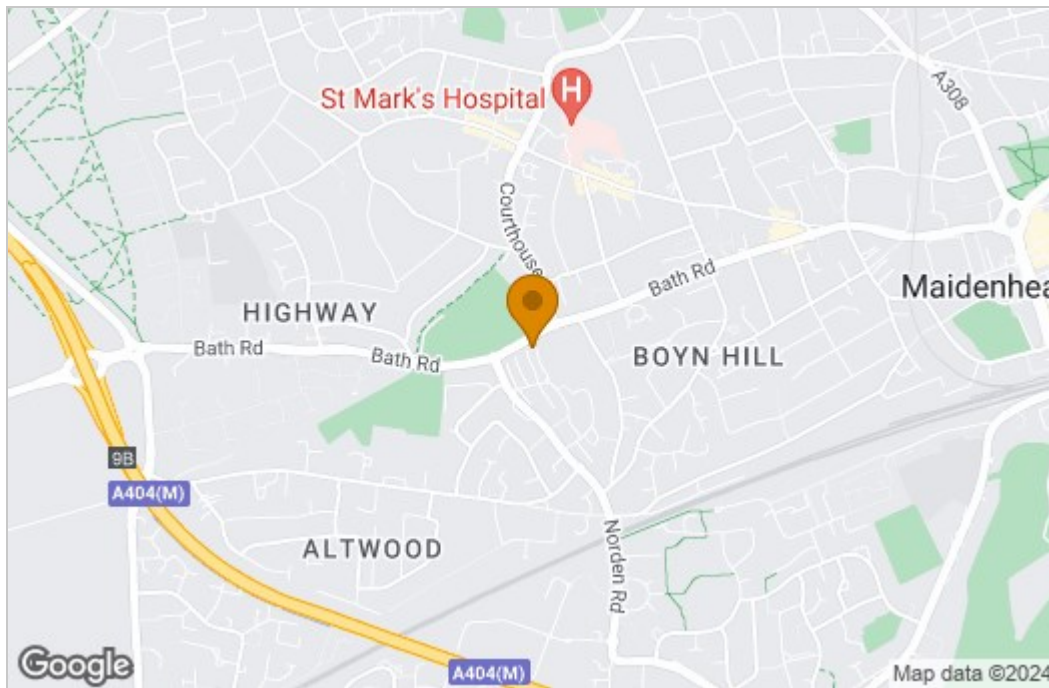
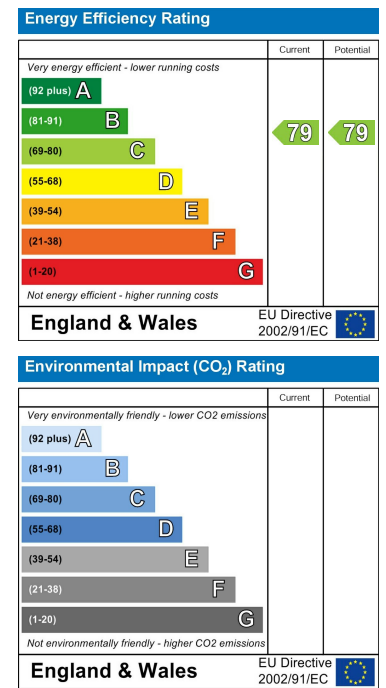


Illustration for identification purposes only, measurements are approximate, not to scale.

Area Map



Energy Efficiency Graph



These particulars, whilst believed to be accurate are set out as a general outline only for guidance and do not constitute any part of an offer or contract. Intending purchasers should not rely on them as statements of representation of fact, but must satisfy themselves by inspection or otherwise as to their accuracy. No person in this firm's employment has the authority to make or give any representation or warranty in respect of the property.