



Denchworth College Road, Maidenhead, SL6 6BE **Offers In The Region Of £850,000 Freehold**

An attractive detached double fronted Victorian house with a large garden in the much sought after College Road area of Maidenhead. The property requires modernisation but has the potential to become a stunning period family home with generous living accommodation. The property is within an easy walk of the town centre, excellent schools, and the Elizabeth line station to central London (the express service takes about 20 minutes). It is only a short drive to nearby motorway links to the M4 and Heathrow airport and the M40.

Covered Entrance Porch

Door to:

Entrance Hall

Family Room

Fireplace.

Sitting/Dining room

Triple aspect

Kitchen

Base and wall mounted units with inset sink and drainer, space for cooker.

Utility Room

Leading to:

Claokroom

From Entrance Hall stairs to:

Bedroom 1

Fireplace and fitted cupboard

Bedroom 2

Fireplace and fitted cupboard.

Bedroom 3

Fireplace.

Bedroom 4

Bathroom

Comprising bath, WC and wash basin.

Outside

The gardens extend to the front and rear. There is off road parking to the front.

Single Length Detached Garage

With attached store.

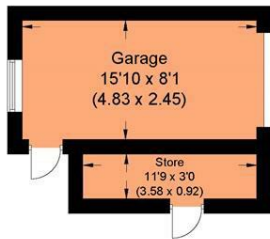
Floor Plan

College Road

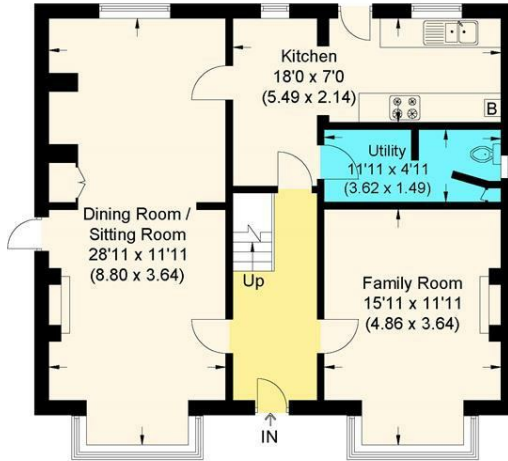
Approximate Gross Internal Area 152.30 sq m / 1639.34 sq ft
(Excluding Garage/Store)

Garage/Store Area 16.20 sq m / 174.37 sq ft

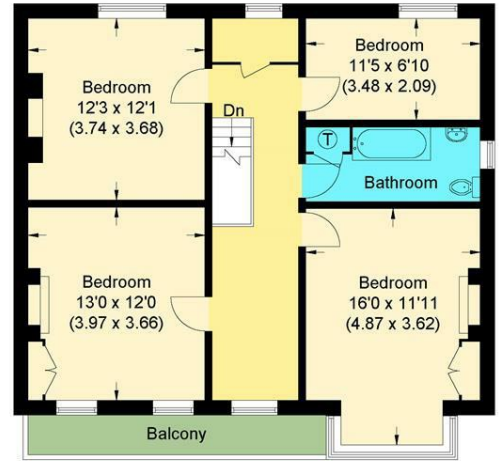
Total Area 168.50 sq m / 1813.71 sq ft (Including Garage/Store)



Garage



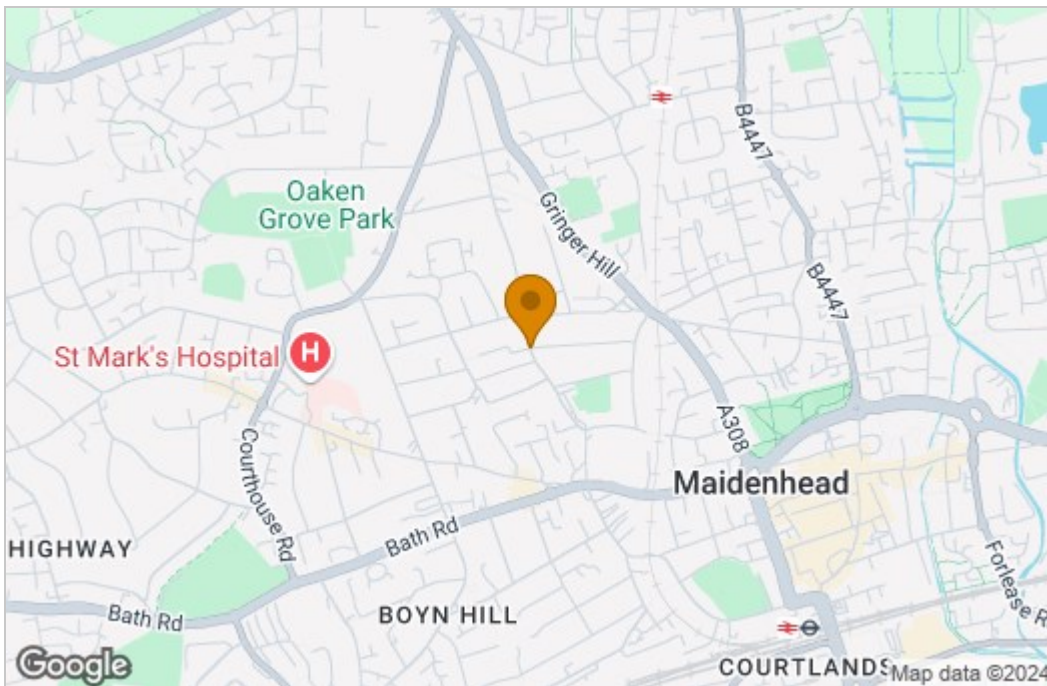
Ground Floor



First Floor

Illustration for identification purposes only, measurements are approximate, not to scale.

Area Map



Energy Efficiency Graph

| Energy Efficiency Rating | | Current | Potential |
|---|--|-------------------------|-----------|
| Very energy efficient - lower running costs | | | |
| (92 plus) A | | | 80 |
| (81-91) B | | | |
| (69-80) C | | | |
| (55-68) D | | | |
| (39-54) E | | 41 | |
| (21-38) F | | | |
| (1-20) G | | | |
| Not energy efficient - higher running costs | | | |
| England & Wales | | EU Directive 2002/91/EC | |
| Environmental Impact (CO ₂) Rating | | Current | Potential |
| Very environmentally friendly - lower CO ₂ emissions | | | |
| (92 plus) A | | | |
| (81-91) B | | | |
| (69-80) C | | | |
| (55-68) D | | | |
| (39-54) E | | | |
| (21-38) F | | | |
| (1-20) G | | | |
| Not environmentally friendly - higher CO ₂ emissions | | | |
| England & Wales | | EU Directive 2002/91/EC | |

These particulars, whilst believed to be accurate are set out as a general outline only for guidance and do not constitute any part of an offer or contract. Intending purchasers should not rely on them as statements of representation of fact, but must satisfy themselves by inspection or otherwise as to their accuracy. No person in this firm's employment has the authority to make or give any representation or warranty in respect of the property.