



## **Little House Waltham Road, Maidenhead, SL6 3SG**

**£995,000 Freehold**

CHAIN FREE - A 4 bedroomed detached house with tremendous character features including some beamed ceilings set in a village location. The property has good family accommodation including separate reception rooms, a spacious kitchen/breakfast room, a good size garden double carport and parking space. Within easy reach of Maidenhead head town centre, schools and Elizabeth line station giving fast access to central London.

## **Entrance Hall**

Cloaks cupboard.

## **Dining Room**

Double aspect, serving hatch to kitchen, casement doors to patio and garden.

## **Sitting Room**

A characterful room with heavy beamed ceiling, brick Inglenook style fireplace with wood burner.

## **Shower Room**

Comprising vanity unit with wash basin and cupboards below, tiled surround and unit above with mirror, fully tiled shower cubicle, heated towel rail, tiled floor.

## **Kitchen/Breakfast Room**

Tiled floor, granite worksurfaces with inset sink, oak finished floor and wall cupboards and drawers, tiled splashbacks, space for a cooker with tiling and extractor above, pine island unit incorporating cupboard, drawer and bottle rack. Stable door to patio and garden.

From Entrance Hall stairs to:

## **First Floor Landing**

Access hatch to loft, airing cupboard with hot water cylinder.

## **Bedroom 1**

Brick fireplace retained as a feature. double built in wardrobe cupboard.

## **Bedroom 2**

Exposed ceiling beams, double built in wardrobe cupboard.

## **Bedroom 3**

Double aspect, fitted wardrobe cupboard with mirror panel door.

## **Bedroom 4**

Access hatch to under eaves storage space.

## **Bathroom**

White suite comprising shaped panelled bath with shower unit over and glazed screen, WC, wash basin with cupboard and drawer under. tiled floor, heated towel rail.

## **Outside**

The rear garden has a brick patio and pathways, lawn with central flowerbed, raised paved patio, mature shrubs and trees. large timber shed with tiled roof, power and light.

The front garden has a five bar entrance gate leading to a gravelled drive and parking space, evergreen hedging and old brick wall to boundary .

Double Carport with tiled roof.

# Floor Plan

## Waltham Road

Approximate Gross Internal Area 157.81 sq m / 1698.65 sq ft  
 (Excluding Carport)  
 Carport Area 25.90 sq m / 278.78 sq ft  
 Total Area 183.71 sq m / 1977.43 sq ft (Including Carport)

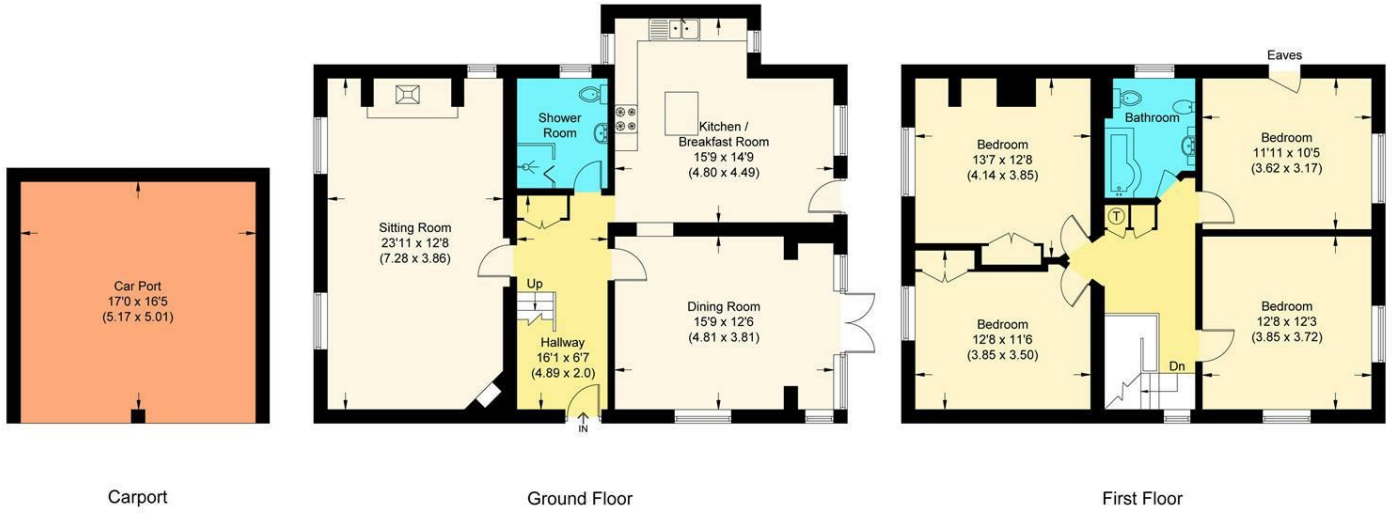
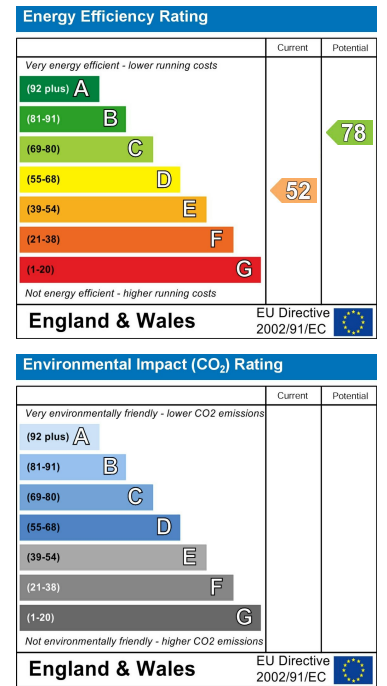


Illustration for identification purposes only, measurements are approximate, not to scale.

# Area Map



# Energy Efficiency Graph



These particulars, whilst believed to be accurate are set out as a general outline only for guidance and do not constitute any part of an offer or contract. Intending purchasers should not rely on them as statements of representation of fact, but must satisfy themselves by inspection or otherwise as to their accuracy. No person in this firm's employment has the authority to make or give any representation or warranty in respect of the property.