



24 Shaftesbury Court, Maidenhead, SL6 2RS
£275,000 Leasehold

A chain free ground floor 2 bedroom apartment on this modern gated development within 5 minutes walk from the Elizabeth Line station and Maidenhead town centre. The property offers well proportioned accommodation with the benefit of a patio, good security and ample parking.

Communal Entrance Hall

Door to

Entrance Hall

Wall mounted Entryphone, storage/meter cupboard, cupboard housing Mega flow tank.

Bathroom

Comprising white suite, panel enclosed bath tub, shower screen, Rainfall shower, wall mounted shower attachment, Vanity sink unit with mirror & cupboards, WC, heated towel rail, fully tiled walls.

Bedroom 1

Built in Wardrobe.

Bedroom 2

Sitting Room

French doors open to patio area and communal gardens.

Kitchen / Breakfast Room

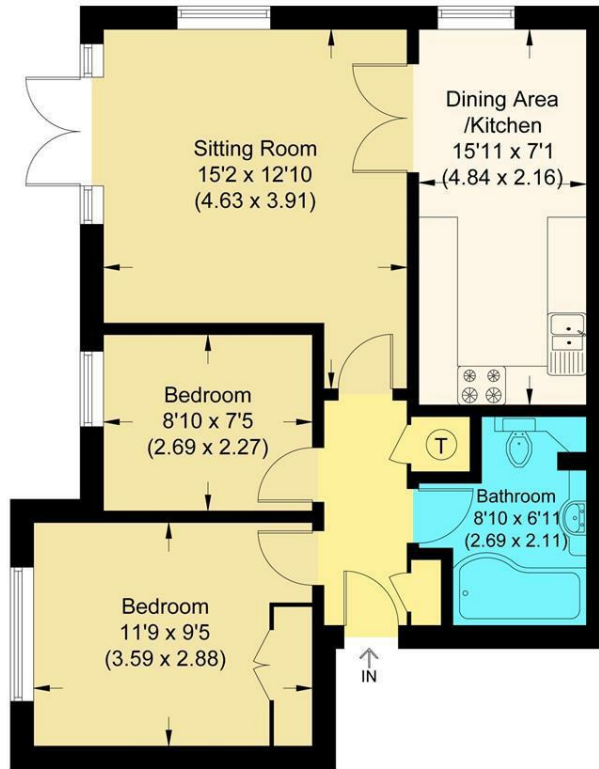
Range of floor, wall and drawer units, space and plumbing for washing machine, dishwasher, fridge freezer, built in electric oven and hob, integrated extractor fan above hob, space for table and chairs.

Outside

Electric gates, parking, communal gardens.

Floor Plan

Ludlow Road
 Approximate Gross Internal Area 54.55 sq m / 587.17 sq ft



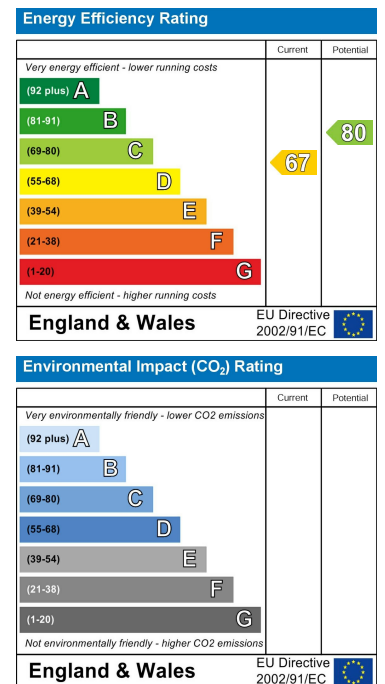
Ground Floor

Illustration for identification purposes only,
 measurements are approximate, not to scale.

Area Map



Energy Efficiency Graph



These particulars, whilst believed to be accurate are set out as a general outline only for guidance and do not constitute any part of an offer or contract. Intending purchasers should not rely on them as statements of representation of fact, but must satisfy themselves by inspection or otherwise as to their accuracy. No person in this firm's employment has the authority to make or give any representation or warranty in respect of the property.