



**190 Cookham Road, Maidenhead, SL6 7HP**

**£635,000 Freehold**

A four bedroom extended semi-detached house with good family accommodation including a 19ft Kitchen/breakfast room , 24ft Dining/Sitting room and a 22ft main bedroom plus a large garden shed for storage. Located within 5 minutes walk of Furze Platt halt connecting with the Elizabeth Line. Local shops and schools are also within a short walk.

## **Covered entrance porch**

### **Entrance Hall**

Understairs storage and meter cupboard.

### **Cloakroom**

WC, vanity unit with basin.

### **Kitchen / Breakfast Room**

Utility area - Plumbing and space for washing machine, tumble dryer, wall mounted gas fired boiler.

Kitchen comprising range of base, wall & drawer units, space for oven, extractor unit over, space and plumbing for dishwasher, stainless steel sink with mixer tap.

Breakfast area - space for table and chairs, further base kitchen units, space for tall fridge/freezer, door to rear garden.

### **Door to:**

### **Sitting / Dining Room**

Bay window to front, fireplace with electric stone effect fire.

### **Stairs rising to first floor landing**

#### **Bedroom 1**

Extended to the rear, dressing area.

#### **Bedroom 2**

#### **Bedroom 3**

Rear aspect, study area.

### **Shower room**

Comprising shower enclosure with wall mounted shower attachment, wall mounted wash basin, extractor fan.

### **Bathroom**

Comprising panel enclosed bath tub, wall mounted electric shower unit, pedestal wash basin, WC, part tiled walls, heated towel rail, extractor fan.

### **Stairs rising to 2nd floor**

Dormer window.

### **Loft Room**

Window to rear.

### **Outside**

To the front - hard-standing parking for several vehicles, side access to rear garden.

To the rear - steps lead down from the kitchen to an area of lawn with mature borders, raised decking area, large store shed.

# Floor Plan

## Cookham Road

Approximate Gross Internal Area 130.29 sq m / 1402.43 sq ft  
 (Excluding Outbuilding)  
 Outbuilding Area 16.45 sq m / 177.06 sq ft  
 Total Area 146.74 sq m / 1579.49 sq ft (Including Outbuilding)

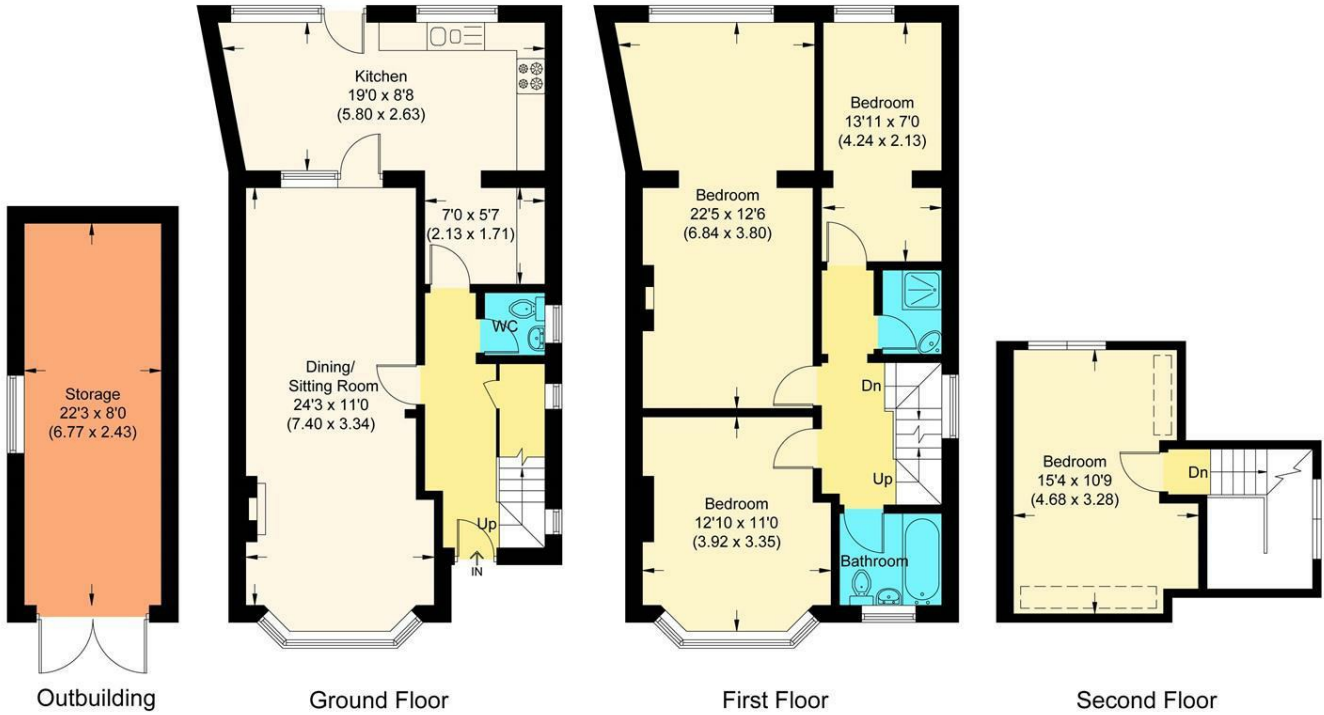
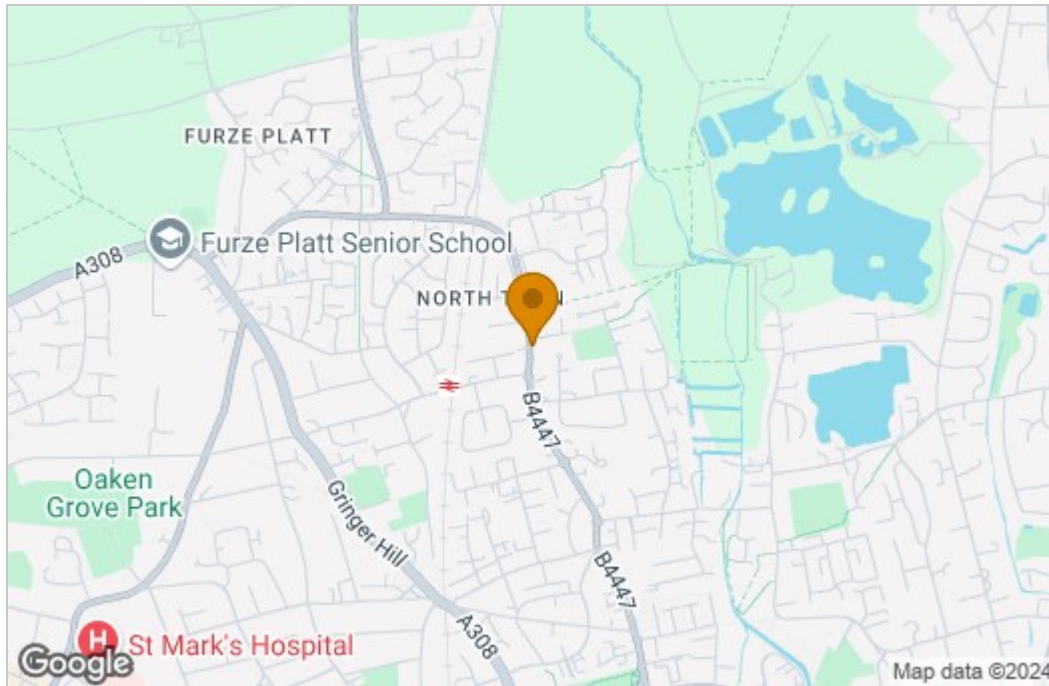
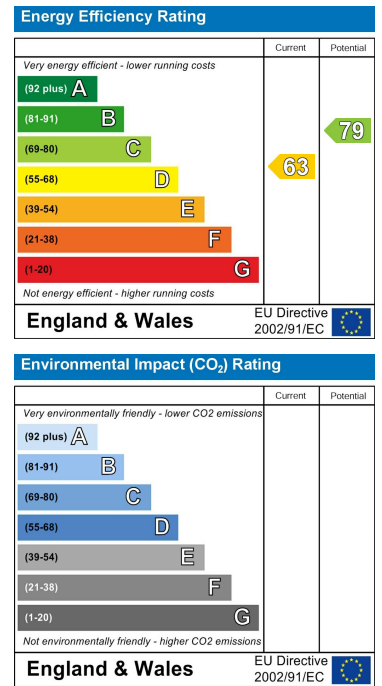


Illustration for identification purposes only, measurements are approximate, not to scale.

# Area Map



# Energy Efficiency Graph



These particulars, whilst believed to be accurate are set out as a general outline only for guidance and do not constitute any part of an offer or contract. Intending purchasers should not rely on them as statements of representation of fact, but must satisfy themselves by inspection or otherwise as to their accuracy. No person in this firm's employment has the authority to make or give any representation or warranty in respect of the property.