

JAMES SELICKS

FLAT 21 THE COTTON MILL

KING STREET
LEICESTER, LE1 6RN

GUIDE PRICE £185,000



A beautifully presented loft-style apartment, full of industrial character and charm, ideally located just off the ever-popular New Walk. Offered with no upward chain, this second-floor home blends period features with modern comforts, for stylish city living.

Communal & private entrance hall • open plan kitchen/living/dining area • double bedroom • open en-suite • bedroom two • bathroom • no upward chain • EPC - D

Location

This impressive Grade II Listed Victorian former factory is located in the heart of the city centre, providing convenient access to fashionable bars, restaurants and shopping, as well as leisure activities, the professional quarters and mainline railway access to London St Pancras in approximately one hour.

Accommodation

Stepping through the large wooden front door, you're greeted by a welcoming hallway with wood-effect flooring, a practical storage cupboard housing the water tank and washing machine plumbing, and space for everyday essentials. Exposed beams and industrial-style lighting set the tone straight away, giving a taste of the apartment's unique character. The open-plan living, kitchen, and dining space is the heart of the home, a stylish mix of exposed brickwork, painted and natural beams and striking metal-railed lighting with engineered wood flooring. Flooded with light from two sash windows, it's a space that feels both bold and inviting. The kitchen, with its grey units and vibrant red accents, is fitted with a Westinghouse stainless steel oven, electric hob with extractor, slimline dishwasher, and separate fridge and freezer, all combining function with contemporary flair. Whether entertaining friends or enjoying a quiet evening in, this is a room designed to impress.

The master bedroom is a generous double, blending exposed brickwork and a sash window with fitted wardrobe space. Its open en-suite feels effortlessly modern, complete with walk-in shower, wash basin set on a wooden shelf, WC, cream tiling, and chrome heated towel rail. The second bedroom adds versatility, working equally well as a guest room or home office, with sash window and exposed brick feature wall. The bathroom has a bath with shower over, WC, wash basin, cream tiling, chrome heated towel rail, and wood-topped shelving.

Lease information : We make every effort to ensure these details are correct, however they are subject to change, are not to be relied upon & MUST be verified by Purchaser's Solicitor.

Tenure: Leasehold.

Lease Term: 125 years from 2002.

Ground Rent: £150 per annum.

Service charge : £2,000 per annum. (plus buildings Insurance £840 per annum).

Service charge review period & review increase: Annually

Management: Butlins Plc.

Right to Manage company: The Cotton Mill (Leicester) RTM Company Limited

Local Authority: Leicester City Council, **Tax Band:** D

Conservation Area: New Walk. **Listing Status :** Grade II

Services: Offered to the market with all mains services & electric heating.

Broadband delivered to the property: Fibre, speed unknown.

Wayleaves/Rights of Way/Covenants: None out of the ordinary for apartment blocks.

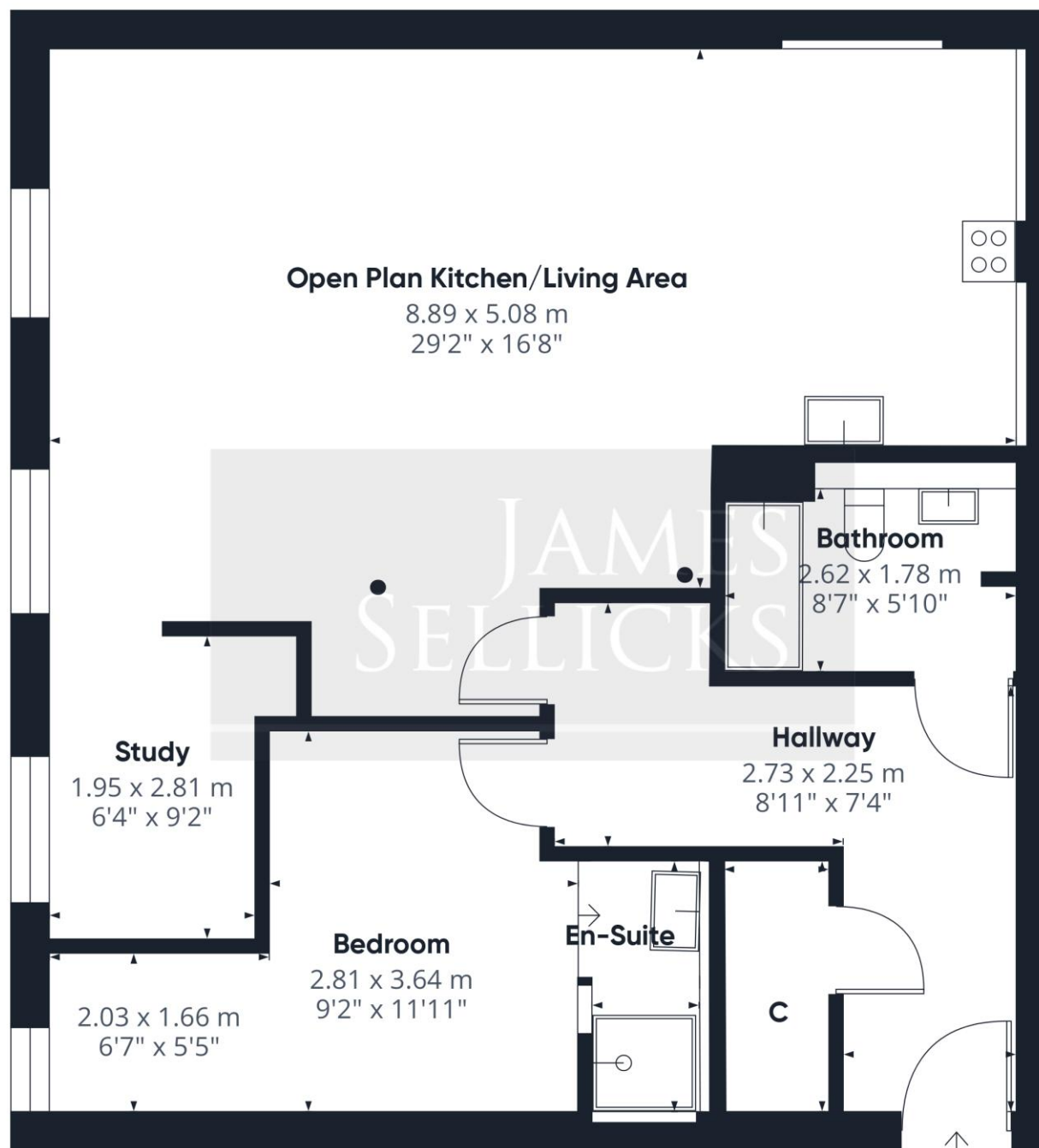
Accessibility issues: The apartment is on an upper floor, there is a lift.

Planning issues: None our Clients are aware of.









Approximate total area⁽¹⁾

86.5 m²

931 ft²

(1) Excluding balconies and terraces

Calculations reference the RICS IPMS 3C standard. Measurements are approximate and not to scale. This floor plan is intended for illustration only.

GIRAFFE360

Leicester Office
56 Granby Street
Leicester
LE1 1DH
0116 2854554
info@jamesselicks.com

Market Harborough Office
01858 410008

Oakham Office
01572 724437

jamesselicks.com



Important Notice

James Sellicks for themselves and for the Vendors whose agent they are, give notice that:

1) The particulars are intended to give a fair and substantially correct overall description for the guidance of intending purchasers and do not constitute part of, an offer or contract. Prospective purchaser(s) and lessees ought to seek their own professional advice.

2) All descriptions, dimensions, areas, reference to condition and if necessary permissions for use and occupation and their details are given in good faith and believed to be correct. Any intending purchaser(s) should not rely on them as statements or representations of fact but must satisfy themselves by inspection or otherwise as to the correctness of each of them.

3) No person in the employment of James Sellicks has any authority to make or give any representation or warrant, whether in relation to this property or these particulars, nor to enter into any contract relating to the property on behalf of the Vendors.

4) No responsibility can be accepted for any expenses incurred by any intending purchaser(s) in inspecting properties that have been sold, let or withdrawn.

Measures and Other Information

All measurements are approximate. Whilst we endeavour to make our sales particulars accurate and reliable, if there is any point which is of particular importance to you, please contact this office and we will be pleased to check the information for you, particularly if contemplating travelling some distance to view the property.

