

JAMES
SELICKS

BRIDGEWATER DRIVE

GREAT GLEN, LEICESTERSHIRE

GUIDE PRICE: £695,000



Tucked away at the head of a quiet cul-de-sac, this fantastic four-bedroom detached home offers generous accommodation, stylish interiors, and wraparound gardens.

The property already boasts an excellent layout, with planning permission in place to extend further above the garage, creating even more space if desired.

Four-bedroom detached home • Spacious L-shaped living kitchen with bi-fold doors • Elegant sitting room • Master bedroom with en-suite • Three further bedrooms • Family bathroom • Large driveway and double garage • solar panels • EV car charging point • Wraparound south-westerly gardens • Planning permission in place to extend above the garage • EPC - D

Location

Great Glen is a thriving south Leicestershire village offering amenities catering for most day-to-day needs and being particularly convenient to Leicester Grammar and Stonegate School within the village along with popular schools in the state sector. The area is surrounded by some of the County's finest rolling countryside with the market town of Market Harborough and the City of Leicester providing a wider range of facilities, professional quarters, and mainline rail access to London St. Pancras.

Accommodation

A contemporary front door opens into a welcoming hallway with useful storage and a cloakroom. Double doors lead into a wonderful sitting room, filled with natural light thanks to a bay window overlooking the garden, plus additional windows to the front and side. A cast iron log burner set on a slate hearth adds warmth and character, while French doors connect directly to the patio, making it ideal for entertaining.

The heart of the home is the superb open-plan living kitchen, designed with both style and practicality in mind. This versatile L-shaped space features a contemporary range of soft-close units topped with granite worktops, twin Bosch ovens, induction hob with extractor, built-in fridge/freezer and dishwasher, and a breakfast bar for casual dining. Bi-fold doors open out to the rear and side, seamlessly linking the kitchen to the garden, while underfloor heating ensures year-round comfort.

To the first floor, a spacious landing leads to four well-proportioned bedrooms. The principal suite enjoys dual-aspect windows, built-in wardrobes, and a modern en-suite shower room. Three further bedrooms each offer fitted storage, and they are served by the family bathroom, complete with a panelled bath and shower over.





Outside

A large block paved driveway provides ample off-road parking and leads to a double garage, fitted with power, lighting, sink with storage beneath, and housing the boiler and solar panel system. To the rear, beautifully landscaped gardens wrap around the home, offering a choice of patio and gravel entertaining areas, colourful flowerbeds, a wooden shed, vegetable plots, and fully fenced borders. With a sunny south-westerly aspect, this is the perfect setting for outdoor living.

Tenure: Freehold.

Listed Status: None.

Conservation Area: None.

Local Authority: Harborough District Council, **Tax Band:** F

Services: Offered to the market with all mains services and gas-fired central heating.

Broadband delivered to the property: Fibre, speed unknown.

Wayleaves, Rights of Way & Covenants: None our Clients are aware of.

Flooding issues in the last 5 years: None our Clients are aware of.

Accessibility: Two-storey property, no accessibility modifications made.

Planning issues: None our Clients are aware of.

Sustainability : thoughtfully integrated, with 23 solar panels, a 15kWh battery system, 9.5kWh inverter and a car charging point - all helping to keep running costs low.







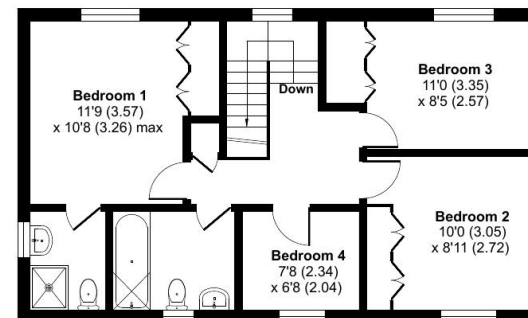
Bridgewater Drive, Great Glen, Leicester, LE8

Approximate Area = 1585 sq ft / 147.2 sq m

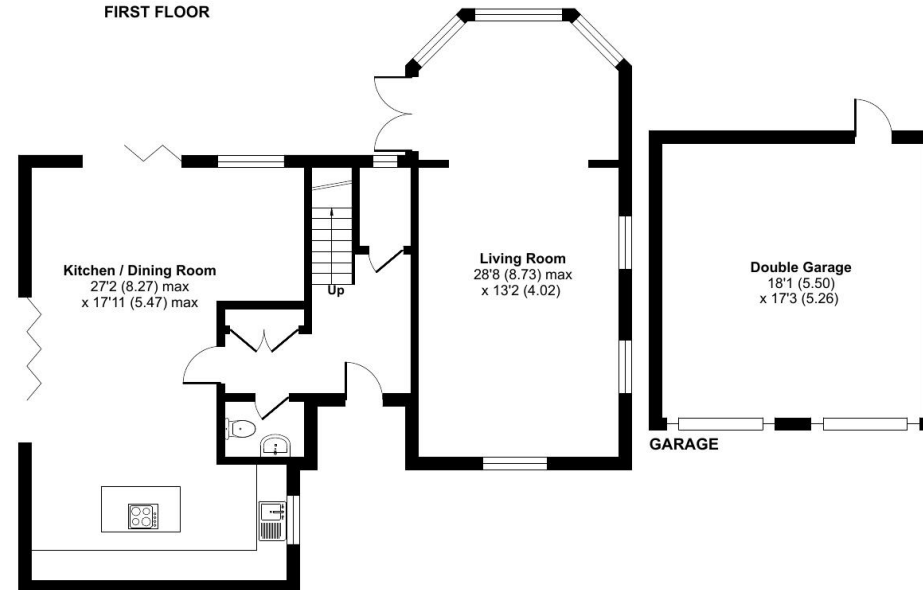
Garage = 311 sq ft / 28.8 sq m

Total = 1896 sq ft / 176 sq m

For identification only - Not to scale



FIRST FLOOR



GROUND FLOOR



Floor plan produced in accordance with RICS Property Measurement 2nd Edition, Incorporating International Property Measurement Standards (IPMS2 Residential). © nclhcom 2025. Produced for James Sellicks Estate Agents. REF: 1356515

Energy Efficiency Rating		
	Current	Potential
Very energy efficient - lower running costs		
(92-100) A		
(81-91) B		
(69-80) C		
(55-68) D		
(39-54) E		
(21-38) F		
(1-20) G		
Not energy efficient - higher running costs		
England & Wales		

EU Directive 2002/91/EC

Current: 61, Potential: 77

Market Harborough Office
13 Church Street
Market Harborough
LE16 7AA
01858 410008
mh@jamesseilicks.com

Leicester Office
01162 854 554

Oakham Office
01572 724437

jamesseilicks.com

Important Notice

James Sellicks for themselves and for the Vendors whose agent they are, give notice that:

1) The particulars are intended to give a fair and substantially correct overall description for the guidance of intending purchasers and do not constitute part of, an offer or contract. Prospective purchaser(s) and lessees ought to seek their own professional advice.

2) All descriptions, dimensions, areas, reference to condition and if necessary permissions for use and occupation and their details are given in good faith and believed to be correct. Any intending purchaser(s) should not rely on them as statements or representations of fact but must satisfy themselves by inspection or otherwise as to the correctness of each of them.

3) No person in the employment of James Sellicks has any authority to make or give any representation or warrant, whether in relation to this property or these particulars, nor to enter into any contract relating to the property on behalf of the Vendors.

4) No responsibility can be accepted for any expenses incurred by any intending purchaser(s) in inspecting properties that have been sold, let or withdrawn.

Measures and Other Information

All measurements are approximate. Whilst we endeavour to make our sales particulars accurate and reliable, if there is any point which is of particular importance to you, please contact this office and we will be pleased to check the information for you, particularly if contemplating travelling some distance to view the property.

