

STAPLETON LONG

Estate Agents & Chartered Surveyors

EST 1907



Norwood High Street, London, SE27 9JF

Lock Up Shop Unit

Prime Location

Available Now

£833 Per Month

TO VIEW THIS PROPERTY CALL: 020 8670 9111

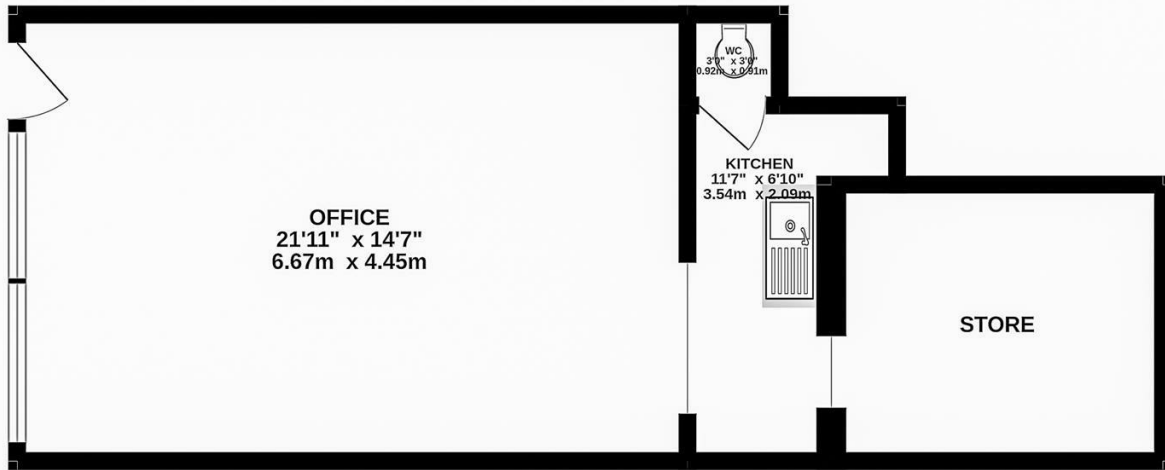
Email: norwood.sales@stapletonlong.co.uk

www.stapletonlong.co.uk

This lock up shop unit located on the ever popular Norwood High Street, comprising of main office/shop space, storage area and a wc. The property will require some updating and offers scope for improvement, ideal unit for a start up or potential storage unit.

Keys Held for immediate viewing

GROUND FLOOR
486 sq.ft. (45.2 sq.m.) approx.



TOTAL FLOOR AREA: 486 sq.ft. (45.2 sq.m.) approx.

Whilst every attempt has been made to ensure the accuracy of the floorplan contained here, measurements of doors, windows, rooms and any other items are approximate and no responsibility is taken for any error, omission or mis-statement. This plan is for illustrative purposes only and should be used as such by any prospective purchaser. The services, systems and appliances shown have not been tested and no guarantee as to their operability or efficiency can be given.

Energy Efficiency Rating		Current	Potential
Very energy efficient - lower running costs			
(92 plus) A			
(81-91) B			
(69-80) C			
(55-68) D			
(39-54) E			
(21-38) F			
(1-20) G			
Not energy efficient - higher running costs			
England & Wales	EU Directive 2002/91/EC		

Environmental Impact (CO ₂) Rating		Current	Potential
Very environmentally friendly - lower CO ₂ emissions			
(92 plus) A			
(81-91) B			
(69-80) C			
(55-68) D			
(39-54) E			
(21-38) F			
(1-20) G			
Not environmentally friendly - higher CO ₂ emissions			
England & Wales	EU Directive 2002/91/EC		



Please Note: All dimensions are approximate and are quoted for guidance only. Reference to appliances and/or services does not imply that they are necessarily in working order or fit for the purpose. We have been advised by the vendor of the freehold/leasehold status of the property and you should have this, together with any other information provided concerning the tenure of the property, checked by your solicitor. The position regarding fixtures and fittings and, where the property has been extended/converted, the position regarding planning approval and building regulation compliance, should also be checked by your solicitor. These particulars do not constitute or form part of an offer or contract nor may they be regarded as representations. All interest parties must themselves verify their accuracy.